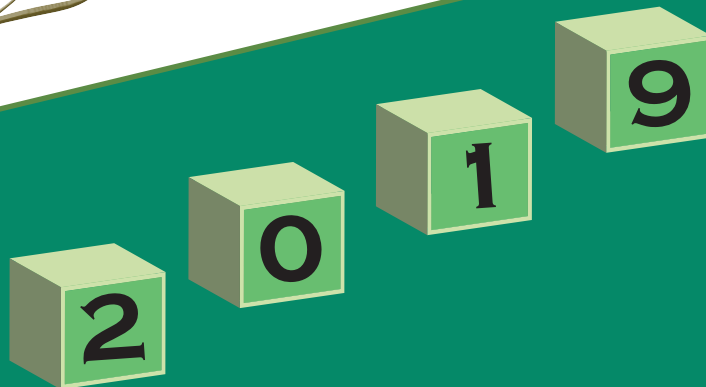




SOCIAL SECURITY BOARD

*Statistical
Abstract*



Issued October 2020

All Rights Reserved

© Social Security Board, 2019. This document, including text and data compilations, is the exclusive property of the Social Security Board, and is protected by Belize and International Copyright Laws. All content and all information herein have been produced by the Social Security Board for nonprofit, research, and educational use only. This document is not intended for direct or indirect commercial use. No part may be reproduced in any form, displayed in any form, or reused for any purpose or by any means without prior written authorization of the Social Security Board. A fee may accompany such written authorization. Written authorization to reproduce, display, or reuse the content and information herein shall be provided on the condition that the content and information shall not be modified in any way, and that a copyright notice accompany all copies or reproduction.

PREFACE

The 2019 *Statistical Abstract of the Social Security Board* is the 13th such publication by the Social Security Board (SSB) of Belize. This Abstract makes available to the public comprehensive statistical information aimed at increasing public awareness of the Social Security system and ensures the highest level of transparency. This publication covers information for the period 2015 to 2019 on selected SSB topics of public interest that cover all aspects of Insured Persons including: Registration, Contributions, Benefits, Non-contributory Pensions, Appeals, and Investments. Additional information on these topics may be obtained upon written request to SSB.

Furthermore, in SSB's quest to provide the most useful, relevant, timely and accurate data to its stakeholders, and to help promote the extension of social security coverage in line with the objectives and strategies of SSB and the International Social Security Association (ISSA), SSB has included two sections to its Statistical Abstract, namely, data on the number of migrant workers and self-employed. Migrant workers and self-employed were also included in this Abstract for monitoring and evaluation purposes, as well as in response to high demand for additional data from key stakeholders like the International Organization for Migration (IOM) Belize, Department of Immigration and Nationality Services, Labour Department and Belize Trade and Investment Development Service (Beltraide).

SSB extends its most sincere gratitude to the Statistical Institute of Belize and the Ministry of Health, who both contributed statistical information printed in this publication. SSB is also grateful to each staff member who assisted to make this Statistical Abstract a reality. A special thank you is extended to all members of the Policy & Research Department for their hard work and adherence to high standards in preparing and publishing this document. The input of users and the general public is appreciated as SSB strives for continuous quality improvement in the communication of information.

Any question and/or comment may be addressed to:

SOCIAL SECURITY BOARD - BELIZE

P.O. BOX 18

BLISS PARADE, BELMOPAN

CAYO DISTRICT

BELIZE, CENTRAL AMERICA

TEL: 501-822-2163

EMAIL: info@socialsecurity.org.bz

Visit us at: <http://www.socialsecurity.org.bz> for an Adobe version of this publication.

LIST OF ACRONYMS

AIP	Active Insured Persons
APV	Actuarial Present Value
BZ	Belize
BZ\$	Belize Dollars
CARICOM	Caribbean Community
CMS	Contribution Management System
Cont'd	Continued
DIP	Deceased Insured Person
DK/NS	Don't Know/Not Stated
EI	Employment Injury
GDP	Gross Domestic Product
GOB	Government of Belize
ILO	International Labour Organization
ISIC	International Standard Industrial Classification of all Economic Activities
MOH	Ministry of Health
N/A	Not Available or Not Applicable
NC	Natural Causes
NCP	Non-Contributory Pension
NCPs	Non-Contributory Pensioners
NHI	National Health Insurance
PCP	Primary Care Provider
p	Provisional
r	Revised
Rev.	Revision
SE	Self-Employed
SIB	Statistical Institute of Belize
SSB	Social Security Board
UNWTO	United Nations World Tourism Organization

Notes:

- Exchange rate: US\$1.00 equals BZ\$2.00.
- \$ refers to the Belize dollar unless otherwise stated
- 2019 figures are provisional and 2018 figures have been revised
- Totals in the tables are not always equal to the sum of its components due to rounding off.

GLOSSARY OF TERMS

TERM	DEFINITION
Active Business	A business that has made at least one weekly contribution during the year.
Active Employer	An employer who has made at least one weekly contribution during the year.
Active Self-Employed	A self-employed person who has made at least one weekly contribution during the year.
Active Insured Person	A person who has made at least one weekly contribution during the year.
Appeal	A request from an insured person to have his/her case be heard by an appeal tribunal since he/she is aggrieved by or dissatisfied with a decision made by the SSB regarding a benefit claimed.
Appeal Tribunal	A body that hears appeals arising from the decision of the Social Security Board to disallow a claim for a benefit. The Appeal Tribunal comprises an Attorney as Chairman, a representative of employers and a representative of employees. A Tribunal is any person or institution with the authority to judge, adjudicate on, or determine claims or disputes.
Beneficiary	A person entitled to a benefit or a person who is in receipt of a benefit.
Benefit	An advantage, privilege, right, or financial reimbursement (such as that made under an insurance policy, medical plan, or pension plan). For Social Security purposes, a benefit is payable in respect of Sickness, Maternity, Injury, Disablement, Invalidity, Retirement, Death, Funeral Grant or Survivors' Benefits where an insured person has met all the requirements.
Benefit Regulations	The Social Security (Benefit) Regulations, 1980. These are the rules that govern the entitlement to benefit and the sums payable to a beneficiary. A regulation is a principle, rule or law designed to control or govern conduct. In this document, regulations are made by the Minister of Finance under the Social Security Act, Chapter 44 of the Laws of Belize.
Board	A group of people (Board of Directors) chosen to govern the affairs of the Social Security Board that was established under section 28 of the Social Security Act.
Contribution	The money that employers and persons in insurable employment pay into the Social Security Fund. A contribution is payable under the Social Security Act.
Death Benefit	Periodical payments in respect of an injured person who dies as a result of work-related injury or disease. This benefit is paid to the survivors of the deceased insured person (i.e. widow, widower, children or parents).
Disablement Benefit	Periodical payments or a lump sum grant to an insured person who as a result of employment injury or disease sustains loss of physical or mental faculty amounting to not less than 1% degree of disability.
Earnings	Amount of money a person in insurable employment makes or the total compensation that an employee receives in exchange for the service they perform for their employer including overtime payments, acting allowances and responsibility allowances.
Employed Person	A person employed in insurable employment as defined by Section 3 (Social Security Act).
Employment Injury (EI)	An Injury arising out of and in the course of insurable employment.

TERM	DEFINITION
El Benefit Branch	The benefit branch from which benefits are paid to an insured person who suffers injury from an accident arising out of and in the course of employment. Benefits that are payable from the El Benefit Branch are: Injury, Disablement Grant, Disablement Pension, Death Benefit, Medical Care, Constant Attendance Allowance and Funeral Grant due to El.
Foreign National	Someone who is not a citizen of Belize, not a permanent resident of Belize, nor is a holder of a qualifying certificate.
Fund	The Social Security Fund established under Section 46 of the Social Security Act: contributions are paid into the fund; benefits and administrative costs are paid out of the fund. The excess is invested.
Funeral Grant	A benefit payment made to the person bearing funeral expenses in respect of an insured person who dies as a result of natural causes or work-related injury or disease and also on the death of a spouse or dependent child.
Industry	An organized economic activity or a branch of a commercial enterprise concerned with the output of a specified product or service. The categories of industries utilized by the SSB are aggregated by the International Standard Industrial Classification of all Economic Activities Revision 4 (ISIC Rev. 4).
Inflation	An increase in the overall price level of goods and services in a country.
Inflation Rate	The percentage change in the price level of goods and services in an economy over a period of time.
Insurable Employment	Any employment specified in Part 1 of the First Schedule of the Social Security Act. Insurable employment means working in a job for not less than 8 hours a week for another person.
Insured Person	A person who is registered with Social Security and has/had insurable employment.
Invalidity Benefit	Periodical payments or a lump sum payment to an insured person who is rendered permanently incapable of work otherwise than as a result of employment injury.
Investment	The laying out of money or capital with the expectation of a profit. That is, the use of capital to create more money, either through income producing vehicles or through more risk-oriented ventures designed to result in capital gains.
Investment Income	The income received in a particular year from investment loans, securities and other investments.
Labour Force	All persons aged 14 years and older who were engaged in any form of economic activity for at least one hour during the reference week, or who were willing and able to be engaged in producing goods and services.
Long Term Benefit Branch	The benefit branch or category where benefits are payable for: Retirement Pension, Retirement Grant, Invalidity Pension, Invalidity Grant, Survivors' Pension, Survivors' Grant, and Funeral Grant due to natural causes.
Maternity Allowance	Periodical payments made to an insured woman in the event of her pregnancy or confinement.
Maternity Grant	A lump sum payment paid to an insured woman or to an insured man on the occasion of his wife's confinement if his wife is not entitled to this grant.

TERM	DEFINITION
Medical Board	A panel that consists of two or more Medical Practitioners appointed by the SSB of whom one may be appointed as the Chairman. Medical Board members are appointed to render advice on disablement questions, for the purpose of establishing invalidity, and for advice on any other medical issue.
Medical Certificate	A certificate issued by a registered medical practitioner in Belize.
Medical Practitioner/ Medical Referee	A person registered under the Medical Practitioners Registration Act and includes any Government Medical Officer in Belize. Medical Practitioners/Referees render advice on disablement questions, for the purpose of establishing invalidity, and for advice on any other medical issue.
Migrant Worker	Someone who is gainfully occupied in employment in Belize who was not born in the country of Belize.
Nominal Rate	Return on investments that is unadjusted for inflation.
Non-Contributory Pension	A pension that is awarded to non-insured persons as a social assistance program by the Government of Belize to help alleviate poverty for women 65 years or older and men 67 years and older.
Primary Care Provider	An individual or an institution that provides preventive and curative health care services in a systematic way to individuals, families or communities.
Prescribed	Requirements designated by Social Security regulation for providing services and benefits.
Qualifying Certificate	A Certificate of Recognition of Caribbean Community Skills issued in accordance with the Caribbean Community (Free Movement of Skilled Persons) Act.
Real Rate	Return on investments that is adjusted for inflation.
Retirement Benefit	Periodical payments or a lump sum payment to an eligible insured person who a) has attained the age of sixty and is retired from insurable employment or b) who is at least sixty-five years (whether employed or unemployed) and c) has met the contribution requirements.
Self-Employed Person	A person gainfully occupied in Belize who is not a person employed under an employer and who is between the ages of 18 and 60 years.
Short Term Benefit Branch	The benefit branch or category includes Sickness Benefit, Maternity Allowance and Maternity Grant.
Sickness Benefit	Periodical payments or a lump sum payment to an insured person who is temporarily incapable of work otherwise than as a result of employment injury.
Survivors' Benefit	Periodical payments or a lump sum payment on behalf of an insured person who dies, otherwise than as a consequence of an employment injury. This is the money paid to the eligible dependents of a deceased insured person (i.e. spouses, dependent children or parents dependent on the insured person).
Total Contributions	Government of Belize contributions to the NHI Fund as well as those collected from employers, employees, voluntary and self-employed persons.
Voluntary Insured Person	An insured person who is not liable to pay contributions but chooses to make contribution payments under the Social Security Act. If an insured person stops working or becomes self-employed, that person can continue to pay contributions as a Voluntary Insured Person.

TABLE OF CONTENTS

PREFACE	I
LIST OF ACRONYMS	II
GLOSSARY OF TERMS	III
KEY INDICATORS	X

REGISTRATION

Table 1.1	Newly Registered Persons by Region of Birth and Registered Month, 2015 - 2019	2
Table 1.2	Newly Registered Persons by Region and Country of Birth, 2015 - 2019	3
Table 1.2 Cont'd.	Newly Registered Persons by Region and Country of Birth, 2015 - 2019	4
Table 1.3	Newly Registered Persons by Age Group and Sex, 2015 - 2019	5
Table 1.4	Newly Registered Belizeans by Birth (Place of Birth - Belize), Age Group and Sex, 2015 - 2019	6
Table 1.5	Newly Registered Non-Belizeans by Birth (Place of Birth - Not Belize), Age Group and Sex, 2015 - 2019	7
Table 1.6	Percentage of Newly Registered Persons in the Population by District, 2015 - 2019	8
Table 1.7	Social Security Registration Coverage of Live Births, 2015 - 2019	8
Table 1.8	Newly Registered Children Under One Year of Age Who Registered within a Year After Birth by Registered Year, Birth Year and Sex, 2015 - 2019	9
Table 1.9	Newly Registered Children Under One Year of Age Who Registered within a Year After Birth by Branch Registered, 2015 - 2019	10
Table 1.10	Percentage of Valid Card Holders in the Population by District, 2015 - 2019	10
Table 1.11	Valid Cards by Card Type, 2015 - 2019	11
Table 1.12	Newly Registered Employers by District, 2015 - 2019	11
Table 1.13	Newly Registered Businesses by District, 2015 - 2019	11
Table 1.14	Newly Registered Businesses by Economic Activity, 2015 - 2019	12
Table 1.15	Newly Registered Businesses by Economic Activity and District, 2019	13

CONTRIBUTIONS

	Schedule of Contributions Based on Weekly Insurable Earnings, July 1, 2003 - June 30, 2019	14
	Schedule of Contributions Based on Weekly Insurable Earnings, July 1, 2019 - January 5, 2020	14
Table 2.1	Total Contributions and Total Benefit Expenditure, 2015 - 2019	16
Chart 1	Total Contributions and Total Benefit Expenditure, 2015 - 2019	16
Chart 2	Contributions and Benefit Expenditure, 2015 - 2019	17
Table 2.2	Contributions Collected and its Percentage Distribution by District, 2015 - 2019	17
Table 2.3	Active Insured Persons and the Labour Force Participation Rates, 2015 - 2019	18
Chart 3	Labour Force, Employed Labour Force and Active Insured Persons, 2015 - 2019	18
Table 2.4	Active Insured Persons by District, Sex and Age Group, 2015 - 2019	19
Chart 4	Active Insured Persons by Month, 2015 - 2019	20
Table 2.5	Active Insured Persons and their Percentage Distribution by Industry, 2015 - 2019	21
Table 2.6	Active Insured Persons and their Percentage Distribution by Average Weekly Insurable Earnings, 2015 - 2018	22
Table 2.7	Active Insured Persons and their Percentage Distribution by Average Weekly Insurable Earnings, 2019	22

Table 2.8	Number of Active Insured Persons by Industry and Average Weekly Insurable Earnings, 2015 -----	23
Table 2.9	Percentage Distribution of Active Insured Persons by Industry and Average Weekly Insurable Earnings, 2015 -----	24
Table 2.10	Number of Active Insured Persons by Industry and Average Weekly Insurable Earnings, 2016-----	25
Table 2.11	Percentage Distribution of Active Insured Persons by Industry and Average Weekly Insurable Earnings, 2016 -----	26
Table 2.12	Number of Active Insured Persons by Industry and Average Weekly Insurable Earnings, 2017-----	27
Table 2.13	Percentage Distribution of Active Insured Persons by Industry and Average Weekly Insurable Earnings, 2017 -----	28
Table 2.14	Number of Active Insured Persons by Industry and Average Weekly Insurable Earnings, 2018r -----	29
Table 2.15	Percentage Distribution of Active Insured Persons by Industry and Average Weekly Insurable Earnings, 2018r -----	30
Table 2.16	Number of Active Insured Persons by Industry and Average Weekly Insurable Earnings, 2019p-----	31
Table 2.17	Percentage Distribution of Active Insured Persons by Industry and Average Weekly Insurable Earnings, 2019p-----	32
Table 2.18	Active Insured Persons within the Tourism Industry by Year and District, 2015 - 2019p -----	33
Table 2.19	Active Male Insured Persons within the Tourism Industry by Year and District, 2015 - 2019p-----	34
Table 2.20	Active Female Insured Persons within the Tourism Industry by Year and District, 2015 - 2019p -----	35
Table 2.21A	Active Insured Persons within the Tourism Industry by Employment Area, Nationality and Sex, 2015 - 2017 -----	36
Table 2.21B	Active Insured Persons within the Tourism Industry by Employment Area, Nationality and Sex, 2018 - 2019-----	37
Table 2.22	Number of Active Businesses within the Tourism Industry by Year and Business Area, 2015 - 2019p ----	38
Table 2.23	Percentage of Tourism Active Insured Persons to Total Active Insured Persons by District and Year, 2015 - 2019-----	39
Chart 5	Active Insured Persons in the Tourism Industry, 2015 - 2019-----	40
Table 2.24	Active Employers by District, 2015 - 2019-----	40
Table 2.25	Active Businesses by Industry, 2015 - 2019 -----	41
Table 2.26	Active Businesses and its Percentage Distribution by District, 2015 - 2019-----	42
Table 2.27	Active Businesses by Number of Employees and Business Type, 2015 - 2019-----	42

BENEFITS ----- 43

Table 3.1	Benefits Expenditure by Branch/Benefit, 2015 - 2019 -----	44
Table 3.2	New Claims Allowed by Branch/Benefit, 2015 - 2019-----	45
Table 3.3	Benefit Recipients by Branch/Benefit, 2015 - 2019-----	45
Table 3.4	Total Number of Sickness Benefit Days Claimed within each Sickness Benefit Days Group, 2015 - 2019--	46
Table 3.5	Mean Benefit Payment by Sickness Benefit Days Group, 2015 - 2019 -----	47
Table 3.6	Sickness Benefit by Selected Characteristics, 2015 - 2019 -----	48
Table 3.7	Sickness Benefit Claims Paid by Industry, 2015 - 2019-----	49
Table 3.8	Maternity Allowance by Selected Characteristics, 2015 - 2019 -----	50
Table 3.9	Maternity Grants Paid by Age Group and Sex, 2015 - 2019 -----	51
Table 3.10	Pensions by Recipients at Year End and Expenditure, 2015 - 2019-----	52
Table 3.11	Retirement Pensions Awarded During the Year by Age, Sex and Mean Annual Payment, 2015 - 2019 ---	53
Table 3.12	Retirement Grants Awarded by Age, Sex and Mean Annual Payment, 2015 - 2019-----	54

Table 3.13	1Invalidity Pensioners at Year End by Age Group and Sex, 2015 - 2019 -----	55
Table 3.14	1Spouses Receiving Survivors' Pension at Year End by Sex and Mean Annual Payment, 2015 - 2019-----	56
Table 3.15	Children Awarded Survivors' Pension During the Year by Age Group, Sex and Mean Annual Payment, 2015 - 2019 -----	56
Table 3.16	1Children Receiving Survivors' Pension at Year End by Age Group, Sex and Mean Annual Payment, 2015 - 2019 -----	57
Table 3.17	1Dead Insured Persons by Number of Surviving Orphans and Year, 2015 - 2019-----	58
Table 3.18	1Dead Insured Persons by Number of Surviving Spouses and Parents, Sex and Year, 2015 - 2019-----	58
Table 3.19	Survivors' Grants Awarded to Beneficiaries by Age Group, Sex and Mean Annual Payment, 2015 - 2019 -----	59
Table 3.20	Disablement Pensions Awarded During the Year by Degree of Disability in Percent, Sex and Mean Annual Payment, 2015 - 2019-----	60
Table 3.21	1Disablement Pensions at Year End by Selected Characteristics, 2015 - 2019-----	61
Table 3.22	Disablement Grants Awarded by Degree of Disability in Percent, Sex and Mean Annual Payment, 2015 - 2019-----	62
Table 3.23	Survivors' Benefit Awarded to Children for Death Benefit During the Year by Sex and Mean Annual Payment (Death due to Employment Injury), 2015 - 2019-----	62
Table 3.24	1Survivors' Benefit at Year End for Children Receiving Death Benefit by Age Group, Sex and Mean Annual Payment (Death due to Employment Injury), 2015 - 2019-----	63
Table 3.25	1Survivors' Benefit at Year End for Spouses Receiving Death Benefit by Sex and Mean Annual Payment (Death due to Employment Injury), 2015 - 2019-----	63
Table 3.26	Employment Injury by Cause and Nature of Injury, 2015 - 2019-----	64
Table 3.27	Employment Injury by Industry, 2015 - 2019-----	65
Table 3.28	Number of Non-Contributory Pensioners by District and Sex, 2015 - 2019-----	66
Table 3.29	Total Expenditure, Non-Contributory Pensioners by Branch, 2015 - 2019-----	66
Table 3.30	Number of Non-Contributory Pensioners by Age Group, Year and District, 2015 - 2019-----	67
Table 3.31	Appeals Heard by an Appeal Tribunal by Branch Office, Benefit and Outcome of Appeal, 2015 - 2019---	68

INVESTMENTS----- 69

Table 4.1	Investment Portfolio Allocations by Sector as at December 31, 2015 - 2019-----	70
Table 4.2	Investment Indicators, 2015 - 2019-----	70

SELF-EMPLOYED PERSONS ----- 71

Table 5.1	Self-Employed by Selected Characteristics, 2015 - 2019-----	72
Table 5.2	Newly Registered Self-Employed by District, 2015 - 2019-----	72
Table 5.3	Active Insured Self-Employed by Selected Characteristics, 2015 - 2019-----	73
Table 5.4	Male Active Insured Self-Employed by Selected Characteristics, 2015 - 2019-----	74
Table 5.5	Female Active Insured Self-Employed by Selected Characteristics, 2015 - 2019-----	75
Table 5.6	Self-Employed Contributions Collected and their Percentage Distribution by Average Weekly Insurable Earnings, 2015 - 2019-----	76
Table 5.7	Number of Benefits Awarded to Self-Employed Insured Persons During the Year by Branch/Benefit, 2015 - 2019-----	76
Table 5.8	Benefits Expenditure Paid to Self-Employed Insured Persons by Branch/Benefit, 2015 - 2019-----	77

Table 5.9	Ratio of Sickness Benefit Cases Paid to Active Insured Persons by Selected Characteristics, 2015 - 2019	77
-----------	--	----

MIGRANT WORKERS ----- 78

Table 6.1	Migrant Workers by Selected Characteristics, 2015 - 2019	79
Table 6.2	Number of Migrant Workers by Region and Nationality, 2015 - 2019	80
Table 6.2 Cont'd.	Number of Migrant Workers by Region and Nationality, 2015 - 2019	81
Table 6.3	Number of Male Migrant Workers by Region and Nationality, 2015 - 2019	82
Table 6.3 Cont'd.	Number of Male Migrant Workers by Region and Nationality, 2015 - 2019	83
Table 6.4	Number of Female Migrant Workers by Region and Nationality, 2015 - 2019	84
Table 6.4 Cont'd.	Number of Female Migrant Workers by Region and Nationality, 2015 - 2019	85
Table 6.5	Number of CARICOM Migrant Workers by Sex and Nationality, 2015 - 2019	86
Table 6.6	Active Insured Migrant Workers by Selected Characteristics, 2015 - 2019	87
Table 6.7	Male Active Insured Migrant Workers by Selected Characteristics, 2015 - 2019	87
Table 6.8	Female Active Insured Migrant Workers by Selected Characteristics, 2015 - 2019	88
Table 6.9	Active Insured Migrant Workers and their Percentage Distribution by Industry, 2015 - 2019	89
Table 6.10	Active Male Insured Migrant Workers and their Percentage Distribution by Industry, 2015 - 2019	90
Table 6.11	Active Female Insured Migrant Workers and their Percentage Distribution by Industry, 2015 - 2019	91
Table 6.12	Active Insured Migrant Workers and their Percentage Distribution by Average Weekly Insurable Earnings, 2015 - 2019	92
Table 6.13	Number of Benefits Awarded to Migrant Workers by Branch/Benefit, 2015 - 2019	92
Table 6.14	Benefits Expenditure Paid to Migrant Workers by Branch/Benefit, 2015 - 2019	93
Table 6.15	Ratio of Sickness Benefit Cases Paid to Migrant Workers by Selected Characteristics, 2015 - 2019	93

KEY INDICATORS

Table 0.1
Key Indicators for Selected Years,
2015 - 2019
(BZ\$)

Key Indicators	2015	2016	2017	2018 ^r	2019 ^p	2018 - 2019 Change Quantity Percentage	
Registration							
Population of Belize	368,310	377,679	385,766	395,882	406,262	10,380	2.6
Population with a Valid SSB Card	322,223	302,857	306,079	306,891	311,452	4,561	1.5
Percentage of SSB Card Holders in the Population	87.5%	80.1%	79.3%	77.5%	76.7%	(0.9%)	(1.1)
Newly Registered Population	11,950	10,767	10,119	9,902	9,601	(301)	(3.0)
Newly Registered Employers	1,462	1,463	1,424	1,562	1,605	43	2.8
Newly Registered Businesses	1,640	1,780	1,791	1,967	2,102	135	6.9
Newly Registered Self Employed	404	521	451	515	590	75	14.6
Newly Registered Migrant Workers	3,125	2,384	2,398	1,971	2,346	375	19.0
Contributions							
Employers and Employees Contributions to the SSB Fund	\$77,377,011	\$80,091,685	\$82,610,532	\$87,043,419	\$100,180,515	\$13,137,096	15.1
Active Insured Persons	102,456	104,321	105,846	109,071	110,937	1,866	1.7
New Active Insured Persons	32,862	29,289	26,217	27,402	27,184	(218)	(0.8)
Percentage of Employed Persons Actively Insured	74.2%	72.3%	70.5%	69.9%	67.3%	(2.6%)	(3.8)
Active Employers	11,069	11,327	11,552	11,750	11,940	190	1.6
Active Businesses	11,849	12,238	12,479	12,697	12,914	217	1.7
Active Self Employed	1,195	1,390	1,460	1,564	1,746	182	11.6
Active Migrant Workers	18,226	18,122	17,944	17,939	17,726	(213)	(1.2)
Benefits							
Benefit Payment Less Benefit Payments for NHI	\$59,255,405	\$63,845,496	\$70,502,031	\$74,144,554	\$81,099,490	\$6,954,937	9.4
Total Claims Processed	64,548	63,934	78,042	69,914	70,611	697	1.0
Total New Allowed Claims	40,091	40,325	48,486	42,649	43,772	1,123	2.6
Benefit Recipients	41,412	41,486	47,680	44,374	45,602	1,228	2.8
Retired Contributory Pensioners	5,285	5,797	6,312	6,957	7,685	728	10.5
Contributory Pensioners	9,055	9,834	10,509	11,278	12,038	760	6.7
Employment Injury Cases Allowed	1,923	1,841	1,789	1,745	1,492	(253)	(14.5)

Continued on next page . . .

Table 0.1
Key Indicators for Selected Years Continued,
2015 - 2019
(BZ\$)

<i>Key Indicators</i>	<i>2015</i>	<i>2016</i>	<i>2017</i>	<i>2018r</i>	<i>2019p</i>	<i>2018 - 2019 Change</i> <i>Quantity Percentage</i>	
Non-Contributory Pensioners	2,513	2,214	2,018	1,863	1,575	(288)	(15.5)
Payments in Non-Contributory Pensions	\$2,754,239	\$2,504,904	\$2,297,370	\$2,009,387	\$1,821,844	(\$187,543)	(9.3)
Appeals	46	39	44	48	80	32	66.7
National Health Insurance							
GOB Contributions to the NHI Fund	\$17,025,004	\$17,000,004	\$17,000,004	\$17,600,004	\$17,950,001	\$349,997	2.0
Benefit Payments for NHI	\$17,936,941	\$16,141,065	\$15,822,665	\$16,305,209	\$16,706,465	\$401,256	2.5
NHI Operating Expenses	\$757,427	\$787,397	\$931,218	\$957,733	\$1,012,566	\$54,833	5.7
NHI Administrative Expenditure	\$729,597	\$744,554	\$885,962	\$908,962	\$956,742	\$47,780	5.3
NHI Expenditure (Operating Expenses and Benefit Payments)	\$18,694,368	\$16,928,462	\$16,753,883	\$17,262,942	\$17,719,030	\$456,088	2.6
Total NHI Membership	97,969	100,794	113,200	128,711	128,119	(592)	(0.5)
NHI Membership in Southside Belize City	49,401	49,517	47,995	53,210	52,935	(275)	(0.5)
NHI Membership in the Southern Region	47,701	47,701	50,892	55,655	55,353	(302)	(0.5)
NHI Membership in the Northern Region	867	3,576	14,313	19,846	19,831	(15)	(0.1)
Investments							
Total Investments as at December 31	\$440,260,035	\$424,983,429	\$439,485,510	\$451,805,581	\$465,638,458	\$13,832,877	3.1
Net Investment Income	\$24,791,972	\$26,268,696	\$23,888,585	\$20,453,617	\$20,880,617	\$427,000	2.1
Nominal Rate of Return on Investments (%)	6.0	6.3	5.7	4.7	4.7	(0.0)	(0.8)
Real Rate of Return on Investments (%)	7.0	5.5	4.5	4.4	4.4	0.1	1.5
Financial Data Including GOB Contributions to the NHI Fund and NHI Expenditures							
Total Income	\$120,276,879	\$123,915,010	\$124,583,957	\$126,359,863	\$123,083,811	(\$3,276,052)	(2.6)
Total Contributions	\$94,402,015	\$97,091,689	\$99,610,536	\$104,643,423	\$118,130,516	\$13,487,093	12.9
Total Benefit Payments	\$77,192,346	\$79,986,561	\$86,324,696	\$90,449,763	\$97,805,955	\$7,356,192	8.1
Total Operating Expenses	\$20,082,380	\$20,525,964	\$23,722,654	\$23,373,369	\$22,216,370	(\$1,156,999)	(5.0)
Administration Expenses	\$18,853,531	\$19,278,335	\$22,441,977	\$22,028,413	\$21,980,957	(\$47,456)	(0.2)
Total Expenditure	\$97,274,726	\$100,512,525	\$110,047,350	\$113,823,132	\$105,144,188	(\$8,678,944)	(7.6)
Excess of Income Over Expenditure	\$23,002,153	\$23,402,485	\$14,536,607	\$12,536,731	\$17,939,623	\$5,402,892	43.1

Continued on next page . . .

Table 0.1
Key Indicators for Selected Years Continued,
2015 - 2019
(BZ\$)

<i>Key Indicators</i>	<i>2015</i>	<i>2016</i>	<i>2017</i>	<i>2018r</i>	<i>2019p</i>	<i>2018 - 2019 Change</i>	<i>Quantity Percentage</i>
Financial Data Excluding GOB Contributions to the NHI Fund and NHI Expenditures							
Total Income	\$103,251,875	\$106,915,006	\$107,583,953	\$108,759,859	\$105,133,810	(\$3,626,049)	(3.3)
Total Operating Expenses	\$19,324,953	\$19,738,567	\$22,791,436	\$22,415,636	\$21,203,804	(\$1,211,832)	(5.4)
Administration Expenses	\$18,123,934	\$18,533,781	\$21,556,015	\$21,119,451	\$21,024,215	(\$95,236)	(0.5)
Total Expenditure	\$78,580,358	\$83,584,063	\$93,293,467	\$96,560,190	\$87,425,157	(\$9,135,032)	(9.5)
Excess of Income Over Expenditure	\$24,671,517	\$23,330,943	\$14,290,486	\$12,199,669	\$17,708,653	\$5,508,984	45.2
Total Expenditure to Total Income (Efficiency Ratio)	0.76	0.78	0.87	0.89	0.83	(0.1)	(6.3)
Total Expenditure to Contribution Income	1.02	1.04	1.13	1.11	0.87	(0.2)	(21.3)
Benefit Payment as a % of Contribution Income	76.6%	79.7%	85.3%	85.2%	81.0%	(4.2%)	(5.0)
Operating Expenses to Contribution Income Ratio	0.25	0.25	0.28	0.26	0.21	(0.0)	(17.8)
Operating Expenses to Total Income Ratio	0.19	0.18	0.21	0.21	0.20	(0.0)	(2.1)
Administration Expenses to Contribution Income	0.23	0.23	0.26	0.24	0.21	(0.0)	(13.5)
Administration Expenses to Total Income	0.18	0.17	0.20	0.19	0.20	0.0	3.0
Other							
GDP at Current Market Prices*	\$3,525,000,877	\$3,613,292,518	\$3,725,229,598	\$3,850,000,000	\$3,759,227,200	(\$90,772,800)	(2.4)
Total Assets	\$501,292,442	\$508,576,234	\$526,751,943	\$542,642,652	\$559,786,293	\$17,143,642	3.2
Reserves at End of Year	\$491,611,255	\$498,940,733	\$512,947,651	\$525,001,058	\$541,870,098	\$16,869,040	3.2
Reserves as a % of GDP	13.9%	13.8%	13.8%	13.6%	14.4%	\$0	5.7
Reserves to Expenditure Ratio	6.26	5.97	5.50	5.44	6.20	0.8	14.0
Investment as a % of Reserves	89.6%	85.2%	86.6%	86.1%	85.9%	(0.1%)	(0.1)
Dependency Ratio (Number of Contributors per Pensioner)	11.31	10.61	10.07	9.67	9.22	(0.5)	(4.7)
Demographic Ratio (Contributory Pensioners per Active Insured Person)	0.09	0.09	0.10	0.10	0.11	0.0	4.9
Customer Satisfaction Rate	N/A	94.9%	N/A	N/A	N/A	N/A	N/A

Source: Social Security Board

Notes: Difference in totals in the Quantity Change section may not be exact due to rounding.

*The 2019 GDP at Current Market prices figure is an unofficial estimate obtained from the World Bank website. <https://data.worldbank.org/indicator/NY.GDP.MKTP.CD?locations=BZ>.

N/A - Not Available

REGISTRATION

This section presents statistics on registration of all eligible persons in Belize. Indicators include the registration of the general population, businesses, employers and the self-employed. The principal source of the data is the Social Security Board's (SSB) Registration databases. Secondary sources of the data include the Statistical Institute of Belize (SIB) and the Ministry of Health (MOH).

Registration – The Social Security Act, Chapter 44 of the Laws of Belize Revised Edition 2000 - 2003, provides for the mandatory registration of all nationals, registered aliens, holders of work permits and their dependents, regardless of their age. Each person who registers with the SSB is allotted a Social Security number. Minors (i.e. Dependent children of Belizeans, Permanent Residents of Belize, and CSME certificate and stamp holders with indefinite period of stay) under the age of 14 years will have cards issued with the expiration date as the day before their 14th birthday and marked "NOT VALID FOR EMPLOYMENT". In addition, effective 2019, for persons 14 years and older who are Belizeans, Permanent Residents of Belize, and CARICOM Single Market & Economy (CSME) certificate and stamp holders with indefinite period of stay, there will be no expiration on Social Security Registration Cards issued and these cards will be valid for employment. Furthermore, also effective 2019, Foreign Nationals who are 14 years and older will be issued Social Security Registration Cards that are valid for employment with the same expiration dates as their valid work permits. Registration cards of the Dependents of Foreign Nationals, including holders of student permits, will be marked "NOT VALID FOR EMPLOYMENT" since these foreign nationals are not allowed to work in Belize.

Employer and Business – The term employer is used to indicate that such entity or person is registered and has an account with the SSB for payment of contributions on behalf of employees. An employer may have more than one business. Each business is given a unique business number, which is a sub-account of the existing employer. Therefore, employers can only have one employer number but more than one business number.

Population – The figures used for the Belize population are derived from the census (conducted every 10 years) and mid-year estimates which are sourced from SIB. Data on live births are provided by MOH. These figures are used to compute the number of children registered within the year of birth.

Table 1.1
Newly Registered Persons by Region of Birth and Registered Month,
2015 - 2019

Selected Characteristics	Registered Year				
	2015	2016	2017	2018	2019
Total	11,950	10,767	10,119	9,902	9,601
Region of Birth					
Africa	38	36	22	23	44
Asia	220	308	320	194	165
Caribbean	69	47	76	73	64
Central America	11,044	9,746	9,127	9,217	8,817
Europe	70	83	90	41	77
Middle East	17	18	16	11	21
Northern America	459	492	434	320	370
Oceania	4	5	4	2	1
South America	29	32	30	21	42
Registered Month					
January	885	940	851	847	772
February	971	982	823	752	835
March	1,089	869	984	903	939
April	1,072	948	779	917	891
May	1,143	915	992	910	957
June	1,045	968	1,015	916	847
July	1,142	973	930	765	1,012
August	1,013	932	1,024	1,045	898
September	925	762	771	678	686
October	994	879	670	834	783
November	975	934	673	707	396
December	696	665	607	628	585

Source: Social Security Board and Statistical Institute of Belize

Note: Region is classified based on the methodology used by United Nations Statistics website for countries' regional and sub-regional standard codes for statistical use.

Table 1.2
Newly Registered Persons by Region and Country of Birth,
2015 - 2019

Region and Country of Birth	Registered Year				
	2015	2016	2017	2018	2019
Grand Total	11,950	10,767	10,119	9,902	9,601
Sub Total	11,601	10,317	9,667	9,631	9,293
Central America	11,044	9,746	9,127	9,217	8,817
Belize	8,825	8,383	7,721	7,931	7,255
Guatemala	1,317	836	753	666	771
Honduras	371	226	222	219	289
El Salvador	272	143	200	189	244
Mexico	154	124	201	159	188
Nicaragua	95	24	25	49	61
Costa Rica	6	7	2	1	6
Panama	4	3	3	3	3
North America	459	492	434	320	370
United States of America	402	438	386	274	335
Canada	57	54	48	46	35
Bermuda	0	0	0	0	0
Caribbean	69	47	76	73	64
Cuba	23	16	23	20	23
Jamaica	20	8	16	14	11
Trinidad and Tobago	3	0	6	11	11
Haiti	2	5	14	6	7
Guyana	3	4	5	9	5
Dominican Republic	10	7	6	2	2
Other	8	7	6	11	5
South America	29	32	30	21	42
Venezuela	3	8	13	9	13
Colombia	11	14	4	5	10
Brazil	2	3	7	2	7
Bolivia	5	0	2	2	3
Argentina	3	2	1	1	2
Chile	0	0	0	0	2
Uruguay	1	0	0	0	2
Other	4	5	3	2	3

Source: Social Security Board

Notes: Region is classified based on the methodology used by United Nations Statistics website for countries' regional and sub- regional standard codes for statistical use.

Other Category includes countries where there were less than 2 newly registered persons in 2019.

Table 1.2 Cont'd
Newly Registered Persons by Region and Country of Birth,
2015 - 2019

Region and Country of Birth	Registered Year				
	2015	2016	2017	2018	2019
Grand Total	11,950	10,767	10,119	9,902	9,601
Sub Total	349	450	452	271	308
Asia	220	308	320	194	165
China (Mainland)	114	177	207	112	66
India	43	49	53	36	54
Bangladesh	23	14	13	23	19
Taiwan	20	27	20	9	9
China	0	0	0	0	5
Pakistan	2	2	2	1	4
Philippines	7	28	17	9	3
Other	11	11	8	4	5
Europe	70	83	90	41	77
United Kingdom	17	29	19	14	33
France	3	8	6	3	10
Germany (East)	7	7	9	6	8
Italy (Including Sicily)	8	1	6	4	5
Turkey	3	10	5	5	5
Netherlands	0	8	5	1	2
Poland	1	0	1	0	2
Russia (Formerly U.S.S.R.)	3	0	1	1	2
Ukraine	2	0	1	0	2
Other	26	20	37	7	8
Africa	38	36	22	23	44
South Africa, Union of	11	11	10	11	15
Nigeria	23	10	2	4	12
Zimbabwe	2	4	4	1	5
Congo (Democratic Republic of the Congo)	0	1	0	0	2
Egypt	0	0	0	0	2
Ghana	1	0	0	2	2
Other	1	10	6	5	6
Middle East	17	18	16	11	21
Lebanon	11	14	10	6	15
Jordan	0	0	0	1	5
Other	6	4	6	4	1
Oceania	4	5	4	2	1
Australia	1	0	1	2	1
Fiji	3	5	3	0	0

Source: Social Security Board

Notes: Region is classified based on the methodology used by United Nations Statistics website for countries' regional and sub-regional standard codes for statistical use.

Other Category includes countries where there were less than 2 newly registered persons in 2019.

Table 1.3
Newly Registered Persons by Age Group and Sex,
2015 - 2019

Age Group	Registered Year				
	2015	2016	2017	2018	2019
Total	11,950	10,767	10,119	9,902	9,601
0 - 4	4,942	4,867	4,704	4,824	4,631
5 - 9	1,326	1,196	1,089	1,167	868
10 - 14	1,359	1,100	938	931	767
15 - 19	972	961	791	777	752
20 - 24	860	655	650	559	599
25 - 29	502	394	438	345	444
30 - 34	457	328	305	252	321
35 - 39	336	251	252	214	299
40 - 44	276	210	220	195	227
45 - 49	235	207	184	155	175
50 - 54	192	170	159	135	141
55 - 59	167	149	135	123	128
60+	326	279	254	225	249
Male	6,540	5,825	5,466	5,202	5,162
0 - 4	2,512	2,504	2,432	2,419	2,403
5 - 9	652	630	543	598	443
10 - 14	659	539	488	461	403
15 - 19	596	563	471	443	454
20 - 24	593	430	427	363	399
25 - 29	335	238	276	197	263
30 - 34	283	190	182	142	168
35 - 39	206	145	137	124	149
40 - 44	188	136	120	109	127
45 - 49	138	127	117	83	80
50 - 54	109	92	76	86	78
55 - 59	98	87	74	65	74
60+	171	144	123	112	121
Female	5,410	4,942	4,653	4,700	4,439
0 - 4	2,430	2,363	2,272	2,405	2,228
5 - 9	674	566	546	569	425
10 - 14	700	561	450	470	364
15 - 19	376	398	320	334	298
20 - 24	267	225	223	196	200
25 - 29	167	156	162	148	181
30 - 34	174	138	123	110	153
35 - 39	130	106	115	90	150
40 - 44	88	74	100	86	100
45 - 49	97	80	67	72	95
50 - 54	83	78	83	49	63
55 - 59	69	62	61	58	54
60+	155	135	131	113	128

Source: Social Security Board

Table 1.4
Newly Registered Belizeans by Birth (Place of Birth - Belize), Age Group and Sex,
2015 - 2019

Age Group	Registered Year				
	2015	2016	2017	2018	2019
Total	8,825	8,383	7,721	7,931	7,255
0 - 4	4,849	4,754	4,538	4,673	4,499
5 - 9	1,246	1,110	1,005	1,092	784
10 - 14	1,196	946	809	828	647
15 - 19	611	667	580	556	519
20 - 24	228	218	207	197	171
25 - 29	70	86	78	77	95
30 - 34	87	74	56	58	78
35 - 39	53	82	51	67	83
40 - 44	65	62	68	64	76
45 - 49	76	84	51	53	53
50 - 54	72	60	61	69	62
55 - 59	88	67	67	62	52
60+	184	173	150	135	136
Male	4,433	4,315	3,959	3,988	3,725
0 - 4	2,464	2,454	2,347	2,341	2,332
5 - 9	614	585	497	565	395
10 - 14	585	473	426	403	339
15 - 19	335	345	324	293	293
20 - 24	114	114	115	119	88
25 - 29	46	43	40	30	46
30 - 34	37	34	27	30	40
35 - 39	22	44	19	31	36
40 - 44	33	38	28	28	33
45 - 49	33	44	29	23	17
50 - 54	27	27	19	40	26
55 - 59	39	32	31	27	29
60+	84	82	57	58	51
Female	4,392	4,068	3,762	3,943	3,530
0 - 4	2,385	2,300	2,191	2,332	2,167
5 - 9	632	525	508	527	389
10 - 14	611	473	383	425	308
15 - 19	276	322	256	263	226
20 - 24	114	104	92	78	83
25 - 29	24	43	38	47	49
30 - 34	50	40	29	28	38
35 - 39	31	38	32	36	47
40 - 44	32	24	40	36	43
45 - 49	43	40	22	30	36
50 - 54	45	33	42	29	36
55 - 59	49	35	36	35	23
60+	100	91	93	77	85

Source: Social Security Board

Table 1.5
Newly Registered Non-Belizeans by Birth (Place of Birth - Not Belize), Age Group and Sex,
2015 - 2019

Age Group	Registered Year				
	2015	2016	2017	2018	2019
Total	3,125	2,384	2,398	1,971	2,346
0 - 4	93	113	166	151	132
5 - 9	80	86	84	75	84
10 - 14	163	154	129	103	120
15 - 19	361	294	211	221	233
20 - 24	632	437	443	362	428
25 - 29	432	308	360	268	349
30 - 34	370	254	249	194	243
35 - 39	283	169	201	147	216
40 - 44	211	148	152	131	151
45 - 49	159	123	133	102	122
50 - 54	120	110	98	66	79
55 - 59	79	82	68	61	76
60+	142	106	104	90	113
Male	2,107	1,510	1,507	1,214	1,437
0 - 4	48	50	85	78	71
5 - 9	38	45	46	33	48
10 - 14	74	66	62	58	64
15 - 19	261	218	147	150	161
20 - 24	479	316	312	244	311
25 - 29	289	195	236	167	217
30 - 34	246	156	155	112	128
35 - 39	184	101	118	93	113
40 - 44	155	98	92	81	94
45 - 49	105	83	88	60	63
50 - 54	82	65	57	46	52
55 - 59	59	55	43	38	45
60+	87	62	66	54	70
Female	1,018	874	891	757	909
0 - 4	45	63	81	73	61
5 - 9	42	41	38	42	36
10 - 14	89	88	67	45	56
15 - 19	100	76	64	71	72
20 - 24	153	121	131	118	117
25 - 29	143	113	124	101	132
30 - 34	124	98	94	82	115
35 - 39	99	68	83	54	103
40 - 44	56	50	60	50	57
45 - 49	54	40	45	42	59
50 - 54	38	45	41	20	27
55 - 59	20	27	25	23	31
60+	55	44	38	36	43

Source: Social Security Board

Table 1.6
Percentage of Newly Registered Persons in the Population by District,
2015 - 2019

District	Registered Year				
	2015	2016	2017	2018	2019
Newly Registered	11,950	10,767	10,119	9,902	9,601
Corozal	1,402	1,216	1,012	974	804
Orange Walk	1,488	1,554	1,584	1,593	1,525
Belize	3,060	2,919	2,903	2,622	2,723
Cayo	3,255	2,907	2,852	2,793	2,613
Stann Creek	2,152	1,691	1,390	1,322	1,527
Toledo	593	480	378	598	409
Population	368,310	377,969	385,766	395,882	406,262
Corozal	45,530	46,472	47,231	48,217	49,229
Orange Walk	49,466	50,208	50,807	51,583	52,380
Belize	110,645	113,878	116,489	119,876	123,351
Cayo	87,876	90,579	92,760	95,591	98,495
Stann Creek	39,865	41,032	41,975	43,197	44,451
Toledo	34,928	35,800	36,504	37,418	38,356
Percentage of Newly Registered	3.2	2.8	2.6	2.5	2.4
Corozal	3.1	2.6	2.1	2.0	1.6
Orange Walk	3.0	3.1	3.1	3.1	2.9
Belize	2.8	2.6	2.5	2.2	2.2
Cayo	3.7	3.2	3.1	2.9	2.7
Stann Creek	5.4	4.1	3.3	3.1	3.4
Toledo	1.7	1.3	1.0	1.6	1.1

Source: Social Security Board and Statistical Institute of Belize

Note: Population Data are from mid year estimates based on intercensal growth rates and the Labour Force Surveys.

Table 1.7
Social Security Registration Coverage of Live Births,
2015 - 2019

	Year				
	2015	2016	2017	2018r	2019p
Live Births	7,448	7,216	7,242	7,742	7,270
Children Registered in Birth Year	1,250	1,046	1,012	953	1,029
Percentage of Live Births Registered	16.8%	14.5%	14.0%	12.3%	14.2%

Source: Ministry of Health and Social Security Board

Table 1.8
Newly Registered Children Under One Year of Age
Who Registered within a Year After Birth by Registered Year, Birth Year and Sex,
2015 - 2019

Birth Year	Registered Year				
	2015	2016	2017	2018	2019
Total	2,349	2,150	1,971	1,952	2,088
2012	0	0	0	0	0
2013	0	0	0	0	0
2014	1,099	0	0	0	0
2015	1,250	1,104	0	0	0
2016	0	1,046	959	0	0
2017	0	0	1,012	999	0
2018	0	0	0	953	1,059
2019	0	0	0	0	1,029
Male	1,193	1,116	1,019	977	1,115
2012	0	0	0	0	0
2013	0	0	0	0	0
2014	558	0	0	0	0
2015	635	582	0	0	0
2016	0	534	490	0	0
2017	0	0	529	501	0
2018	0	0	0	476	548
2019	0	0	0	0	567
Female	1,156	1,034	952	975	973
2012	0	0	0	0	0
2013	0	0	0	0	0
2014	541	0	0	0	0
2015	615	522	0	0	0
2016	0	512	469	0	0
2017	0	0	483	498	0
2018	0	0	0	477	511
2019	0	0	0	0	462

Source: Social Security Board and Statistical Institute of Belize

Table 1.9
Newly Registered Children Under One Year of Age
Who Registered within a Year After Birth by Branch Registered,
2015 - 2019

Branch Registered	Registered Year				
	2015	2016	2017	2018	2019
Total	2,349	2,150	1,971	1,952	2,088
Corozal	235	202	169	181	167
Orange Walk	201	196	183	177	175
Belize	1,014	982	1,016	930	1,017
Santa Elena	103	105	109	124	149
Dangriga	203	174	94	106	104
Punta Gorda	228	150	84	112	92
Belmopan	165	141	153	192	199
Independence	135	144	106	68	109
San Pedro	65	56	57	62	76

Source: Social Security Board

Table 1.10
Percentage of Valid Card Holders in the Population by District,
2015 - 2019

District	Year				
	2015	2016	2017	2018	2019
Persons with Valid Cards	322,223	302,857	306,079	306,891	311,452
Corozal	34,643	33,166	33,703	33,814	35,058
Orange Walk	45,401	43,363	44,160	44,501	43,264
Belize	106,927	99,919	100,129	99,456	100,543
Cayo	69,828	66,720	67,713	68,136	72,732
Stann Creek	40,361	37,165	37,681	37,757	38,950
Toledo	25,063	22,524	22,693	23,227	20,905
Population	368,310	377,969	385,766	395,882	406,262
Corozal	45,530	46,472	47,231	48,217	49,229
Orange Walk	49,466	50,208	50,807	51,583	52,380
Belize	110,645	113,878	116,489	119,876	123,351
Cayo	87,876	90,579	92,760	95,591	98,495
Stann Creek	39,865	41,032	41,975	43,197	44,451
Toledo	34,928	35,800	36,504	37,418	38,356
Percentage of Valid Card Holders in the Population	87.5	80.1	79.3	77.5	76.7
Corozal	76.1	71.4	71.4	70.1	71.2
Orange Walk	91.8	86.4	86.9	86.3	82.6
Belize	96.6	87.7	86.0	83.0	81.5
Cayo	79.5	73.7	73.0	71.3	73.8
Stann Creek	101.2	90.6	89.8	87.4	87.6
Toledo	71.8	62.9	62.2	62.1	54.5

Source: Social Security Board and Statistical Institute of Belize

Note: Population data are from mid year estimates based on intercensal growth rates and the Labour Force Surveys.

Table 1.11
Valid Cards by Card Type,
2015 - 2019

Card Type	Year				
	2015	2016	2017	2018	2019
Total	322,223	302,857	306,079	306,891	311,452
Minor (< 14 yrs)	75,318	67,133	65,961	70,720	63,798
Adult (14 - 64 yrs)	223,231	217,589	219,575	216,959	226,380
Senior (65+ yrs)	23,674	18,135	20,543	19,212	21,274

Source: Social Security Board

Table 1.12
Newly Registered Employers by District,
2015 - 2019

District	Registered Year				
	2015	2016	2017	2018r	2019p
Total	1,462	1,463	1,424	1,562	1,605
Corozal	201	177	166	174	157
Orange Walk	176	171	173	216	209
Belize	509	535	532	557	572
Cayo	308	309	323	348	331
Stann Creek	198	201	199	222	271
Toledo	70	70	31	45	65

Source: Social Security Board

Table 1.13
Newly Registered Businesses by District,
2015 - 2019

District	Registered Year				
	2015	2016	2017	2018r	2019p
Total	1,640	1,780	1,791	1,967	2,102
Corozal	232	229	200	204	198
Orange Walk	187	219	187	270	268
Belize	569	599	721	713	760
Cayo	332	371	368	429	446
Stann Creek	226	235	250	258	310
Toledo	94	127	65	93	120

Source: Social Security Board

**Table 1.14
Newly Registered Businesses by Economic Activity,
2015 - 2019**

Industry (Economic Activity)	Registered Year				
	2015	2016	2017	2018r	2019p
Total Active Insured Persons	1,640	1,780	1,791	1,967	2,102
Accommodation and Food Service Activities	241	300	341	372	399
Activities of Households as Employers; Undifferentiated Goods & Service Producing Activities of Households for Own Use	291	366	297	352	378
Construction	227	261	204	228	269
Wholesale and Retail Trade; Repair of Motor Vehicles and Motorcycles	243	272	305	287	263
Other Service Activities	49	42	45	102	143
Administrative and Support Service Activities	85	84	207	113	133
Manufacturing	91	99	91	100	130
Agriculture	131	126	97	137	111
Professional, Scientific and Technical Activities	62	39	50	61	64
Transportation and Storage	58	68	40	66	60
Arts, Entertainment and Recreation	12	6	14	22	27
Human Health and Social Work Activities	30	41	22	30	22
Real Estate Activities	20	17	24	18	17
Financial and Insurance Activities	19	6	8	9	15
Information and Communication	16	12	9	20	14
Education	14	11	5	9	12
Fishing and Aquaculture	4	11	9	13	11
Water Supply; Sewerage, Waste Management and Remediation Activities	4	7	10	5	9
Public Administration and Defence; Compulsory Social Security	13	3	8	5	7
Mining and Quarrying	6	0	1	3	6
Electricity, Gas Steam and Air Condition Supply	6	4	0	10	6
Forestry and Logging	16	4	3	5	5
Activities of Extra-Territorial Organizations and Bodies	2	1	0	0	1
Do Not Know or Not Stated	0	0	1	0	0

Source: Social Security Board

Table 1.15
Newly Registered Businesses by Economic Activity and District,
2019

Industry (Economic Activity)	Business District						
	Total	Corozal	Orange Walk	Belize	Cayo	Stann Creek	Toledo
Total Active Insured Persons	2,102	198	268	760	446	310	120
Accommodation and Food Service Activities	399	26	23	195	76	62	17
Activities of Households as Employers; Undifferentiated Goods & Service Producing Activities of Households for Own Use	378	43	48	115	96	56	20
Construction	269	38	61	87	39	29	15
Wholesale and Retail Trade; Repair of Motor Vehicles and Motorcycles	263	27	42	94	43	42	15
Other Service Activities	143	10	12	59	28	26	8
Administrative and Support Service Activities	133	1	9	66	30	23	4
Manufacturing	130	7	18	40	37	13	15
Agriculture	111	29	23	4	29	17	9
Professional, Scientific and Technical Activities	64	5	6	30	14	4	5
Transportation and Storage	60	4	10	11	14	14	7
Arts, Entertainment and Recreation	27	0	2	11	9	5	0
Human Health and Social Work Activities	22	1	5	8	5	2	1
Real Estate Activities	17	0	1	11	1	3	1
Financial and Insurance Activities	15	4	2	3	6	0	0
Information and Communication	14	0	1	5	5	2	1
Education	12	0	0	5	5	2	0
Fishing and Aquaculture	11	3	0	4	0	3	1
Water Supply; Sewerage, Waste Management and Remediation Activities	9	0	1	3	3	2	0
Public Administration and Defence; Compulsory Social Security	7	0	0	2	4	1	0
Mining and Quarrying	6	0	0	4	2	0	0
Electricity, Gas Steam and Air Condition Supply	6	0	2	2	0	2	0
Forestry and Logging	5	0	2	0	0	2	1
Activities of Extra-Territorial Organizations and Bodies	1	0	0	1	0	0	0
Do Not Know or Not Stated	0	0	0	0	0	0	0

Source: Social Security Board

CONTRIBUTIONS

This section presents data on Contributions made to the SSB and characteristics of the actively Insured Persons (IP's), as well as the active businesses, employers and the self-employed. The principal source of the contribution data is the SSB's database, captured through the Contributions Management System (CMS).

**Schedule of Contributions Based on Weekly Insurable Earnings
July 1, 2003 - June 30, 2019**

Weekly Earnings Group	Average Insurable Earnings (BZ\$)	Employees' Contributions (BZ\$)	Employers' Contributions (BZ\$)	Total Weekly Contributions (BZ\$)
Under \$70.00	55.00	0.83	3.57	4.40
\$70.00 to \$109.99	90.00	1.35	5.85	7.20
\$110.00 to \$139.99	130.00	1.95	8.45	10.40
\$140.00 to \$179.99	160.00	3.15	9.65	12.80
\$180.00 to \$219.99	200.00	4.75	11.25	16.00
\$220.00 to \$259.99	240.00	6.35	12.85	19.20
\$260.00 to \$299.99	280.00	7.95	14.45	22.40
\$300.00 and Over	320.00	9.55	16.05	25.60
**	0.00	0.00	2.60	2.60

Source: Social Security Board

Note: ** Applies to persons age 60 - 64 years who have received a retirement benefit and all persons 65 years and older.

**Schedule of Contributions Based on Weekly Insurable Earnings
July 1, 2019 - January 5, 2020**

Weekly Earnings Group	Average Insurable Earnings (BZ\$)	Employees' Contributions (BZ\$)	Employers' Contributions (BZ\$)	Total Weekly Contributions (BZ\$)
Under \$70.00	55.00	0.88	3.80	4.68
\$70.00 to \$109.99	90.00	1.43	6.22	7.65
\$110.00 to \$139.99	130.00	2.07	8.98	11.05
\$140.00 to \$179.99	160.00	3.35	10.25	13.60
\$180.00 to \$219.99	200.00	5.05	11.95	17.00
\$220.00 to \$259.99	240.00	6.75	13.65	20.40
\$260.00 to \$299.99	280.00	8.45	15.35	23.80
\$300.00 to \$339.99	320.00	10.15	17.05	27.20
\$340.00 to \$379.99	360.00	11.89	18.71	30.60
\$380.00 to \$419.99	400.00	13.73	20.27	34.00
\$420.00 and Over	440.00	15.68	21.72	37.40
**	0.00	0.00	2.60	2.60

Source: Social Security Board

Note: ** Applies to persons age 60 - 64 years who have received a retirement benefit and all persons 65 years and older.

Methods of payments - Employers can pay contributions on behalf of their employees in the following ways:

1. *Direct* – is the most commonly used method and payment can be made by visiting any of the nine SSB Branch Offices located in all district towns and five of the most economically active rural areas. At the SSB's Branch Offices, cashiers receive payments and the completed statement of contribution forms with details of the contributions made.
2. *Drop box* – an assigned public box with a slot into which an employer can place contribution payments via cheques only along with the respective completed Statement of Contributions (FIN15A). A drop box is located at the main entrance of each SSB Branch Office countrywide and is accessible after SSB's normal working hours and on weekends. Upon processing of payments made via the drop box, SSB sends a receipt via e-mail or through the postal mail to the employer.
3. *Online* – is the most recently introduced method of paying contributions for customers' convenience. Contribution payments can now be paid with four commercial banks. The information on the statement of contribution form is attached along with the online payment information electronically in a predefined text format. The contribution information can be received in hard copy at the designated banks.
4. *The Government of Belize (GOB)* – makes the payments for its employees by direct deposit and sends the statement of contributions electronically through the GOB payment system.

All contributions collected are accrued into the Social Security Fund and are used to pay benefits and administrative expenditures, and invested to earn income for future expenditures and payment of pensions.

Table 2.1
Total Contributions and Total Benefit Expenditure,
2015 - 2019
(BZ\$)

	Year				
	2015	2016	2017	2018r	2019p
Total Contributions	\$94,402,015	\$97,091,689	\$99,610,536	\$104,643,423	\$118,130,516
Total Benefit Expenditure	\$77,192,346	\$79,986,561	\$86,324,696	\$90,449,763	\$97,805,955
Total Benefit Expenditure as a % of Total Contributions	81.8%	82.4%	86.7%	86.4%	82.8%
Contributions (Total Contributions Less GOB Contribution to the NHI Fund)	\$77,377,011	\$80,091,685	\$82,610,532	\$87,043,419	\$100,180,515
Benefit Expenditure (Total Benefit Expenditure Less NHI Expenditures)	\$59,255,405	\$63,845,496	\$70,502,031	\$74,144,554	\$81,099,490
Benefit Expenditure as a % of Contributions	76.6%	79.7%	85.3%	85.2%	81.0%

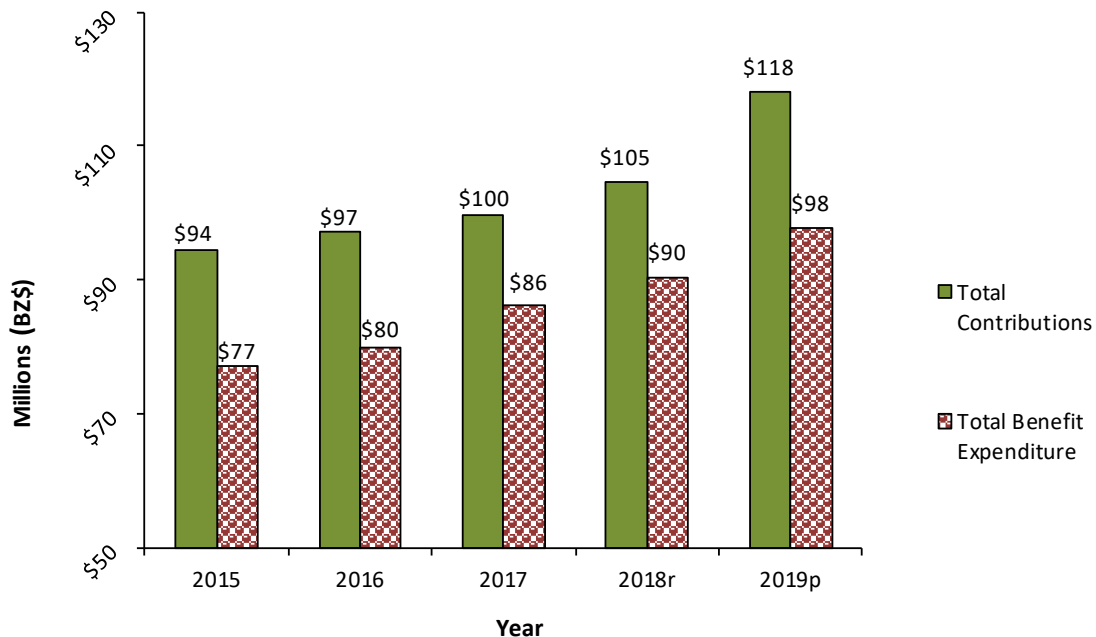
Source: Social Security Board

Notes: Total Contributions figures represent GOB contributions to the NHI Fund as well as those collected from employers, employees, voluntary and self employed persons.

Total Benefit Expenditure figures represent payments made to the four SSB Benefit Branches and payments made to NHI Primary Care Providers.

The significant increase in contribution income from 2018 to 2019 is mainly due to the increase in the Contribution Rate from 8.0% to 8.5% and the expansion of the Contribution Ceiling from \$300.00 and Over to \$420.00 and Over for the period July to December 2019.

Chart 1
Total Contributions and Total Benefit Expenditure,
2015 - 2019

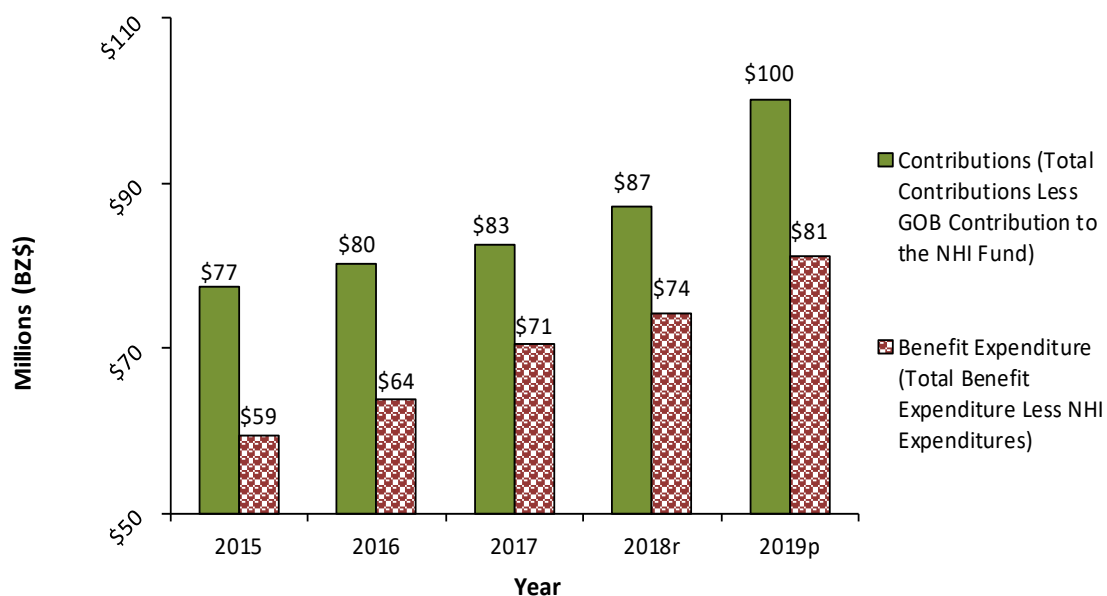


Source: Social Security Board

Notes: Total Contributions figures represent GOB contributions to the NHI Fund as well as those collected from employers, employees, voluntary and self employed persons.

Total Benefit Expenditure figures represent payments made to the four SSB Benefit Branches and payments made to NHI Primary Care Providers.

Chart 2
Contributions and Benefit Expenditure,
2015 - 2019



Source: Social Security Board

Table 2.2
Contributions Collected and its Percentage Distribution by District,
2015 - 2019
(BZ\$)

District	Year									
	2015		2016		2017		2018r		2019p	
	Quantity	%	Quantity	%	Quantity	%	Quantity	%	Quantity	%
Total	\$77,377,011	100.0	\$80,091,685	100.0	\$82,610,532	100.0	\$87,043,419	100.0	\$100,180,515	100.0
Corozal	\$4,328,060	5.6	\$3,959,549	4.9	\$3,849,929	4.7	\$4,108,749	4.7	\$4,562,182	4.6
Orange Walk	\$4,816,940	6.2	\$5,121,111	6.4	\$5,113,144	6.2	\$5,462,090	6.3	\$6,290,976	6.3
Belize	\$34,036,504	44.0	\$35,507,289	44.3	\$36,709,348	44.4	\$39,256,521	45.1	\$40,802,660	40.7
Cayo	\$23,601,242	30.5	\$25,096,756	31.3	\$25,866,680	31.3	\$26,933,456	30.9	\$35,981,874	35.9
Stann Creek	\$9,277,661	12.0	\$9,013,803	11.3	\$9,688,250	11.7	\$9,843,680	11.3	\$10,924,994	10.9
Toledo	\$1,316,604	1.7	\$1,393,179	1.7	\$1,383,180	1.7	\$1,438,923	1.7	\$1,617,829	1.6

Source: Social Security Board

Notes: Contributions figures reflect those collected from employers, employees, voluntary and self employed persons.

The significant increase in contribution income from 2018 to 2019 is mainly due to the increase in the Contribution Rate from 8.0% to 8.5% and the expansion of the Contribution Ceiling from \$300.00 and Over to \$420.00 and Over for the period July to December 2019.

Table 2.3
Active Insured Persons and the Labour Force Participation Rates,
2015 - 2019

	Year				
	2015	2016	2017	2018r	2019p
Number of Persons in the Labour Force	153,689	162,254	164,935	172,086	178,499
Number of Persons Employed in the Labour Force	138,145	144,302	150,112	155,950	164,842
Number of Active Insured Persons	102,456	104,321	105,846	109,071	110,937
Population	368,310	377,969	385,766	395,882	406,262
% of Active Insured in the Labour Force	66.7%	64.3%	64.2%	63.4%	62.1%
% of Active Insured in the Employed Force	74.2%	72.3%	70.5%	69.9%	67.3%
% of Active Insured in the Population	27.8%	27.6%	27.4%	27.6%	27.3%

Source: Social Security Board and Statistical Institute of Belize

Chart 3
Labour Force, Employed Labour Force and Active Insured Persons,
2015 - 2019



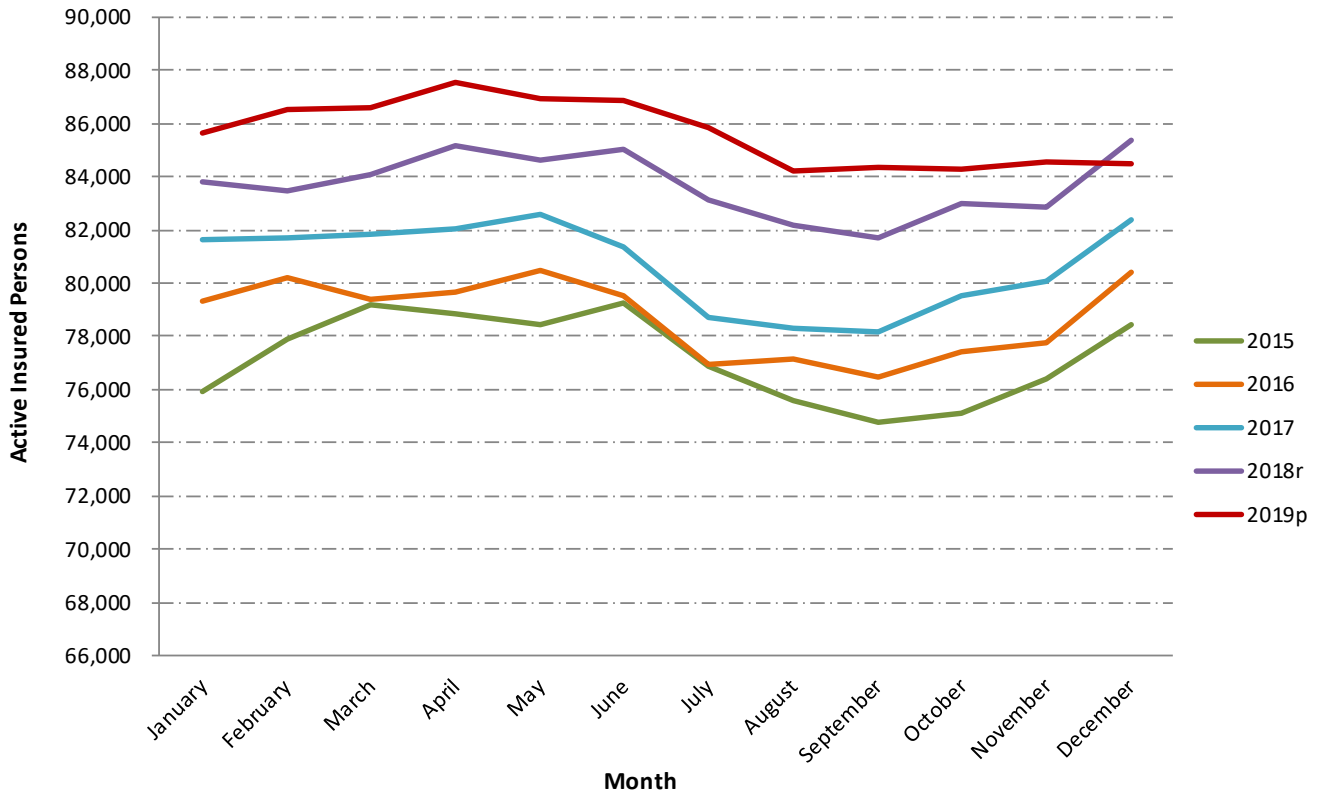
Source: Social Security Board and Statistical Institute of Belize

Table 2.4
Active Insured Persons by District, Sex and Age Group,
2015 - 2019

Selected Characteristics	Year				
	2015	2016	2017	2018r	2019p
Total	102,456	104,321	105,846	109,071	110,937
District					
Corozal	8,842	8,455	8,053	7,939	7,576
Orange Walk	9,073	9,453	9,141	9,564	9,785
Belize	41,992	43,231	44,626	46,339	47,131
Cayo	25,297	25,981	26,216	26,861	27,924
Stann Creek	12,963	12,756	13,380	14,279	14,896
Toledo	4,289	4,445	4,430	4,089	3,625
Sex					
Male	63,695	64,276	64,900	66,264	66,817
Female	38,761	40,045	40,946	42,807	44,034
Age Group					
14 - 24	25,209	25,453	25,260	26,014	26,103
25 - 34	32,880	33,250	33,843	34,673	35,379
35 - 44	22,802	23,294	23,734	24,513	24,948
45 - 54	14,373	14,857	15,257	15,705	16,178
55+	7,191	7,467	7,749	8,166	8,329
DK/NS	1	-	3	-	-

Source: Social Security Board

Chart 4
Active Insured Persons by Month,
2015 - 2019



Source: Contributions Database, Social Security Board

Table 2.5
Active Insured Persons and their Percentage Distribution by Industry,
2015 - 2019

Industry	Year									
	2015		2016		2017		2018r		2019p	
	Quantity	%	Quantity	%	Quantity	%	Quantity	%	Quantity	%
Total Active Insured Persons	102,456	100.0	104,321	100.0	105,846	100.0	109,071	100.0	110,937	100.0
Wholesale and Retail Trade; Repair of Motor Vehicles and Motorcycles	15,179	14.8	16,201	15.5	16,404	15.5	17,208	15.8	17,578	15.8
Accommodation and Food Service Activities	13,374	13.1	14,272	13.7	15,225	14.4	16,036	14.7	16,492	14.9
Public Administration and Defence; Compulsory Social Security	15,931	15.5	15,377	14.7	14,479	13.7	15,224	14.0	15,309	13.8
Agriculture	16,269	15.9	14,506	13.9	13,976	13.2	13,565	12.4	13,158	11.9
Construction	9,807	9.6	10,105	9.7	9,255	8.7	9,695	8.9	10,192	9.2
Manufacturing	9,346	9.1	9,607	9.2	10,286	9.7	9,514	8.7	9,981	9.0
Administrative and Support Service Activities	5,446	5.3	5,926	5.7	6,211	5.9	7,306	6.7	7,991	7.2
Education	6,876	6.7	6,957	6.7	7,342	6.9	7,297	6.7	6,992	6.3
Professional, Scientific and Technical Activities	4,857	4.7	5,362	5.1	5,168	4.9	6,151	5.6	5,804	5.2
Information and Communication	2,813	2.7	3,351	3.2	3,723	3.5	3,717	3.4	4,110	3.7
Transportation and Storage	3,539	3.5	3,861	3.7	3,959	3.7	3,931	3.6	3,832	3.5
Financial and Insurance Activities	3,119	3.0	3,220	3.1	3,203	3.0	3,323	3.0	3,279	3.0
Activities of Households as Employers; Undifferentiated Goods & Service Producing Activities of Households for Own Use	2,597	2.5	2,948	2.8	2,900	2.7	2,794	2.6	2,856	2.6
Other Service Activities	2,431	2.4	2,394	2.3	2,211	2.1	2,491	2.3	2,574	2.3
Human Health and Social Work Activities	2,101	2.1	2,221	2.1	2,457	2.3	2,470	2.3	2,522	2.3
Arts, Entertainment and Recreation	1,975	1.9	2,030	1.9	1,938	1.8	2,015	1.8	1,988	1.8
Fishing and Aquaculture	2,247	2.2	1,588	1.5	1,467	1.4	1,353	1.2	1,020	0.9
Water Supply; Sewerage, Waste Management and Remediation Activities	1,107	1.1	932	0.9	1,006	1.0	976	0.9	998	0.9
Electricity, Gas, Steam and Air Condition Supply	604	0.6	645	0.6	739	0.7	753	0.7	864	0.8
Real Estate Activities	681	0.7	933	0.9	1,054	1.0	932	0.9	779	0.7
Mining and Quarrying	708	0.7	543	0.5	631	0.6	617	0.6	616	0.6
Activities of Extra-Territorial Organizations and Bodies	362	0.4	376	0.4	433	0.4	438	0.4	443	0.4
Forestry and Logging	429	0.4	411	0.4	339	0.3	335	0.3	342	0.3
Do Not Know or Not Stated	16	0.0	22	0.0	28	0.0	42	0.0	63	0.1

Source: Social Security Board

Notes: The total number of Active Insured Persons shown is not equal to the sum of the Insured Persons in each industry during the respective years due to persons working in different industries during the year.

The sum of the percentages of Insured Persons in each industry does not add up to 100% during the respective years due to persons working in different industries during the year.

Classification of Industry as per International Standard Industrial Classification of Economic Activities Revision 4.

Table 2.6
Active Insured Persons and their Percentage Distribution by Average Weekly Insurable Earnings,
2015 - 2018

Weekly Earnings Group	Year							
	2015		2016		2017		2018r	
	Quantity	%	Quantity	%	Quantity	%	Quantity	%
Total	102,456	100.0	104,321	100.0	105,846	100.0	109,071	100.0
Under \$70.00	5,745	5.6	5,110	4.9	4,721	4.5	4,686	4.3
\$70.00 to \$109.99	7,775	7.6	6,795	6.5	6,649	6.3	6,434	5.9
\$110.00 to \$139.99	6,470	6.3	5,890	5.6	5,827	5.5	5,921	5.4
\$140.00 to \$179.99	14,314	14.0	13,710	13.1	13,158	12.4	13,611	12.5
\$180.00 to \$219.99	12,372	12.1	12,645	12.1	12,748	12.0	13,177	12.1
\$220.00 to \$259.99	10,305	10.1	11,024	10.6	11,122	10.5	11,392	10.4
\$260.00 to \$299.99	6,198	6.0	6,625	6.4	6,624	6.3	6,915	6.3
\$300.00 and Over	37,978	37.1	41,203	39.5	43,651	41.2	45,531	41.7
**	1,299	1.3	1,319	1.3	1,346	1.3	1,404	1.3

Source: Social Security Board

Note: ** Applies to persons age 60 - 64 years who have received a retirement benefit and all persons 65 years and older.

Table 2.7
Active Insured Persons and their Percentage Distribution by Average
Weekly Insurable Earnings,
2019

Weekly Earnings Group	Year	
	2019p	
	Quantity	%
Total	110,937	100.0
Under \$70.00	4,194	3.8
\$70.00 - \$109.99	5,866	5.3
\$110.00 - \$139.99	5,416	4.9
\$140.00 - \$179.99	12,278	11.1
\$180.00 - \$219.99	13,345	12.0
\$220.00 - \$259.99	12,045	10.9
\$260.00 - \$299.99	7,447	6.7
\$300.00 and Over	2,568	2.3
\$300.00 - \$339.99	8,795	7.9
\$340.00 - \$379.99	5,278	4.8
\$380.00 - \$419.99	4,561	4.1
\$420.00 and Over	27,709	25.0
**	1,435	1.3

Source: Social Security Board

Notes: ** Applies to persons age 60 - 64 years who have received a retirement benefit and all persons 65 years and older.

AIPs that are within the 2019 Average Weekly Insurable Earnings \$300 & Over Group are those who are Self-Employed and AIPs who only contributed to the \$300 & Over Group for the period January to June 2019.

Table 2.8
Number of Active Insured Persons by Industry and Average Weekly Insurable Earnings,
2015

Industry	Average Weekly Insurable Earnings											Total
	Under \$70.00	\$70.00 to \$109.99	\$110.00 to \$139.99	\$140.00 to \$179.99	\$180.00 to \$219.99	\$220.00 to \$259.99	\$260.00 to \$299.99	\$300.00 and Over	**			
Total	5,745	7,775	6,470	14,314	12,372	10,305	6,198	37,978	1,299	1,299	102,456	
Agriculture	3,063	2,854	2,001	2,573	1,830	1,239	655	1,643	411	411	16,269	
Public Administration and Defence; Compulsory Social Security	500	667	381	1,488	1,282	1,546	1,030	8,866	171	171	15,931	
Wholesale and Retail Trade; Repair of Motor Vehicles and Motorcycles	694	973	1,046	3,630	2,815	1,865	909	3,135	112	112	15,179	
Accommodation and Food Service Activities	599	984	1,026	2,237	1,718	1,391	859	4,484	76	76	13,374	
Construction	401	721	639	1,415	1,722	1,271	762	2,776	99	99	9,806	
Manufacturing	562	686	738	1,753	1,377	974	514	2,647	95	95	9,346	
Education	89	119	143	325	296	334	305	5,195	70	70	6,876	
Administrative and Support Service Activities	223	482	343	612	819	748	452	1,720	47	47	5,446	
Professional, Scientific and Technical Activities	280	775	276	504	668	535	313	1,473	33	33	4,857	
Transportation and Storage	126	192	232	404	414	409	252	1,454	56	56	3,539	
Financial and Insurance Activities	23	58	69	103	148	195	168	2,334	21	21	3,119	
Information and Communication	89	141	369	314	237	225	110	1,313	15	15	2,813	
Activities of Households as Employers; Undifferentiated Goods & Service Producing Activities of Households for Own Use	261	454	318	615	351	189	85	299	25	25	2,597	
Other Service Activities	140	174	155	322	261	261	94	984	40	40	2,431	
Fishing and Aquaculture	275	269	189	404	291	225	182	401	11	11	2,247	
Human Health and Social Work Activities	31	79	52	174	228	276	138	1,107	16	16	2,101	
Arts, Entertainment and Recreation	91	89	103	303	252	294	193	631	19	19	1,975	
Water Supply; Sewerage, Waste Management and Remediation Activities	62	64	58	216	127	165	56	345	14	14	1,107	
Mining and Quarrying	39	26	42	83	67	76	33	330	12	12	708	
Real Estate Activities	21	36	19	77	69	80	40	334	5	5	681	
Electricity, Gas Steam and Air Condition Supply	5	16	8	35	26	29	11	469	5	5	604	
Forestry and Logging	16	28	25	91	80	60	20	94	15	15	429	
Activities of Extra-Territorial Organizations and Bodies	4	9	2	5	16	31	24	271	0	0	362	
Do Not Know or Not Stated	0	2	0	1	8	1	2	2	0	0	16	

Source: Social Security Board

Notes: The total number of Active Insured Persons shown is not equal to the sum of the Insured Persons in each industry during the respective years due to persons working in different industries during the year. Classification of Industry as per International Standard Industrial Classification of Economic Activities Revision 4.

** Applies to persons age 60 - 64 years who have received a retirement benefit and all persons 65 years and older.

Table 2.9
**Percentage Distribution of Active Insured Persons by Industry and Average Weekly Insurable Earnings,
 2015**

Industry	Average Weekly Insurable Earnings											
	Under \$70.00	\$70.00 to \$109.99	\$110.00 to \$139.99	\$140.00 to \$179.99	\$180.00 to \$219.99	\$220.00 to \$259.99	\$260.00 to \$299.99	\$300.00 and Over	Total	**	Total	
Total	100.0	100.0	100.0	100.0	100.0	100.0	100.0	100.0	100.0	100.0	100.0	100.0
Agriculture	53.3	36.7	30.9	18.0	14.8	12.0	10.6	4.3	31.6	15.9		
Public Administration and Defence; Compulsory Social Security	8.7	8.6	5.9	10.4	10.4	15.0	16.6	23.3	13.2	15.5		
Wholesale and Retail Trade; Repair of Motor Vehicles and Motorcycles	12.1	12.5	16.2	25.4	22.8	18.1	14.7	8.3	8.6	14.8		
Accommodation and Food Service Activities	10.4	12.7	15.9	15.6	13.9	13.5	13.9	11.8	5.9	13.1		
Construction	7.0	9.3	9.9	9.9	13.9	12.3	12.3	7.3	7.6	9.6		
Manufacturing	9.8	8.8	11.4	12.2	11.1	9.5	8.3	7.0	7.3	9.1		
Education	1.5	1.5	2.2	2.3	2.4	3.2	4.9	13.7	5.4	6.7		
Administrative and Support Service Activities	3.9	6.2	5.3	4.3	6.6	7.3	7.3	4.5	3.6	5.3		
Professional, Scientific and Technical Activities	4.9	10.0	4.3	3.5	5.4	5.2	5.1	3.9	2.5	4.7		
Transportation and Storage	2.2	2.5	3.6	2.8	3.3	4.0	4.1	3.8	4.3	3.5		
Financial and Insurance Activities	0.4	0.7	1.1	0.7	1.2	1.9	2.7	6.1	1.6	3.0		
Information and Communication	1.5	1.8	5.7	2.2	1.9	2.2	1.8	3.5	1.2	2.7		
Activities of Households as Employers; Undifferentiated Goods & Service Producing Activities of Households for Own Use	4.5	5.8	4.9	4.3	2.8	1.8	1.4	0.8	1.9	2.5		
Other Service Activities	2.4	2.2	2.4	2.2	2.1	2.5	1.5	2.6	3.1	2.4		
Fishing and Aquaculture	4.8	3.5	2.9	2.8	2.4	2.2	2.9	1.1	0.8	2.2		
Human Health and Social Work Activities	0.5	1.0	0.8	1.2	1.8	2.7	2.2	2.9	1.2	2.1		
Arts, Entertainment and Recreation	1.6	1.1	1.6	2.1	2.0	2.9	3.1	1.7	1.5	1.9		
Water Supply; Sewerage, Waste Management and Remediation Activities	1.1	0.8	0.9	1.5	1.0	1.6	0.9	0.9	1.1	1.1		
Mining and Quarrying	0.7	0.3	0.6	0.6	0.5	0.7	0.5	0.9	0.9	0.7		
Real Estate Activities	0.4	0.5	0.3	0.5	0.6	0.8	0.6	0.9	0.4	0.7		
Electricity, Gas Steam and Air Condition Supply	0.1	0.2	0.1	0.2	0.2	0.3	0.2	1.2	0.4	0.6		
Forestry and Logging	0.3	0.4	0.4	0.6	0.6	0.6	0.3	0.2	1.2	0.4		
Activities of Extra-Territorial Organizations and Bodies	0.1	0.1	0.0	0.0	0.1	0.3	0.4	0.7	0.0	0.4		
Do Not Know or Not Stated	0.0	0.0	0.0	0.0	0.1	0.0	0.0	0.0	0.0	0.0		

Source: Social Security Board

Notes: The sum of the percentages of Insured Persons in each industry does not add up to 100% during the respective years due to persons working in different industries during the year.
 Classification of Industry as per International Standard Industrial Classification of Economic Activities Revision 4.

** Applies to persons age 60 - 64 years who have received a retirement benefit and all persons 65 years and older.

Table 2.10
Number of Active Insured Persons by Industry and Average Weekly Insurable Earnings,
2016

Industry	Average Weekly Insurable Earnings										Total
	Under \$70.00	\$70.00 to \$109.99	\$110.00 to \$139.99	\$140.00 to \$179.99	\$180.00 to \$219.99	\$220.00 to \$259.99	\$260.00 to \$299.99	\$300.00 and Over	**	Total	
Total	5,110	6,795	5,890	13,710	12,645	11,024	6,625	41,203	1,319	104,321	
Wholesale and Retail Trade; Repair of Motor Vehicles and Motorcycles	637	1,078	1,074	3,661	2,982	2,091	1,048	3,509	121	16,201	
Public Administration and Defence; Compulsory Social Security	432	447	258	872	1,008	1,560	1,208	9,422	170	15,377	
Agriculture	2,514	2,296	1,743	2,505	1,618	1,099	601	1,727	403	14,506	
Accommodation and Food Service Activities	557	993	1,007	2,355	1,953	1,529	978	4,826	74	14,272	
Construction	333	609	618	1,379	1,640	1,463	752	3,213	98	10,105	
Manufacturing	433	577	650	1,758	1,471	992	541	3,075	110	9,607	
Education	75	86	143	247	319	366	301	5,352	68	6,957	
Administrative and Support Service Activities	236	506	347	667	778	812	514	2,025	41	5,926	
Professional, Scientific and Technical Activities	112	988	188	408	830	797	367	1,633	39	5,362	
Transportation and Storage	136	169	232	385	492	498	294	1,604	51	3,861	
Information and Communication	372	137	187	385	269	271	151	1,558	21	3,351	
Financial and Insurance Activities	39	61	52	83	126	209	187	2,442	21	3,220	
Activities of Households as Employers; Undifferentiated Goods & Service Producing Activities of Households for Own Use	268	458	322	654	477	278	78	388	25	2,948	
Other Service Activities	83	144	128	322	262	230	114	1,061	50	2,394	
Human Health and Social Work Activities	36	59	62	139	243	252	164	1,254	12	2,221	
Arts, Entertainment and Recreation	110	105	96	274	324	282	191	625	23	2,030	
Fishing and Aquaculture	326	233	151	277	164	99	60	269	9	1,588	
Real Estate Activities	19	25	19	66	81	109	58	550	6	933	
Water Supply; Sewerage, Waste Management and Remediation Activities	70	73	46	134	96	106	56	340	11	932	
Electricity, Gas Steam and Air Condition Supply	9	10	11	41	44	27	21	478	4	645	
Mining and Quarrying	10	15	24	43	50	66	29	295	11	543	
Forestry and Logging	22	20	33	69	73	79	23	77	15	411	
Activities of Extra-Territorial Organizations and Bodies	2	3	1	7	16	36	21	288	2	376	
Do Not Know or Not Stated	0	2	0	3	8	1	5	3	0	22	

Source: Social Security Board

Notes: The total number of Active Insured Persons shown is not equal to the sum of the Insured Persons in each industry during the respective years due to persons working in different industries during the year. Classification of Industry as per International Standard Industrial Classification of Economic Activities Revision 4.

** Applies to persons age 60 - 64 years who have received a retirement benefit and all persons 65 years and older.

Table 2.11
Percentage Distribution of Active Insured Persons by Industry and Average Weekly Insurable Earnings,
2016

Industry	Average Weekly Insurable Earnings										Total
	Under \$70.00	\$70.00 to \$109.99	\$110.00 to \$139.99	\$140.00 to \$179.99	\$180.00 to \$219.99	\$220.00 to \$259.99	\$260.00 to \$299.99	\$300.00 and Over	**	Total	
Total	100.0	100.0	100.0	100.0	100.0	100.0	100.0	100.0	100.0	100.0	100.0
Wholesale and Retail Trade; Repair of Motor Vehicles and Motorcycles	12.5	15.9	18.2	26.7	23.6	19.0	15.8	8.5	9.2	15.5	15.5
Public Administration and Defence; Compulsory Social Security	8.5	6.6	4.4	6.4	8.0	14.2	18.2	22.9	12.9	14.7	14.7
Agriculture	49.2	33.8	29.6	18.3	12.8	10.0	9.1	4.2	30.6	13.9	13.9
Accommodation and Food Service Activities	10.9	14.6	17.1	17.2	15.4	13.9	14.8	11.7	5.6	13.7	13.7
Construction	6.5	9.0	10.5	10.1	13.0	13.3	11.4	7.8	7.4	9.7	9.7
Manufacturing	8.5	8.5	11.0	12.8	11.6	9.0	8.2	7.5	8.3	9.2	9.2
Education	1.5	1.3	2.4	1.8	2.5	3.3	4.5	13.0	5.2	6.7	6.7
Administrative and Support Service Activities	4.6	7.4	5.9	4.9	6.2	7.4	7.8	4.9	3.1	5.7	5.7
Professional, Scientific and Technical Activities	2.2	14.5	3.2	3.0	6.6	7.2	5.5	4.0	3.0	5.1	5.1
Transportation and Storage	2.7	2.5	3.9	2.8	3.9	4.5	4.4	3.9	3.9	3.7	3.7
Information and Communication	7.3	2.0	3.2	2.8	2.1	2.5	2.3	3.8	1.6	3.2	3.2
Financial and Insurance Activities	0.8	0.9	0.9	0.6	1.0	1.9	2.8	5.9	1.6	3.1	3.1
Activities of Households as Employers; Undifferentiated Goods & Service Producing Activities of Households for Own Use	5.2	6.7	5.5	4.8	3.8	2.5	1.2	0.9	1.9	2.8	2.8
Other Service Activities	1.6	2.1	2.2	2.3	2.1	2.1	1.7	2.6	3.8	2.3	2.3
Human Health and Social Work Activities	0.7	0.9	1.1	1.0	1.9	2.3	2.5	3.0	0.9	2.1	2.1
Arts, Entertainment and Recreation	2.2	1.5	1.6	2.0	2.6	2.6	2.9	1.5	1.7	1.9	1.9
Fishing and Aquaculture	6.4	3.4	2.6	2.0	1.3	0.9	0.9	0.7	0.7	1.5	1.5
Real Estate Activities	0.4	0.4	0.3	0.5	0.6	1.0	0.9	1.3	0.5	0.9	0.9
Water Supply; Sewerage, Waste Management and Remediation Activities	1.4	1.1	0.8	1.0	0.8	1.0	0.8	0.8	0.8	0.9	0.9
Electricity, Gas Steam and Air Condition Supply	0.2	0.1	0.2	0.3	0.3	0.2	0.3	1.2	0.3	0.6	0.6
Mining and Quarrying	0.2	0.2	0.4	0.3	0.4	0.6	0.4	0.7	0.8	0.5	0.5
Forestry and Logging	0.4	0.3	0.6	0.5	0.6	0.7	0.3	0.2	1.1	0.4	0.4
Activities of Extra-Territorial Organizations and Bodies	0.0	0.0	0.0	0.1	0.1	0.3	0.3	0.7	0.2	0.4	0.4
Do Not Know or Not Stated	0.0	0.0	0.0	0.0	0.1	0.0	0.1	0.0	0.0	0.0	0.0

Source: Social Security Board

Notes: The sum of the percentages of Insured Persons in each industry does not add up to 100% during the respective years due to persons working in different industries during the year.
Classification of Industry as per International Standard Industrial Classification of Economic Activities Revision 4.

** Applies to persons age 60 - 64 years who have received a retirement benefit and all persons 65 years and older.

**Table 2.12
Number of Active Insured Persons by Industry and Average Weekly Insurable Earnings,
2017**

Industry	Average Weekly Insurable Earnings										Total
	Under \$70.00	\$70.00 to \$109.99	\$110.00 to \$139.99	\$140.00 to \$179.99	\$180.00 to \$219.99	\$220.00 to \$259.99	\$260.00 to \$299.99	\$300.00 and Over	**	Total	
Total	4,721	6,649	5,827	13,158	12,748	11,122	6,624	43,651	1,346	105,846	
Wholesale and Retail Trade; Repair of Motor Vehicles and Motorcycles	612	1,015	1,107	3,297	3,019	2,220	1,143	3,863	128	16,404	
Accommodation and Food Service Activities	561	1,008	999	2,312	2,046	1,650	1,031	5,538	80	15,225	
Public Administration and Defence; Compulsory Social Security	375	246	183	878	986	1,291	1,022	9,325	173	14,479	
Agriculture	2,158	2,230	1,678	2,355	1,736	1,127	589	1,709	394	13,976	
Manufacturing	446	576	629	1,653	1,583	1,093	625	3,576	105	10,286	
Construction	276	533	492	1,117	1,387	1,298	712	3,352	88	9,255	
Education	81	128	147	275	412	402	269	5,562	66	7,342	
Administrative and Support Service Activities	249	553	351	703	834	814	447	2,204	56	6,211	
Professional, Scientific and Technical Activities	221	615	234	537	637	705	365	1,813	41	5,168	
Transportation and Storage	147	169	205	396	431	440	289	1,827	55	3,959	
Information and Communication	119	169	385	348	353	343	253	1,725	28	3,723	
Financial and Insurance Activities	30	49	55	98	115	240	144	2,449	23	3,203	
Activities of Households as Employers; Undifferentiated Goods & Service Producing Activities of Households for Own Use	255	443	286	666	487	262	92	385	24	2,900	
Human Health and Social Work Activities	27	65	79	165	260	270	180	1,392	19	2,457	
Other Service Activities	82	158	141	314	294	233	129	812	48	2,211	
Arts, Entertainment and Recreation	89	99	70	258	269	272	176	681	24	1,938	
Fishing and Aquaculture	271	217	166	231	165	125	55	226	11	1,467	
Real Estate Activities	30	61	30	102	122	144	81	474	10	1,054	
Water Supply; Sewerage, Waste Management and Remediation Activities	65	64	47	129	92	136	58	404	11	1,006	
Electricity, Gas, Steam and Air Condition Supply	5	18	12	43	56	54	24	521	6	739	
Mining and Quarrying	32	39	29	59	67	84	23	285	13	631	
Activities of Extra-Territorial Organizations and Bodies	0	4	5	10	18	50	22	324	0	433	
Forestry and Logging	15	14	17	44	70	54	20	94	11	339	
Do Not Know or Not Stated	0	2	0	3	4	6	1	12	0	28	

Source: Social Security Board

Notes: The total number of Active Insured Persons shown is not equal to the sum of the Insured Persons in each industry during the respective years due to persons working in different industries during the year. Classification of Industry as per International Standard Industrial Classification of Economic Activities Revision 4.

** Applies to persons age 60 - 64 years who have received a retirement benefit and all persons 65 years and older.

Table 2.13
Percentage Distribution of Active Insured Persons by Industry and Average Weekly Insurable Earnings,
2017

Industry	Average Weekly Insurable Earnings											Total
	Under \$70.00	\$70.00 to \$109.99	\$110.00 to \$139.99	\$140.00 to \$179.99	\$180.00 to \$219.99	\$220.00 to \$259.99	\$260.00 to \$299.99	\$300.00 and Over	**	Total		
Total	100.0	100.0	100.0	100.0	100.0	100.0	100.0	100.0	100.0	100.0	100.0	100.0
Wholesale and Retail Trade; Repair of Motor Vehicles and Motorcycles	13.0	15.3	19.0	25.1	23.7	20.0	17.3	8.8	9.5	15.5	15.5	15.5
Accommodation and Food Service Activities	11.9	15.2	17.1	17.6	16.0	14.8	15.6	12.7	5.9	14.4	14.4	14.4
Public Administration and Defence; Compulsory Social Security	7.9	3.7	3.1	6.7	7.7	11.6	15.4	21.4	12.9	13.7	13.7	13.7
Agriculture	45.7	33.5	28.8	17.9	13.6	10.1	8.9	3.9	29.3	13.2	13.2	13.2
Manufacturing	9.4	8.7	10.8	12.6	12.4	9.8	9.4	8.2	7.8	9.7	9.7	9.7
Construction	5.8	8.0	8.4	8.5	10.9	11.7	10.7	7.7	6.5	8.7	8.7	8.7
Education	1.7	1.9	2.5	2.1	3.2	3.6	4.1	12.7	4.9	6.9	6.9	6.9
Administrative and Support Service Activities	5.3	8.3	6.0	5.3	6.5	7.3	6.7	5.0	4.2	5.9	5.9	5.9
Professional, Scientific and Technical Activities	4.7	9.2	4.0	4.1	5.0	6.3	5.5	4.2	3.0	4.9	4.9	4.9
Transportation and Storage	3.1	2.5	3.5	3.0	3.4	4.0	4.4	4.2	4.1	3.7	3.7	3.7
Information and Communication	2.5	2.5	6.6	2.6	2.8	3.1	3.8	4.0	2.1	3.5	3.5	3.5
Financial and Insurance Activities	0.6	0.7	0.9	0.7	0.9	2.2	2.2	5.6	1.7	3.0	3.0	3.0
Activities of Households as Employers; Undifferentiated Goods & Service Producing Activities of Households for Own Use	5.4	6.7	4.9	5.1	3.8	2.4	1.4	0.9	1.8	2.7	2.7	2.7
Human Health and Social Work Activities	0.6	1.0	1.4	1.3	2.0	2.4	2.7	3.2	1.4	2.3	2.3	2.3
Other Service Activities	1.7	2.4	2.4	2.4	2.3	2.1	1.9	1.9	3.6	2.1	2.1	2.1
Arts, Entertainment and Recreation	1.9	1.5	1.2	2.0	2.1	2.4	2.7	1.6	1.8	1.8	1.8	1.8
Fishing and Aquaculture	5.7	3.3	2.8	1.8	1.3	1.1	0.8	0.5	0.8	1.4	1.4	1.4
Real Estate Activities	0.6	0.9	0.5	0.8	1.0	1.3	1.2	1.1	0.7	1.0	1.0	1.0
Water Supply; Sewerage, Waste Management and Remediation Activities	1.4	1.0	0.8	1.0	0.7	1.2	0.9	0.9	0.8	1.0	1.0	1.0
Electricity, Gas Steam and Air Condition Supply	0.1	0.3	0.2	0.3	0.4	0.5	0.4	1.2	0.4	0.7	0.7	0.7
Mining and Quarrying	0.7	0.6	0.5	0.4	0.5	0.8	0.3	0.7	1.0	0.6	0.6	0.6
Activities of Extra-Territorial Organizations and Bodies	0.0	0.1	0.1	0.1	0.1	0.4	0.3	0.7	0.0	0.4	0.4	0.4
Forestry and Logging	0.3	0.2	0.3	0.3	0.5	0.5	0.3	0.2	0.8	0.3	0.3	0.3
Do Not Know or Not Stated	0.0	0.0	0.0	0.0	0.0	0.1	0.0	0.0	0.0	0.0	0.0	0.0

Source: Social Security Board

Notes: The sum of the percentages of Insured Persons in each industry does not add up to 100% during the respective years due to persons working in different industries during the year.

Classification of Industry as per International Standard Industrial Classification of Economic Activities Revision 4.

** Applies to persons age 60 - 64 years who have received a retirement benefit and all persons 65 years and older.

**Table 2.14
Number of Active Insured Persons by Industry and Average Weekly Insurable Earnings,
2018r**

Industry	Under \$70.00	\$70.00 to \$109.99	\$110.00 to \$139.99	\$140.00 to \$179.99	\$180.00 to \$219.99	\$220.00 to \$259.99	\$260.00 to \$299.99	\$300.00 and Over	Total	
										**
Total	4,686	6,434	5,921	13,611	13,177	11,392	6,915	45,531	1,404	109,071
Wholesale and Retail Trade; Repair of Motor Vehicles and Motorcycles	614	1,114	1,140	3,503	3,084	2,409	1,192	4,000	152	17,208
Accommodation and Food Service Activities	566	1,037	1,019	2,282	2,205	1,737	1,141	5,970	79	16,036
Public Administration and Defence; Compulsory Social Security	349	175	184	911	1,200	1,231	1,194	9,809	171	15,224
Agriculture	1,978	2,090	1,686	2,384	1,593	1,135	607	1,689	403	13,565
Construction	338	497	478	1,090	1,403	1,474	725	3,587	103	9,695
Manufacturing	473	648	567	1,580	1,424	1,003	513	3,201	105	9,514
Administrative and Support Service Activities	352	670	503	822	902	949	518	2,523	67	7,306
Education	80	111	118	272	425	404	268	5,565	54	7,297
Professional, Scientific and Technical Activities	232	450	407	752	904	774	524	2,070	38	6,151
Transportation and Storage	179	157	200	377	462	477	272	1,746	61	3,931
Information and Communication	104	213	297	339	317	315	229	1,878	25	3,717
Financial and Insurance Activities	45	35	62	95	127	247	158	2,531	23	3,323
Activities of Households as Employers; Undifferentiated Goods & Service Producing Activities of Households for Own Use	211	439	285	639	457	252	90	390	31	2,794
Other Service Activities	89	162	137	311	353	293	170	932	44	2,491
Human Health and Social Work Activities	40	62	72	162	271	290	170	1,383	20	2,470
Arts, Entertainment and Recreation	81	125	176	394	247	245	153	565	29	2,015
Fishing and Aquaculture	322	189	79	223	161	104	38	229	8	1,353
Water Supply; Sewerage, Waste Management and Remediation Activities	58	55	57	126	92	119	42	415	12	976
Real Estate Activities	29	43	40	88	99	131	73	420	9	932
Electricity, Gas Steam and Air Condition Supply	11	14	10	68	50	34	37	520	9	753
Mining and Quarrying	12	31	19	62	60	92	34	294	13	617
Activities of Extra-Territorial Organizations and Bodies	3	6	0	8	14	41	24	342	0	438
Forestry and Logging	11	40	11	54	65	51	11	83	9	335
Do Not Know or Not Stated	1	5	0	4	2	9	3	17	1	42

Source: Social Security Board

Notes: The total number of Active Insured Persons shown is not equal to the sum of the Insured Persons in each industry during the respective years due to persons working in different industries during the year. Classification of Industry as per International Standard Industrial Classification of Economic Activities Revision 4.

** Applies to persons age 60 - 64 years who have received a retirement benefit and all persons 65 years and older.

Table 2.15
Percentage Distribution of Active Insured Persons by Industry and Average Weekly Insurable Earnings,
2018r

Industry	Average Weekly Insurable Earnings										Total
	Under \$70.00	\$70.00 to \$109.99	\$110.00 to \$139.99	\$140.00 to \$179.99	\$180.00 to \$219.99	\$220.00 to \$259.99	\$260.00 to \$299.99	\$300.00 and Over	**	Total	
Total	100.0	100.0	100.0	100.0	100.0	100.0	100.0	100.0	100.0	100.0	100.0
Wholesale and Retail Trade; Repair of Motor Vehicles and Motorcycles	13.1	17.3	19.3	25.7	23.4	21.1	17.2	8.8	10.8	15.8	15.8
Accommodation and Food Service Activities	12.1	16.1	17.2	16.8	16.7	15.2	16.5	13.1	5.6	14.7	14.7
Public Administration and Defence; Compulsory Social Security	7.4	2.7	3.1	6.7	9.1	10.8	17.3	21.5	12.2	14.0	14.0
Agriculture	42.2	32.5	28.5	17.5	12.1	10.0	8.8	3.7	28.7	12.4	12.4
Construction	7.2	7.7	8.1	8.0	10.6	12.9	10.5	7.9	7.3	8.9	8.9
Manufacturing	10.1	10.1	9.6	11.6	10.8	8.8	7.4	7.0	7.5	8.7	8.7
Administrative and Support Service Activities	7.5	10.4	8.5	6.0	6.8	8.3	7.5	5.5	4.8	6.7	6.7
Education	1.7	1.7	2.0	2.0	3.2	3.5	3.9	12.2	3.8	6.7	6.7
Professional, Scientific and Technical Activities	5.0	7.0	6.9	5.5	6.9	6.8	7.6	4.5	2.7	5.6	5.6
Transportation and Storage	3.8	2.4	3.4	2.8	3.5	4.2	3.9	3.8	4.3	3.6	3.6
Information and Communication	2.2	3.3	5.0	2.5	2.4	2.8	3.3	4.1	1.8	3.4	3.4
Financial and Insurance Activities	1.0	0.5	1.0	0.7	1.0	2.2	2.3	5.6	1.6	3.0	3.0
Activities of Households as Employers; Undifferentiated Goods & Service Producing Activities of Households for Own Use	4.5	6.8	4.8	4.7	3.5	2.2	1.3	0.9	2.2	2.6	2.6
Other Service Activities	1.9	2.5	2.3	2.3	2.7	2.6	2.5	2.0	3.1	2.3	2.3
Human Health and Social Work Activities	0.9	1.0	1.2	1.2	2.1	2.5	2.5	3.0	1.4	2.3	2.3
Arts, Entertainment and Recreation	1.7	1.9	3.0	2.9	1.9	2.2	2.2	1.2	2.1	1.8	1.8
Fishing and Aquaculture	6.9	2.9	1.3	1.6	1.2	0.9	0.5	0.5	0.6	1.2	1.2
Water Supply; Sewerage, Waste Management and Remediation Activities	1.2	0.9	1.0	0.9	0.7	1.0	0.6	0.9	0.9	0.9	0.9
Real Estate Activities	0.6	0.7	0.7	0.6	0.8	1.1	1.1	0.9	0.6	0.9	0.9
Electricity, Gas Steam and Air Condition Supply	0.2	0.2	0.2	0.5	0.4	0.3	0.5	1.1	0.6	0.7	0.7
Mining and Quarrying	0.3	0.5	0.3	0.5	0.5	0.8	0.5	0.6	0.9	0.6	0.6
Activities of Extra-Territorial Organizations and Bodies	0.1	0.1	0.0	0.1	0.1	0.4	0.3	0.8	0.0	0.4	0.4
Forestry and Logging	0.2	0.6	0.2	0.4	0.5	0.4	0.2	0.2	0.6	0.3	0.3
Do Not Know or Not Stated	0.0	0.1	0.0	0.0	0.0	0.1	0.0	0.0	0.1	0.0	0.0

Source: Social Security Board

Notes: The sum of the percentages of Insured Persons in each industry does not add up to 100% during the respective years due to persons working in different industries during the year.
 Classification of Industry as per International Standard Industrial Classification of Economic Activities Revision 4.

** Applies to persons age 60 - 64 years who have received a retirement benefit and all persons 65 years and older.

Table 2.16
Number of Active Insured Persons by Industry and Average Weekly Insurable Earnings,
2019p

Industry	Average Weekly Insurable Earnings											Total		
	Under \$70.00	\$70.00 to \$109.99	\$110.00 to \$139.99	\$140.00 to \$179.99	\$180.00 to \$219.99	\$220.00 to \$259.99	\$260.00 to \$299.99	\$300.00 to \$339.99	\$340.00 to \$379.99	\$380.00 to \$419.99	\$420.00 and Over			
Total	4,194	5,866	5,416	12,278	13,345	12,045	7,447	2,568	8,795	5,278	4,561	27,709	1,435	110,937
Wholesale and Retail Trade; Repair of Motor Vehicles and Motorcycles	700	1,054	1,076	3,377	3,169	2,452	1,197	309	1,121	774	476	1,741	132	17,578
Accommodation and Food Service Activities	605	1,004	909	2,351	2,414	1,895	1,149	645	1,295	849	616	2,670	90	16,492
Public Administration and Defence; Compulsory Social Security	414	143	117	696	1,013	1,454	1,115	363	749	823	931	7,333	158	15,309
Agriculture	1,489	1,889	1,571	2,049	1,805	1,234	755	321	529	278	204	609	425	13,158
Construction	258	414	427	916	1,342	1,423	808	878	1,051	602	444	1,510	119	10,192
Manufacturing	453	635	640	1,432	1,589	1,099	669	225	619	479	356	1,687	98	9,981
Administrative and Support Service Activities	443	641	513	879	975	1,003	647	256	711	397	285	1,153	88	7,991
Education	60	94	114	222	311	374	252	139	201	271	512	4,386	56	6,992
Professional, Scientific and Technical Activities	336	422	237	477	579	674	503	369	502	346	196	1,121	42	5,804
Information and Communication	150	154	472	357	287	306	245	125	241	147	167	1,437	22	4,110
Transportation and Storage	179	134	136	365	420	424	254	124	420	273	138	899	66	3,832
Financial and Insurance Activities	27	36	58	91	92	177	185	95	291	228	160	1,816	23	3,279
Activities of Households as Employers; Undifferentiated Goods & Service Producing Activities of Households for Own Use	192	413	261	674	490	268	83	43	166	51	52	133	30	2,856
Other Service Activities	94	141	126	337	386	337	139	68	178	93	113	504	58	2,574
Human Health and Social Work Activities	45	57	55	126	267	337	162	75	165	129	163	919	22	2,522
Arts, Entertainment and Recreation	69	96	82	258	264	287	161	76	157	87	81	348	22	1,988
Fishing and Aquaculture	129	89	62	196	168	127	58	22	41	26	28	67	7	1,020
Water Supply; Sewerage, Waste Management and Remediation Activities	51	47	49	115	93	133	49	23	85	59	50	233	11	998
Electricity, Gas Steam and Air Condition Supply	14	31	45	70	82	54	30	12	26	22	18	451	9	864
Real Estate Activities	29	17	22	46	73	116	62	27	79	64	51	183	10	779
Mining and Quarrying	20	30	8	44	58	113	27	18	25	30	33	196	14	616
Activities of Extra-Territorial Organizations and Bodies	2	5	1	6	13	43	32	11	28	39	52	209	2	443
Forestry and Logging	12	33	15	37	57	53	26	26	30	12	10	23	8	342
Do Not Know or Not Stated	0	1	0	1	5	27	1	3	11	9	2	3	0	63

Source: Social Security Board

Notes: The total number of Active Insured Persons shown is not equal to the sum of the Insured Persons in each industry during the respective years due to persons working in different industries during the year.

Classification of Industry as per International Standard Industrial Classification of Economic Activities Revision 4.

** Applies to persons age 60 - 64 years who have received a retirement benefit and all persons 65 years and older.

AIPs that are within the 2019 Average Weekly Insurable Earnings \$300 & Over Group are those who are Self-Employed and AIPs who only contributed to the \$300 & Over Group for the period January to June 2019.

Table 2.17
Percentage Distribution of Active Insured Persons by Industry and Average Weekly Insurable Earnings,
2019p

Industry	Average Weekly Insurable Earnings											Total		
	Under \$70.00	\$70.00 to \$109.99	\$110.00 to \$139.99	\$140.00 to \$179.99	\$180.00 to \$219.99	\$220.00 to \$259.99	\$260.00 to \$299.99	\$300.00 to \$339.99	\$340.00 to \$419.99	\$380.00 to \$420.00	\$420.00 and Over			
Total	100.0	100.0	100.0	100.0	100.0	100.0	100.0	100.0	100.0	100.0	100.0	100.0	100.0	100.0
Wholesale and Retail Trade; Repair of Motor Vehicles and Motorcycles	16.7	18.0	19.9	27.5	23.7	20.4	16.1	12.0	12.7	14.7	10.4	6.3	9.2	15.8
Accommodation and Food Service Activities	14.4	17.1	16.8	19.1	18.1	15.7	15.4	25.1	14.7	16.1	13.5	9.6	6.3	14.9
Public Administration and Defence; Compulsory Social Security	9.9	2.4	2.2	5.7	7.6	12.1	15.0	14.1	8.5	15.6	20.4	26.5	11.0	13.8
Agriculture	35.5	32.2	29.0	16.7	13.5	10.2	10.1	12.5	6.0	5.3	4.5	2.2	29.6	11.9
Construction	6.2	7.1	7.9	7.5	10.1	11.8	10.9	34.2	11.9	11.4	9.7	5.4	8.3	9.2
Manufacturing	10.8	10.8	11.8	11.7	11.9	9.1	9.0	8.8	7.0	9.1	7.8	6.1	6.8	9.0
Administrative and Support Service Activities	10.6	10.9	9.5	7.2	7.3	8.3	8.7	10.0	8.1	7.5	6.2	4.2	6.1	7.2
Education	1.4	1.6	2.1	1.8	2.3	3.1	3.4	5.4	2.3	5.1	11.2	15.8	3.9	6.3
Professional, Scientific and Technical Activities	8.0	7.2	4.4	3.9	4.3	5.6	6.8	14.4	5.7	6.6	4.3	4.0	2.9	5.2
Information and Communication	3.6	2.6	8.7	2.9	2.2	2.5	3.3	4.9	2.7	2.8	3.7	5.2	1.5	3.7
Transportation and Storage	4.3	2.3	2.5	3.0	3.1	3.5	3.4	4.8	4.8	5.2	3.0	3.2	4.6	3.5
Financial and Insurance Activities	0.6	0.6	1.1	0.7	0.7	1.5	2.5	3.7	3.3	4.3	3.5	6.6	1.6	3.0
Activities of Households as Employers; Undifferentiated Goods & Service Producing Activities of Households for Own Use	4.6	7.0	4.8	5.5	3.7	2.2	1.1	1.7	1.9	1.0	1.1	0.5	2.1	2.6
Other Service Activities	2.2	2.4	2.3	2.7	2.9	2.8	1.9	2.6	2.0	1.8	2.5	1.8	4.0	2.3
Human Health and Social Work Activities	1.1	1.0	1.0	1.0	2.0	2.8	2.2	2.9	1.9	2.4	3.6	3.3	1.5	2.3
Arts, Entertainment and Recreation	1.6	1.6	1.5	2.1	2.0	2.4	2.2	3.0	1.8	1.6	1.8	1.3	1.5	1.8
Fishing and Aquaculture	3.1	1.5	1.1	1.6	1.3	1.1	0.8	0.9	0.5	0.5	0.6	0.2	0.5	0.9
Water Supply; Sewerage, Waste Management and Remediation Activities	1.2	0.8	0.9	0.9	0.7	1.1	0.7	0.9	1.0	1.1	1.1	0.8	0.8	0.9
Electricity, Gas Steam and Air Condition Supply	0.3	0.5	0.8	0.6	0.6	0.4	0.4	0.5	0.3	0.4	0.4	1.6	0.6	0.8
Real Estate Activities	0.7	0.3	0.4	0.4	0.5	1.0	0.8	1.1	0.9	1.2	1.1	0.7	0.7	0.7
Mining and Quarrying	0.5	0.5	0.1	0.4	0.4	0.9	0.4	0.7	0.3	0.6	0.7	0.7	1.0	0.6
Activities of Extra-Territorial Organizations and Bodies	0.0	0.1	0.0	0.0	0.1	0.4	0.4	0.4	0.3	0.7	1.1	0.8	0.1	0.4
Forestry and Logging	0.3	0.6	0.3	0.3	0.4	0.4	0.3	1.0	0.3	0.2	0.2	0.1	0.6	0.3
Do Not Know or Not Stated	0.0	0.0	0.0	0.0	0.0	0.2	0.0	0.1	0.1	0.2	0.0	0.0	0.0	0.1

Source: Social Security Board

Notes: The total number of Active Insured Persons shown is not equal to the sum of the Insured Persons in each industry during the respective years due to persons working in different industries during the year. Classification of Industry as per International Standard Industrial Classification of Economic Activities Revision 4.

** Applies to persons age 60 - 64 years who have received a retirement benefit and all persons 65 years and older.

AIPs that are within the 2019 Average Weekly Insurable Earnings \$300 & Over Group are those who are Self-Employed and AIPs who only contributed to the \$300 & Over Group for the period January to June 2019.

Table 2.18
Active Insured Persons within the Tourism Industry by Year and District,
2015 - 2019

Tourism Industry	District						Total
	Belize	Cayo	Corozal	Orange Walk	Stann Creek	Toledo	
2019p	11,417	3,817	1,054	694	4,111	657	21,750
Accommodation for Visitors	4,550	1,691	199	151	3,042	314	9,947
Food and Beverage Serving Activities	4,277	1,208	410	399	790	156	7,240
Road Passenger Transport	113	162	98	119	81	151	724
Water Passenger Transport	322	0	6	0	19	5	352
Air Passenger Transport	774	3	0	0	0	0	777
Transport Equipment Rental	367	14	1	1	22	0	405
Travel Agencies and Other Reservation Services Activities	1,550	351	35	32	405	55	2,428
Cultural Activities	178	465	53	0	50	13	759
Sports and Recreational Activities	387	132	303	16	74	1	913
2018r	11,122	3,669	1,033	700	4,203	666	21,393
Accommodation for Visitors	4,490	1,726	196	170	3,058	306	9,946
Food and Beverage Serving Activities	4,052	1,173	405	359	768	144	6,901
Road Passenger Transport	111	188	108	133	72	151	763
Water Passenger Transport	324	0	5	0	18	3	350
Air Passenger Transport	748	2	0	0	0	4	754
Transport Equipment Rental	353	12	1	1	22	0	389
Travel Agencies and Other Reservation Services Activities	1,460	115	24	44	522	56	2,221
Cultural Activities	151	492	51	0	46	17	757
Sports and Recreational Activities	432	133	311	18	46	2	942
2017r	10,761	3,329	1,051	706	4,073	612	20,532
Accommodation for Visitors	4,609	1,580	189	178	2,998	305	9,859
Food and Beverage Serving Activities	3,648	1,050	401	344	697	130	6,270
Road Passenger Transport	103	154	109	145	75	151	737
Water Passenger Transport	329	0	5	0	20	3	357
Air Passenger Transport	748	2	0	0	0	1	751
Transport Equipment Rental	344	8	4	1	26	0	383
Travel Agencies and Other Reservation Services Activities	1,377	111	24	38	502	33	2,085
Cultural Activities	154	451	57	0	43	7	712
Sports and Recreational Activities	424	119	327	15	50	1	936
2016r	9,917	3,517	1,044	688	3,677	631	19,474
Accommodation for Visitors	4,333	1,607	206	169	2,789	310	9,414
Food and Beverage Serving Activities	3,030	1,087	383	335	682	138	5,655
Road Passenger Transport	89	164	121	129	74	147	724
Water Passenger Transport	331	0	6	0	18	3	358
Air Passenger Transport	743	2	0	0	0	0	745
Transport Equipment Rental	326	8	4	1	23	0	362
Travel Agencies and Other Reservation Services Activities	1,273	217	13	64	295	39	1,901
Cultural Activities	153	449	36	0	152	6	796
Sports and Recreational Activities	381	132	344	10	48	0	915
2015r	9,248	3,396	1,006	657	3,180	637	18,124
Accommodation for Visitors	4,232	1,699	253	155	2,271	334	8,944
Food and Beverage Serving Activities	2,723	943	350	291	589	124	5,020
Road Passenger Transport	65	182	109	149	67	140	712
Water Passenger Transport	373	0	6	0	21	2	402
Air Passenger Transport	663	2	0	0	0	0	665
Transport Equipment Rental	272	6	3	2	22	0	305
Travel Agencies and Other Reservation Services Activities	1,107	210	7	73	220	43	1,660
Cultural Activities	164	426	32	0	177	17	816
Sports and Recreational Activities	375	131	332	10	18	0	866

Source: Social Security Board

Tourism Category is based on United Nations World Tourism Organization classification.

Notes: The total number of Active Insured Persons shown is not equal to the sum of the Insured Persons in each industry during the respective years due to persons working in different industries during the year.

Table 2.19
Active Male Insured Persons within the Tourism Industry by Year and District,
2015 - 2019

Tourism Industry	District						Total
	Belize	Cayo	Corozal	Orange Walk	Stann Creek	Toledo	
2019p	6,327	2,106	497	278	2,386	412	12,006
Accommodation for Visitors	2,523	1,000	114	78	1,891	201	5,807
Food and Beverage Serving Activities	1,953	395	114	76	249	34	2,821
Road Passenger Transport	89	150	91	112	77	145	664
Water Passenger Transport	253	0	5	0	16	5	279
Air Passenger Transport	569	3	0	0	0	0	572
Transport Equipment Rental	272	12	0	0	20	0	304
Travel Agencies and Other Reservation Services Activities	1,052	271	22	14	290	42	1,691
Cultural Activities	98	340	38	0	31	12	519
Sports and Recreational Activities	161	63	142	4	46	1	417
2018r	6,201	1,987	470	299	2,528	437	11,922
Accommodation for Visitors	2,498	1,057	107	86	1,951	203	5,902
Food and Beverage Serving Activities	1,874	357	106	71	257	33	2,698
Road Passenger Transport	92	171	100	126	68	145	702
Water Passenger Transport	262	0	4	0	15	3	284
Air Passenger Transport	560	2	0	0	0	0	562
Transport Equipment Rental	274	9	0	0	19	0	302
Travel Agencies and Other Reservation Services Activities	987	68	14	25	374	45	1,513
Cultural Activities	78	372	33	0	27	16	526
Sports and Recreational Activities	172	59	145	3	29	1	409
2017r	6,009	1,818	482	307	2,524	390	11,530
Accommodation for Visitors	2,636	987	99	96	1,964	197	5,979
Food and Beverage Serving Activities	1,585	320	99	59	223	26	2,312
Road Passenger Transport	81	138	99	138	72	147	675
Water Passenger Transport	263	0	4	0	16	3	286
Air Passenger Transport	565	2	0	0	0	0	567
Transport Equipment Rental	259	7	3	0	24	0	293
Travel Agencies and Other Reservation Services Activities	913	72	17	19	381	24	1,426
Cultural Activities	83	338	37	0	26	6	490
Sports and Recreational Activities	168	47	164	3	31	1	414
2016r	5,458	1,894	481	301	2,258	403	10,795
Accommodation for Visitors	5,665	2,444	970	107	83	1,850	211
Food and Beverage Serving Activities	1,979	1,243	330	103	67	219	17
Road Passenger Transport	664	71	141	112	125	71	144
Water Passenger Transport	286	264	0	5	0	14	3
Air Passenger Transport	552	550	2	0	0	0	0
Transport Equipment Rental	275	249	6	3	0	17	0
Travel Agencies and Other Reservation Services Activities	1,275	848	146	12	36	204	29
Cultural Activities	572	74	340	25	0	127	6
Sports and Recreational Activities	397	148	53	166	1	29	0
2015r	5,168	1,887	498	330	1,907	418	10,208
Accommodation for Visitors	2,472	1,038	150	78	1,463	229	5,430
Food and Beverage Serving Activities	1,078	287	103	56	160	9	1,693
Road Passenger Transport	52	168	99	146	62	137	664
Water Passenger Transport	271	0	5	0	16	2	294
Air Passenger Transport	497	2	0	0	0	0	499
Transport Equipment Rental	207	5	2	0	20	0	234
Travel Agencies and Other Reservation Services Activities	750	138	7	56	143	32	1,126
Cultural Activities	78	319	24	0	152	17	590
Sports and Recreational Activities	168	44	165	1	10	0	388

Source: Social Security Board

Tourism Category is based on United Nations World Tourism Organization classification.

Notes: The total number of Active Insured Persons shown is not equal to the sum of the Insured Persons in each industry during the respective years due to persons working in different industries during the year.

Table 2.20
Active Female Insured Persons within the Tourism Industry by Year and District,
2015 - 2019

Tourism Industry	District						Total
	Belize	Cayo	Corozal	Orange Walk	Stann Creek	Toledo	
2019p	5,090	1,711	557	416	1,725	245	9,744
Accommodation for Visitors	2,027	691	85	73	1,151	113	4,140
Food and Beverage Serving Activities	2,324	813	296	323	541	122	4,419
Road Passenger Transport	24	12	7	7	4	6	60
Water Passenger Transport	69	0	1	0	3	0	73
Air Passenger Transport	205	0	0	0	0	0	205
Transport Equipment Rental	95	2	1	1	2	0	101
Travel Agencies and Other Reservation Services Activities	498	80	13	18	115	13	737
Cultural Activities	80	125	15	0	19	1	240
Sports and Recreational Activities	226	69	161	12	28	0	496
2018r	4,921	1,682	563	401	1,675	229	9,471
Accommodation for Visitors	1,992	669	89	84	1,107	103	4,044
Food and Beverage Serving Activities	2,178	816	299	288	511	111	4,203
Road Passenger Transport	19	17	8	7	4	6	61
Water Passenger Transport	62	0	1	0	3	0	66
Air Passenger Transport	188	0	0	0	0	4	192
Transport Equipment Rental	79	3	1	1	3	0	87
Travel Agencies and Other Reservation Services Activities	473	47	10	19	148	11	708
Cultural Activities	73	120	18	0	19	1	231
Sports and Recreational Activities	260	74	166	15	17	1	533
2017r	4,752	1,511	569	399	1,549	222	9,002
Accommodation for Visitors	1,973	593	90	82	1,034	108	3,880
Food and Beverage Serving Activities	2,063	730	302	285	474	104	3,958
Road Passenger Transport	22	16	10	7	3	4	62
Water Passenger Transport	66	0	1	0	4	0	71
Air Passenger Transport	183	0	0	0	0	1	184
Transport Equipment Rental	85	1	1	1	2	0	90
Travel Agencies and Other Reservation Services Activities	464	39	7	19	121	9	659
Cultural Activities	71	113	20	0	17	1	222
Sports and Recreational Activities	256	72	163	12	19	0	522
2016r	4,459	1,623	563	387	1,419	228	8,679
Accommodation for Visitors	1,889	637	99	86	939	99	3,749
Food and Beverage Serving Activities	1,787	757	280	268	463	121	3,676
Road Passenger Transport	18	23	9	4	3	3	60
Water Passenger Transport	67	0	1	0	4	0	72
Air Passenger Transport	193	0	0	0	0	0	193
Transport Equipment Rental	77	2	1	1	6	0	87
Travel Agencies and Other Reservation Services Activities	425	71	1	28	91	10	626
Cultural Activities	79	109	11	0	25	0	224
Sports and Recreational Activities	233	79	178	9	19	0	518
2015r	4,080	1,509	508	327	1,273	219	7,916
Accommodation for Visitors	1,760	661	103	77	808	105	3,514
Food and Beverage Serving Activities	1,645	656	247	235	429	115	3,327
Road Passenger Transport	13	14	10	3	5	3	48
Water Passenger Transport	102	0	1	0	5	0	108
Air Passenger Transport	166	0	0	0	0	0	166
Transport Equipment Rental	65	1	1	2	2	0	71
Travel Agencies and Other Reservation Services Activities	357	72	0	17	77	11	534
Cultural Activities	86	107	8	0	25	0	226
Sports and Recreational Activities	207	87	167	9	8	0	478

Source: Social Security Board

Tourism Category is based on United Nations World Tourism Organization classification.

Notes: The total number of Active Insured Persons shown is not equal to the sum of the Insured Persons in each industry during the respective years due to persons working in different industries during the year.

Table 2.21A
Active Insured Persons within the Tourism Industry by Employment Area, Nationality and Sex,
2015 - 2017

Employment Area	2015r			2016r			2017r		
	Nationality			Nationality			Nationality		
	Total	Belizean	Non-Belizean	Total	Belizean	Non-Belizean	Total	Belizean	Non-Belizean
Total	18,124	16,887	1,237	19,474	18,127	1,347	20,532	19,069	1,463
Corozal	1,092	1,055	37	1,113	1,070	43	1,116	1,071	45
Orange Walk	680	657	23	708	684	24	721	686	35
Belize	4,696	4,398	298	5,138	4,837	301	5,504	5,176	328
Caye Caulker	698	643	55	782	719	63	887	815	72
Ambergris Caye	4,522	4,146	376	4,691	4,304	387	5,255	4,851	404
Cayo	3,595	3,387	208	3,663	3,439	224	3,473	3,261	212
Stann Creek	1,744	1,615	129	2,060	1,905	155	2,236	2,081	155
Placencia	1,572	1,432	140	1,955	1,769	186	2,113	1,880	233
Toledo	616	581	35	587	561	26	554	525	29
Other Island	175	162	13	173	163	10	231	213	18
Female	7,916	7,367	549	8,679	8,069	610	9,002	8,384	618
Corozal	537	523	14	580	563	17	594	576	18
Orange Walk	343	336	7	396	386	10	406	390	16
Belize	2,274	2,138	136	2,508	2,381	127	2,680	2,557	123
Caye Caulker	420	387	33	445	407	38	506	466	40
Ambergris Caye	1,694	1,527	167	1,804	1,623	181	1,979	1,796	183
Cayo	1,598	1,503	95	1,678	1,571	107	1,564	1,463	101
Stann Creek	774	703	71	864	778	86	896	822	74
Placencia	562	512	50	658	594	64	757	677	80
Toledo	212	199	13	209	196	13	193	181	12
Other Island	58	56	2	63	61	2	73	69	4
Male	10,208	9,520	688	10,795	10,058	737	11,530	10,685	845
Corozal	555	532	23	533	507	26	522	495	27
Orange Walk	337	321	16	312	298	14	315	296	19
Belize	2,422	2,260	162	2,630	2,456	174	2,824	2,619	205
Caye Caulker	278	256	22	337	312	25	381	349	32
Ambergris Caye	2,828	2,619	209	2,887	2,681	206	3,276	3,055	221
Cayo	1,997	1,884	113	1,985	1,868	117	1,909	1,798	111
Stann Creek	970	912	58	1,196	1,127	69	1,340	1,259	81
Placencia	1,010	920	90	1,297	1,175	122	1,356	1,203	153
Toledo	404	382	22	378	365	13	361	344	17
Other Island	117	106	11	110	102	8	158	144	14

Source: Social Security Board

Tourism Category is based on United Nations World Tourism Organization classification.

Notes: The total number of Active Insured Persons shown is not equal to the sum of the Insured Persons in each industry during the respective years due to persons working in different industries during the year.

Table 2.21B
Active Insured Persons within the Tourism Industry by Employment Area, Nationality and Sex,
2018 - 2019

Employment Area	2018r			2019p		
	Nationality			Nationality		
	Total	Belizean	Non-Belizean	Total	Belizean	Non-Belizean
Total	21,393	19,927	1,466	21,750	20,317	1,433
Corozal	1,101	1,064	37	1,105	1,072	33
Orange Walk	725	687	38	718	679	39
Belize	5,475	5,164	311	5,693	5,356	337
Caye Caulker	968	901	67	1,083	1,018	65
Ambergris Caye	5,578	5,168	410	5,673	5,268	405
Cayo	3,839	3,613	226	4,024	3,779	245
Stann Creek	2,441	2,272	169	2,249	2,108	141
Placencia	2,061	1,828	233	2,181	1,975	206
Toledo	595	574	21	598	581	17
Other Island	240	222	18	221	205	16
Female	9,471	8,843	628	9,744	9,105	639
Corozal	592	578	14	579	567	12
Orange Walk	414	394	20	434	411	23
Belize	2,625	2,522	103	2,754	2,631	123
Caye Caulker	520	481	39	539	506	33
Ambergris Caye	2,162	1,961	201	2,240	2,032	208
Cayo	1,746	1,643	103	1,792	1,678	114
Stann Creek	1,034	954	80	1,020	943	77
Placencia	762	677	85	830	756	74
Toledo	202	194	8	214	209	5
Other Island	68	62	6	69	66	3
Male	11,922	11,084	838	12,006	11,212	794
Corozal	509	486	23	526	505	21
Orange Walk	311	293	18	284	268	16
Belize	2,850	2,642	208	2,939	2,725	214
Caye Caulker	448	420	28	544	512	32
Ambergris Caye	3,416	3,207	209	3,433	3,236	197
Cayo	2,093	1,970	123	2,232	2,101	131
Stann Creek	1,407	1,318	89	1,229	1,165	64
Placencia	1,299	1,151	148	1,351	1,219	132
Toledo	393	380	13	384	372	12
Other Island	172	160	12	152	139	13

Source: Social Security Board

Tourism Category is based on United Nations World Tourism Organization classification.

Notes: The total number of Active Insured Persons shown is not equal to the sum of the Insured Persons in each industry during the respective years due to persons working in different industries during the year.

Table 2.22
Number of Active Businesses within the Tourism Industry by Year and Business Area,
2015 - 2019

Tourism Industry	Business Area										
	Total	Corozal	Orange Walk	Belize	Caye Caulker	Ambergris Caye	Cayo	Stann Creek	Placencia	Toledo	Other Island
2019p	2,365	164	148	484	139	487	426	269	150	89	9
Accommodation for Visitors	594	23	16	75	60	149	98	68	79	19	7
Food and Beverage Serving Activities	1,234	109	94	283	62	222	239	136	44	44	1
Road Passenger Transport	162	25	24	28	0	4	27	34	4	16	0
Water Passenger Transport	12	1	0	3	1	3	0	0	2	2	0
Air Passenger Transport	9	0	0	7	0	1	1	0	0	0	0
Transport Equipment Rental	55	1	1	14	2	31	3	1	2	0	0
Travel Agencies and Other Reservation Services Activities	197	2	6	51	13	55	32	19	13	5	1
Cultural Activities	57	2	0	13	0	9	22	6	2	3	0
Sports and Recreational Activities	45	1	7	10	1	13	4	5	4	0	0
2018r	2,236	168	144	446	130	444	412	254	141	88	9
Accommodation for Visitors	566	24	16	67	56	132	100	66	78	20	7
Food and Beverage Serving Activities	1,168	114	90	258	58	204	225	132	41	45	1
Road Passenger Transport	166	24	24	31	1	4	32	31	5	14	0
Water Passenger Transport	12	1	0	3	1	5	0	0	1	1	0
Air Passenger Transport	10	0	0	7	0	1	1	0	0	1	0
Transport Equipment Rental	56	1	1	14	1	32	3	2	2	0	0
Travel Agencies and Other Reservation Services Activities	165	1	6	43	10	49	26	16	10	3	1
Cultural Activities	53	2	0	12	2	6	21	4	2	4	0
Sports and Recreational Activities	40	1	7	11	1	11	4	3	2	0	0
2017r	2,091	156	137	418	128	414	375	242	130	82	9
Accommodation for Visitors	547	21	15	66	52	127	96	67	74	22	7
Food and Beverage Serving Activities	1,073	105	85	231	59	192	205	119	37	39	1
Road Passenger Transport	160	24	24	28	1	3	31	29	4	16	0
Water Passenger Transport	12	1	0	4	1	3	0	1	1	1	0
Air Passenger Transport	10	0	0	7	0	1	1	0	0	1	0
Transport Equipment Rental	48	1	1	13	2	25	2	2	2	0	0
Travel Agencies and Other Reservation Services Activities	155	1	6	46	10	46	18	19	7	1	1
Cultural Activities	46	2	0	12	2	6	17	3	2	2	0
Sports and Recreational Activities	40	1	6	11	1	11	5	2	3	0	0
2016r	1,978	158	125	400	112	373	370	222	124	87	7
Accommodation for Visitors	520	25	16	69	46	117	90	59	69	24	5
Food and Beverage Serving Activities	1,010	101	78	212	54	172	203	111	36	42	1
Road Passenger Transport	160	26	20	27	1	4	32	31	3	16	0
Water Passenger Transport	12	1	0	4	1	4	0	0	1	1	0
Air Passenger Transport	9	0	0	7	0	1	1	0	0	0	0
Transport Equipment Rental	46	1	1	13	2	22	2	2	3	0	0
Travel Agencies and Other Reservation Services Activities	148	1	7	47	6	40	22	15	7	2	1
Cultural Activities	46	2	0	11	2	6	17	4	2	2	0
Sports and Recreational Activities	27	1	3	10	0	7	3	0	3	0	0
2015r	1,836	144	109	363	103	345	342	210	117	93	10
Accommodation for Visitors	509	26	15	68	38	120	90	54	65	25	8
Food and Beverage Serving Activities	891	87	64	188	49	142	173	110	34	43	1
Road Passenger Transport	145	25	19	20	2	2	30	26	4	17	0
Water Passenger Transport	14	1	0	5	2	4	0	0	1	1	0
Air Passenger Transport	9	0	0	7	0	1	1	0	0	0	0
Transport Equipment Rental	42	1	1	12	3	18	2	2	3	0	0
Travel Agencies and Other Reservation Services Activities	141	1	5	40	7	45	23	11	5	3	1
Cultural Activities	49	1	0	11	2	4	20	4	3	4	0
Sports and Recreational Activities	36	2	5	12	0	9	3	3	2	0	0

Source: Social Security Board

Tourism Category is based on United Nations World Tourism Organization classification

Table 2.23
Percentage of Tourism Active Insured Persons to Total Active Insured Persons by District and Year,
2015 - 2019

District	Registered Year				
	2015r	2016r	2017r	2018r	2019p
Tourism AIPs as a Percentage of Total AIPs	17.7	18.7	19.4	19.6	19.6
Corozal	11.4	12.3	13.1	13.0	13.9
Orange Walk	7.2	7.3	7.7	7.3	7.1
Belize	22.0	22.9	24.1	24.0	24.2
Cayo	13.4	13.5	12.7	13.7	13.7
Stann Creek	24.5	28.8	30.4	29.4	27.6
Toledo	14.9	14.2	13.8	16.3	18.1
Total Active Insured Persons (AIPs)	102,456	104,321	105,846	109,071	110,937
Corozal	8,842	8,455	8,053	7,939	7,576
Orange Walk	9,073	9,453	9,141	9,564	9,785
Belize	41,992	43,231	44,626	46,339	47,131
Cayo	25,297	25,981	26,216	26,861	27,924
Stann Creek	12,963	12,756	13,380	14,279	14,896
Toledo	4,289	4,445	4,430	4,089	3,625
Tourism Active Insured Persons (AIPs)	18,124	19,474	20,532	21,393	21,750
Corozal	1,006	1,044	1,051	1,033	1,054
Orange Walk	657	688	706	700	694
Belize	9,248	9,917	10,761	11,122	11,417
Cayo	3,396	3,517	3,329	3,669	3,817
Stann Creek	3,180	3,677	4,073	4,203	4,111
Toledo	637	631	612	666	657

Source: Social Security Board and Statistical Institute of Belize

Tourism Category is based on United Nations World Tourism Organization classification

Chart 5
Active Insured Persons in the Tourism Industry,
2015 - 2019

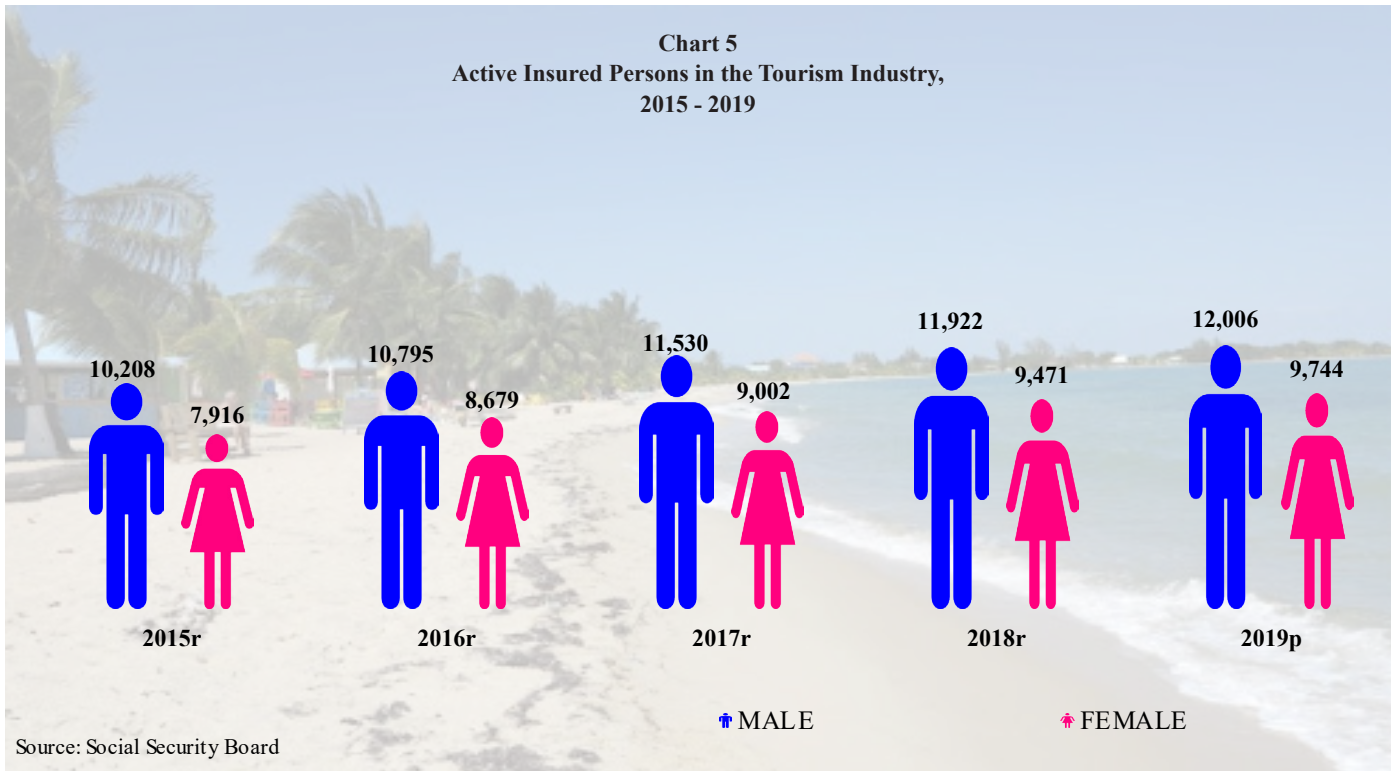


Table 2.24
Active Employers by District,
2015 - 2019

District	Year				
	2015	2016	2017	2018r	2019p
Total	11,069	11,327	11,552	11,750	11,940
Corozal	2,781	2,664	2,680	2,592	2,563
Orange Walk	1,470	1,522	1,465	1,517	1,496
Belize	3,169	3,365	3,542	3,678	3,820
Cayo	2,116	2,178	2,228	2,284	2,310
Stann Creek	1,072	1,124	1,167	1,205	1,249
Toledo	461	474	470	474	502

Source: Social Security Board

Table 2.25
Active Businesses by Industry,
2015 - 2019

Industry	Year				
	2015	2016	2017	2018r	2019p
Total	11,849	12,238	12,479	12,697	12,914
Agriculture	2,834	2,717	2,633	2,502	2,369
Wholesale and Retail Trade; Repair of Motor Vehicles and Motorcycles	1,709	1,830	1,923	1,974	1,986
Accommodation and Food Service Activities	1,366	1,498	1,578	1,684	1,783
Activities of Households as Employers; Undifferentiated Goods & Service Producing Activities of Households for Own Use	1,653	1,728	1,738	1,774	1,758
Construction	836	909	894	891	972
Manufacturing	616	649	666	687	736
Administrative and Support Service Activities	424	444	544	558	593
Other Service Activities	379	386	393	446	512
Professional, Scientific and Technical Activities	330	335	355	353	370
Transportation and Storage	323	345	355	367	365
Public Administration and Defence; Compulsory Social Security	323	328	318	332	333
Education	213	212	208	212	215
Human Health and Social Work Activities	176	195	201	209	214
Information and Communication	119	121	121	127	123
Financial and Insurance Activities	122	121	119	124	122
Arts, Entertainment and Recreation	86	88	102	105	113
Real Estate Activities	99	88	100	108	110
Water Supply; Sewerage, Waste Management and Remediation Activities	70	74	79	75	81
Fishing and Aquaculture	38	42	40	42	39
Forestry and Logging	56	53	40	45	37
Electricity, Gas, Steam and Air Condition Supply	17	19	18	28	30
Mining and Quarrying	36	31	28	28	27
Activities of Extra-Territorial Organizations and Bodies	19	19	19	19	20
Do Not Know or Not Stated	5	6	7	7	6

Source: Social Security Board

Note: Classification of Industry as per International Standard Industrial Classification of Economic Activities Revision 4.

Table 2.26
Active Businesses and its Percentage Distribution by District,
2015 - 2019

District	Year									
	2015		2016		2017		2018r		2019p	
	Quantity	%	Quantity	%	Quantity	%	Quantity	%	Quantity	%
Total	11,849	100.0	12,238	100.0	12,479	100.0	12,697	100.0	12,914	100.0
Corozal	2,834	23.9	2,735	22.3	2,784	22.3	2,673	21.1	2,652	20.5
Orange Walk	1,583	13.4	1,647	13.5	1,582	12.7	1,635	12.9	1,601	12.4
Belize	3,334	28.1	3,571	29.2	3,767	30.2	3,900	30.7	4,078	31.6
Cayo	2,452	20.7	2,535	20.7	2,560	20.5	2,646	20.8	2,673	20.7
Stann Creek	1,154	9.7	1,223	10.0	1,262	10.1	1,322	10.4	1,348	10.4
Toledo	492	4.2	527	4.3	524	4.2	521	4.1	562	4.4

Source: Social Security Board

Table 2.27
Active Businesses by Number of Employees and Business Type,
2015 - 2019

Business Type	Number of Employees	Year									
		2015		2016		2017		2018r		2019p	
		Quantity	%	Quantity	%	Quantity	%	Quantity	%	Quantity	%
Total		11,849	100.0	12,238	100.0	12,479	100.0	12,697	100.0	12,914	100.0
Micro	1 to 5	7,404	62.5	7,814	63.9	8,074	64.7	8,402	66.2	8,554	66.2
Small	6 to 20	3,324	28.1	3,302	27.0	3,279	26.3	3,154	24.8	3,194	24.7
Medium	21 to 99	912	7.7	909	7.4	910	7.3	908	7.2	947	7.3
Large	100 +	209	1.8	213	1.7	216	1.7	233	1.8	219	1.7

Source: Social Security Board

BENEFITS

This section presents information on social security benefits, Non-Contributory Pension (NCP), and appeals. The primary source of benefits data is the Social Security Board's (SSB) databases. Data on the Mid-Year Population Estimates are obtained from the SIB.

Social Security Coverage – includes employed persons aged 14 to 64 years, including public officers and self-employed persons. Persons aged 65 or older who engage in insurable employment are only covered for work injury benefits as of May 7, 1988 and a reduced contribution of BZ\$2.60 weekly is paid only by the Employer. Not covered are persons engaged in casual labour, persons employed for less than eight (8) hours in a contribution week, and military personnel. Coverage was later expanded to include the Self-Employed and Non-Contributory Pensioners.

Unemployed persons who have met the requirements for voluntary coverage are only covered for Retirement, Survivors' Benefits and Funeral Grant due to natural causes.

Appeals – Legal Services, SSB, oversees the logistical arrangement for all appeals to be heard and further manages the process for appellants to be duly informed of decisions of the tribunal hearing.

Table 3.1
Benefits Expenditure by Branch/Benefit,
2015 - 2019
(BZ\$)

Branch/Benefit	Year				
	2015	2016	2017	2018r	2019p
Total	\$77,192,346	\$79,986,561	\$86,324,696	\$90,449,763	\$97,805,955
Short Term	\$13,195,481	\$12,843,089	\$15,232,967	\$14,356,574	\$15,566,628
Sickness	\$8,674,700	\$8,619,821	\$10,656,948	\$9,348,033	\$10,536,091
Maternity Allowance	\$3,516,484	\$3,268,705	\$3,604,593	\$4,013,176	\$4,081,172
Maternity Grant	\$1,004,297	\$954,563	\$971,426	\$995,366	\$949,365
Long Term	\$39,686,805	\$45,082,437	\$49,859,411	\$54,032,583	\$59,987,914
Retirement	\$26,607,593	\$31,085,207	\$35,453,108	\$39,405,171	\$44,996,666
Survivors	\$5,597,329	\$6,781,936	\$7,159,864	\$7,627,724	\$7,900,147
Invalidity	\$3,509,176	\$3,448,671	\$3,588,154	\$3,630,584	\$4,003,587
Funeral Grant (NC)	\$1,218,468	\$1,261,720	\$1,360,915	\$1,359,717	\$1,333,651
Non-Contributory Pensions	\$2,754,239	\$2,504,903	\$2,297,370	\$2,009,387	\$1,753,862
Employment Injury	\$4,283,748	\$3,813,426	\$3,308,764	\$3,662,783	\$3,368,209
Injury Benefit	\$2,517,866	\$2,569,830	\$2,468,525	\$2,348,050	\$2,436,384
Disablement Grant	\$496,042	\$551,055	\$518,250	\$483,701	\$414,107
Funeral Grant (EI)	\$4,500	\$1,500	\$1,500	\$9,000	\$9,000
APV Disablement and Death	\$1,265,340	\$691,041	\$320,489	\$822,032	\$508,718
Disablement and Death Pension	\$2,089,371	\$2,106,544	\$2,100,889	\$2,092,614	\$2,176,740
National Health Insurance	\$17,936,941	\$16,141,065	\$15,822,665	\$16,305,209	\$16,706,465

Source: Social Security Board

Notes: National Health Insurance Expenditure refers to all payments made to Primary Care Providers.

NC - Natural Causes

EI - Employment Injury

APV - Actuarial Present Value

Table 3.2
New Claims Allowed by Branch/Benefit,
2015 - 2019

Branch/Benefit	Year				
	2015	2016	2017	2018r	2019p
Total	40,091	40,325	48,486	42,649	43,772
Short Term	35,546	35,612	43,854	38,002	39,146
Sickness	30,927	31,173	39,301	33,204	34,550
Maternity Allowance	1,282	1,276	1,352	1,466	1,439
Maternity Grant	3,337	3,163	3,201	3,332	3,157
Long Term	2,333	2,578	2,683	2,759	3,002
Retirement	981	1,118	1,181	1,300	1,554
Survivors	323	420	390	371	379
Invalidity	110	111	108	88	84
Funeral Grant (NC)	919	929	1,004	1,000	985
Employment Injury	2,212	2,135	1,949	1,888	1,624
Injury	1,923	1,841	1,789	1,745	1,492
Disablement	278	286	147	129	120
Death Benefit	8	7	12	13	6
Funeral Grant (EI)	3	1	1	1	6

Source: Social Security Board

Notes: Retirement, Survivors', Invalidity, Disablement and Death Benefits include those that have received either a pension or a grant.

NC - Natural Causes

EI - Employment Injury

Table 3.3
Benefit Recipients by Branch/Benefit,
2015 - 2019

Branch/Benefit	Year				
	2015	2016	2017	2018r	2019p
Total	41,412	41,486	47,680	44,374	45,602
Short Term	26,110	25,857	31,424	27,582	28,551
Sickness	21,534	21,462	26,913	22,813	23,987
Maternity Allowance	1,263	1,251	1,329	1,451	1,422
Maternity Grant	3,313	3,144	3,182	3,318	3,142
Long Term	12,574	12,976	13,674	14,237	14,748
Retirement	5,673	6,228	6,786	7,418	8,282
Survivors	3,061	3,190	3,442	3,426	3,359
Invalidity	413	418	428	534	552
Funeral Grant (NC)	914	926	1,000	996	980
Non-Contributory Pensions	2,513	2,214	2,018	1,863	1,575
Employment Injury	2,728	2,653	2,582	2,555	2,303
Injury	1,861	1,778	1,725	1,689	1,457
Disablement	586	608	598	596	595
Death Benefit	278	266	258	269	245
Funeral Grant (EI)	3	1	1	1	6

Source: Social Security Board

Notes: Retirement, Survivors', Invalidity, Disablement and Death Benefits include those that have received either a pension or a grant.

NC - Natural Causes

EI - Employment Injury

Table 3.4
Total Number of Sickness Benefit Days Claimed within each Sickness Benefit Days Group,
2015 - 2019

Sickness Benefit Days Group	Year				
	2015	2016	2017	2018r	2019p
Total	292,997	289,420	352,862	303,950	312,727
1	2,025	2,086	2,218	2,565	2,443
2	9,744	10,666	10,576	12,058	11,966
3	17,808	17,463	18,903	19,608	19,413
4 - 7	54,368	54,348	82,217	53,597	58,674
8 - 14	42,369	40,784	61,624	41,577	46,439
15 - 21	24,173	21,135	25,208	22,197	23,443
22 - 28	12,903	12,356	13,956	12,534	12,309
29 - 35	17,249	17,030	17,649	17,222	17,371
36 - 42	9,388	8,905	10,217	8,860	9,968
43 - 49	9,604	7,849	8,883	8,822	9,969
50 - 56	6,590	6,838	6,506	6,520	6,864
57 - 63	9,185	9,265	9,409	10,640	10,266
64 - 70	5,517	7,305	6,552	6,445	7,466
71 - 77	4,006	5,979	5,472	5,525	5,830
78 - 84	3,396	4,031	5,164	4,852	5,527
85 - 91	4,234	4,256	4,409	5,025	5,294
92 - 98	5,205	5,192	4,353	4,988	6,787
99 - 105	3,343	2,760	2,955	4,593	4,293
106 - 112	2,829	2,606	1,846	3,066	2,191
113 - 119	1,275	2,313	2,775	3,363	2,881
120 - 126	2,707	3,439	2,800	2,591	3,335
127 - 133	1,945	2,865	3,265	2,999	2,992
134 - 140	1,775	2,187	2,620	2,063	2,052
141 - 147	1,438	1,591	1,446	1,140	3,033
148 - 156	3,052	1,826	2,610	3,361	3,053
157 - 234	36,869	34,345	39,229	37,739	28,868

Source: Social Security Board

Table 3.5
Mean Benefit Payment by Sickness Benefit Days Group,
2015 - 2019
(BZ\$)

Sickness Benefit Days Group	Year				
	2015	2016	2017	2018r	2019p
1	\$32	\$32	\$32	\$32	\$35
2	\$62	\$63	\$64	\$65	\$70
3	\$92	\$94	\$95	\$96	\$104
4 - 7	\$158	\$161	\$163	\$162	\$176
8 - 14	\$311	\$312	\$310	\$322	\$344
15 - 21	\$513	\$534	\$534	\$539	\$579
22 - 28	\$739	\$752	\$760	\$785	\$824
29 - 35	\$943	\$980	\$992	\$1,009	\$1,076
36 - 42	\$1,179	\$1,160	\$1,194	\$1,237	\$1,341
43 - 49	\$1,400	\$1,439	\$1,476	\$1,445	\$1,553
50 - 56	\$1,624	\$1,638	\$1,642	\$1,608	\$1,782
57 - 63	\$1,795	\$1,823	\$1,882	\$1,869	\$2,012
64 - 70	\$2,093	\$2,024	\$2,177	\$2,008	\$2,199
71 - 77	\$2,224	\$2,355	\$2,201	\$2,400	\$2,498
78 - 84	\$2,449	\$2,374	\$2,563	\$2,641	\$2,625
85 - 91	\$2,793	\$2,661	\$2,690	\$2,753	\$2,924
92 - 98	\$2,904	\$2,870	\$2,836	\$2,862	\$3,115
99 - 105	\$3,186	\$3,303	\$3,168	\$3,120	\$3,336
106 - 112	\$3,079	\$3,032	\$3,586	\$3,564	\$3,662
113 - 119	\$3,951	\$3,616	\$3,788	\$3,777	\$3,866
120 - 126	\$3,575	\$3,652	\$3,767	\$3,961	\$4,323
127 - 133	\$3,742	\$4,094	\$4,067	\$4,102	\$4,385
134 - 140	\$3,730	\$4,600	\$4,265	\$4,628	\$3,798
141 - 147	\$4,990	\$4,806	\$4,715	\$4,772	\$4,565
148 - 156	\$4,728	\$4,541	\$4,559	\$4,918	\$4,960
157 - 234	\$6,080	\$5,800	\$5,862	\$5,981	\$6,296
Mean Annual Payment (BZ\$)	\$282	\$281	\$274	\$282	\$300

Source: Social Security Board

Note: Mean annual payment refers to the average cost per allowed claim.

Table 3.6
Sickness Benefit by Selected Characteristics,
2015 - 2019

Selected Characteristics	Year				
	2015	2016	2017	2018r	2019p
Number of New Claims Allowed	30,927	31,173	39,301	33,204	34,550
Age Group					
14 - 19	521	491	625	446	440
20 - 24	4,364	4,477	5,681	4,740	5,038
25 - 29	6,478	6,376	8,083	6,815	7,027
30 - 34	5,568	5,595	7,139	6,241	6,472
35 - 39	4,540	4,383	5,665	4,754	5,055
40 - 44	3,480	3,532	4,432	3,697	3,817
45 - 49	2,711	2,860	3,489	2,890	3,010
50 - 54	1,984	2,026	2,464	2,173	2,204
55 - 64	1,281	1,433	1,723	1,448	1,487
Average Days Claimed	6	6	6	6	6
Age Group					
14 - 19	6	7	6	5	6
20 - 24	5	5	5	5	5
25 - 29	6	5	5	5	5
30 - 34	6	6	6	6	5
35 - 39	6	6	6	6	6
40 - 44	7	6	6	6	6
45 - 49	7	7	7	7	8
50 - 54	8	8	8	8	8
55 - 64	9	9	8	9	9
Sex	30,927	31,173	39,301	33,204	34,550
Male	16,190	16,013	20,583	16,603	17,386
Female	14,737	15,160	18,718	16,601	17,164

Source: Social Security Board

Note: Average days claimed refers to the average days per allowed claim.

Table 3.7
Sickness Benefit Claims Paid by Industry,
2015 - 2019

Industry	Year				
	2015	2016	2017	2018r	2019p
Total	30,927	31,173	39,301	33,204	34,550
Public Administration and Defence; Compulsory Social Security	7,029	7,668	10,153	8,802	8,421
Wholesale and Retail Trade; Repair of Motor Vehicles and Motorcycles	3,668	3,596	4,529	3,478	3,501
Accommodation and Food Service Activities	2,385	2,328	3,202	2,504	2,710
Manufacturing	2,507	2,493	3,138	2,355	2,484
Administrative and Support Service Activities	1,378	1,537	1,841	1,748	2,264
Information and Communication	1,348	1,707	1,895	1,764	1,999
Education	1,538	1,641	2,318	1,900	1,892
Financial and Insurance Activities	1,428	1,528	1,794	1,686	1,818
Professional, Scientific and Technical Activities	1,435	1,325	1,326	1,269	1,500
Human Health and Social Work Activities	1,361	1,421	1,580	1,500	1,454
Construction	886	882	1,328	1,092	1,275
Agriculture	1,998	1,368	1,669	1,190	1,272
Transportation and Storage	905	927	1,144	1,045	984
Arts, Entertainment and Recreation	714	652	773	658	603
Other Service Activities	368	445	515	503	577
Activities of Households as Employers; Undifferentiated Goods & Service Producing Activities of Households for Own Use	360	403	563	426	439
Water Supply; Sewerage, Waste Management and Remediation Activities	311	294	364	308	344
Electricity, Gas, Steam and Air Condition Supply	277	282	323	299	300
Activities of Extra-Territorial Organizations and Bodies	160	154	240	240	288
Mining and Quarrying	162	120	143	124	135
Real Estate Activities	98	150	156	149	133
Fishing and Aquaculture	561	195	237	113	103
Forestry and Logging	49	54	68	51	49
Do Not Know or Not Stated	1	3	2	0	5

Source: Social Security Board

Notes: Classification of Industry as per International Standard Industrial Classification of Economic Activities Revision 4.

Table 3.8
Maternity Allowance by Selected Characteristics,
2015 - 2019

Selected Characteristics	Year				
	2015	2016	2017	2018r	2019p
Claims Allowed	1,282	1,276	1,352	1,466	1,439
Age Group					
14 - 19	34	33	37	40	40
20 - 24	321	337	347	354	316
25 - 29	455	433	434	500	479
30 - 34	302	295	354	349	417
35 - 39	137	144	158	177	149
40 - 44	32	31	20	45	36
45 - 64	1	3	2	1	2
Weeks Claimed					
< 14 Weeks	59	47	55	64	71
14 Weeks	1,223	1,229	1,297	1,402	1,368
Mean Annual Payment (BZ\$)	\$2,696	\$2,674	\$2,771	\$2,790	\$2,840
Age Group					
14 - 19	\$1,919	\$1,959	\$1,878	\$2,280	\$2,280
20 - 24	\$2,424	\$2,410	\$2,551	\$2,559	\$2,629
25 - 29	\$2,815	\$2,721	\$2,819	\$2,833	\$2,906
30 - 34	\$2,870	\$2,912	\$2,923	\$2,960	\$2,910
35 - 39	\$2,687	\$2,776	\$2,973	\$2,881	\$3,016
40 - 44	\$3,037	\$2,934	\$2,933	\$2,955	\$2,814
45 - 64	\$1,008	\$2,309	\$2,274	\$1,008	\$4,084

Source: Social Security Board

Note: Mean annual payment refers to the average cost per allowed claim.

Table 3.9
Maternity Grants Paid by Age Group and Sex,
2015 - 2019

Age Group	Year				
	2015	2016	2017	2018r	2019p
Total	3,337	3,163	3,201	3,332	3,157
14 - 19	86	68	88	89	80
20 - 24	809	821	792	800	741
25 - 29	1,079	964	1,007	1,037	951
30 - 34	700	697	734	755	762
35 - 39	397	373	376	408	373
40 - 44	166	141	122	159	161
45 - 49	53	57	47	40	52
50 - 54	23	33	25	32	20
55 - 59	18	8	9	8	11
60+	6	1	1	4	6
Male*	1,960	1,847	1,820	1,851	1,683
14 - 19	50	36	51	54	39
20 - 24	464	481	438	447	409
25 - 29	594	525	565	533	472
30 - 34	379	381	370	394	338
35 - 39	244	221	217	226	214
40 - 44	130	107	99	115	124
45 - 49	52	54	45	39	50
50 - 54	23	33	25	31	20
55 - 59	18	8	9	8	11
60+	6	1	1	4	6
Female	1,377	1,316	1,381	1,481	1,474
14 - 19	36	32	37	35	41
20 - 24	345	340	354	353	332
25 - 29	485	439	442	504	479
30 - 34	321	316	364	361	424
35 - 39	153	152	159	182	159
40 - 44	36	34	23	44	37
45 - 49	1	3	2	1	2
50 - 54	0	0	0	1	0
55 - 59	0	0	0	0	0
60+	0	0	0	0	0

Source: Social Security Board

Note: *Maternity grants are payable to male insured persons who present proof of paternity. A grant is not paid to fathers in respect of a child for whom an insured mother has claimed.

Table 3.10
Pensions by Recipients at Year End and Expenditure,
2015 - 2019

Pension	Year				
	2015	2016	2017	2018r	2019p
Total Recipient	11,568	12,048	12,527	13,141	13,613
Contributory Pensioners	9,055	9,834	10,509	11,278	12,038
Retirement	5,285	5,797	6,312	6,957	7,685
Invalidity	413	449	480	500	489
Survivors'	2,614	2,853	2,987	3,074	3,087
Disablement	465	469	472	478	532
Death	278	266	258	269	245
Non-Contributory Pensioners	2,513	2,214	2,018	1,863	1,575
Total Expenditure (BZ\$)	\$37,702,512	\$42,652,368	\$47,776,838	\$52,035,039	\$57,531,834
Contributory Pensioners	\$34,948,273	\$40,147,464	\$45,479,468	\$50,025,652	\$55,709,991
Retirement	\$25,341,254	\$29,596,788	\$33,933,080	\$37,767,713	\$42,861,371
Invalidity	\$2,633,990	\$2,857,094	\$3,197,738	\$3,380,457	\$3,602,840
Survivors'	\$4,883,658	\$5,587,038	\$6,247,760	\$6,784,868	\$7,070,143
Disablement	\$1,356,723	\$1,442,446	\$1,453,451	\$1,446,074	\$1,546,847
Death	\$732,647	\$664,098	\$647,438	\$646,540	\$628,790
Non-Contributory Pensioners	\$2,754,239	\$2,504,904	\$2,297,370	\$2,009,387	\$1,821,844

Source: Social Security Board

Note: Due to rounding total expenditure may not add up.

Table 3.11
Retirement Pensions Awarded During the Year by Age, Sex and Mean Annual Payment,
2015 - 2019

Age	Year				
	2015	2016	2017	2018r	2019p
Total	591	645	696	799	931
60	274	276	300	392	430
61	97	114	122	118	165
62	45	59	52	72	58
63	32	31	39	32	51
64	19	18	31	27	32
65	89	108	106	111	133
66	27	26	31	37	45
67	2	7	6	7	7
68	2	2	4	0	3
69+	4	4	5	3	7
Male	354	415	439	512	596
60	141	163	176	220	256
61	60	75	73	86	111
62	27	36	30	50	44
63	20	23	28	19	38
64	16	15	19	21	16
65	64	78	78	82	92
66	20	15	23	26	27
67	2	5	5	6	5
68	2	2	4	0	2
69+	2	3	3	2	5
Female	237	230	257	287	335
60	133	113	124	172	174
61	37	39	49	32	54
62	18	23	22	22	14
63	12	8	11	13	13
64	3	3	12	6	16
65	25	30	28	29	41
66	7	11	8	11	18
67	0	2	1	1	2
68	0	0	0	0	1
69+	2	1	2	1	2
Mean Annual Payment (BZ\$)					
Total	\$5,928	\$6,398	\$6,516	\$5,247	\$6,319
Male	\$5,976	\$6,283	\$6,445	\$5,222	\$6,463
Female	\$5,859	\$6,604	\$6,639	\$5,297	\$6,046

Source: Social Security Board

Note: Mean annual payment refers to the average annual cost per allowed claim.

Table 3.12
Retirement Grants Awarded by Age, Sex and Mean Annual Payment,
2015 - 2019

Age	Year				
	2015	2016	2017	2018r	2019p
Total	415	431	458	461	609
60	144	173	122	163	231
61	51	68	76	64	89
62	37	35	46	44	45
63	23	24	35	28	33
64	38	21	31	27	28
65	64	41	52	64	78
66	20	27	36	18	28
67	13	16	21	17	22
68	3	9	12	10	13
69+	22	17	27	26	42
Male	274	270	287	294	351
60	93	96	65	86	109
61	26	43	44	38	45
62	19	22	31	29	22
63	18	12	21	19	22
64	26	16	17	19	20
65	48	28	41	54	54
66	13	21	27	14	22
67	12	14	15	11	12
68	2	7	7	5	11
69+	17	11	19	19	34
Female	141	161	171	167	258
60	51	77	57	77	122
61	25	25	32	26	44
62	18	13	15	15	23
63	5	12	14	9	11
64	12	5	14	8	8
65	16	13	11	10	24
66	7	6	9	4	6
67	1	2	6	6	10
68	1	2	5	5	2
69+	5	6	8	7	8
Mean Annual Payment (BZ\$)					
Total	\$3,348	\$3,430	\$3,150	\$3,575	\$3,548
Male	\$3,624	\$3,568	\$3,315	\$3,905	\$3,823
Female	\$2,798	\$3,198	\$2,875	\$2,994	\$3,174

Source: Social Security Board

Note: Mean annual payment refers to the average cost per allowed claim.

Table 3.13
'Invalidity Pensioners at Year End by Age Group and Sex,
2015 - 2019

Age Group	Year				
	2015	2016	2017	2018r	2019p
Total	413	449	480	500	532
< 20	0	0	0	0	0
20 - 24	0	0	1	1	0
25 - 29	1	1	4	7	3
30 - 34	7	10	10	10	8
35 - 39	22	22	25	26	14
40 - 44	44	47	55	61	30
45 - 49	80	90	99	105	65
50 - 54	104	118	132	142	118
55 - 59	120	128	123	119	149
60 - 64	35	0	31	29	117
65+	0	0	0	0	28
Male	225	245	259	271	290
< 20	0	0	0	0	0
20 - 24	0	0	1	1	0
25 - 29	1	1	4	7	3
30 - 34	4	5	6	7	7
35 - 39	14	16	16	15	8
40 - 44	28	29	35	37	18
45 - 49	44	49	48	54	42
50 - 54	51	58	68	72	61
55 - 59	65	71	65	62	74
60 - 64	18	16	16	16	61
65+	0	0	0	0	16
Female	188	204	221	229	242
< 20	0	0	0	0	0
20 - 24	0	0	0	0	0
25 - 29	0	0	0	0	0
30 - 34	3	5	4	3	1
35 - 39	8	6	9	11	6
40 - 44	16	18	20	24	12
45 - 49	36	41	51	51	23
50 - 54	53	60	64	70	57
55 - 59	55	57	58	57	75
60 - 64	17	17	15	13	56
65+	0	0	0	0	12

Source: Social Security Board

Note: 'Includes all persons declared by a medical board as permanently "incapable to work" as a result from a specific disease or bodily or mental disablement and are receiving a Social Security Invalidity Pension.

Table 3.14
¹Spouses Receiving Survivors' Pension at Year End by Sex and Mean Annual Payment,
2015 - 2019

Selected Characteristics	Year				
	2015	2016	2017	2018r	2019p
Sex					
Total	1,234	1,325	1,384	1,451	1,486
Male	18	16	13	14	12
Female	1,216	1,309	1,371	1,437	1,474
Mean Annual Payment (BZ\$)	\$3,060	\$3,275	\$3,420	\$3,486	\$3,556

Source: Social Security Board

Notes: Mean annual payment refers to the average annual cost per allowed claim.

¹Includes all persons classified as spouses in receipt of a Social Security Survivors' Pension.

Table 3.15
Children Awarded Survivors' Pension During the Year by Age Group,
Sex and Mean Annual Payment,
2015 - 2019

Age Group	Year				
	2015	2016	2017	2018r	2019p
Total	172	202	180	194	210
00 - 04	28	40	24	25	35
05 - 09	44	56	43	36	41
10 - 14	46	69	63	64	63
15 - 16	22	20	24	24	23
17 - 21	25	14	23	37	45
22+	7	3	3	8	3
Male	77	101	86	104	116
00 - 04	14	18	12	12	21
05 - 09	19	36	24	20	23
10 - 14	19	30	31	33	37
15 - 16	12	8	7	15	10
17 - 21	9	6	9	21	25
22+	4	3	3	3	0
Female	95	101	94	90	94
00 - 04	14	22	12	13	14
05 - 09	25	20	19	16	18
10 - 14	27	39	32	31	26
15 - 16	10	12	17	9	13
17 - 21	16	8	14	16	20
22+	3	0	0	5	3
Mean Annual Payment (BZ\$)	\$1,776	\$1,773	\$1,780	\$1,844	\$1,388

Source: Social Security Board

Note: Mean annual payment refers to the average annual cost per allowed claim.

Table 3.16
'Children Receiving Survivors' Pension at Year End
by Age Group, Sex and Mean Annual Payment,
2015 - 2019

Age Group	Year				
	2015	2016	2017	2018r	2019p
Total	1,381	1,464	1,541	1,589	1,535
00 - 04	67	87	86	82	85
05 - 09	250	264	280	275	266
10 - 14	469	508	510	520	529
15 - 16	238	251	262	265	436
17 - 21	259	309	364	386	177
22+	98	45	39	61	42
Male	696	744	786	812	805
00 - 04	32	41	44	39	42
05 - 09	137	150	154	144	137
10 - 14	233	250	259	276	295
15 - 16	135	130	114	126	219
17 - 21	115	147	191	198	87
22+	44	26	24	29	25
Female	685	720	755	777	730
00 - 04	35	46	42	43	43
05 - 09	113	114	126	131	129
10 - 14	236	258	251	244	234
15 - 16	103	121	148	139	217
17 - 21	144	162	173	188	90
22+	54	19	15	32	17
Mean Annual Payment (BZ\$)	\$1,548	\$1,591	\$1,651	\$1,717	\$1,668

Source: Social Security Board

Notes: Mean annual payment refers to the average annual cost per orphan.

¹Includes all persons classified as dependent children as per Act in receipt of a Social Security Survivors' Benefit.

Table 3.17
'Dead Insured Persons by Number of Surviving Orphans and Year,
2015 - 2019

Number of Orphans	Year				
	2015	2016	2017	2018r	2019p
Total	172	202	180	194	210
1	38	41	36	21	49
2	64	60	36	54	42
3	27	42	48	45	66
4	24	32	32	47	28
5	0	15	15	9	25
6	12	12	6	8	0
7+	7	0	7	10	0

Source: Social Security Board

Note: 'Dead Insured Persons who met the requirements to receive a Retirement or Invalidation Pension.

Table 3.18
'Dead Insured Persons by Number of Surviving Spouses
and Parents, Sex and Year,
2015 - 2019

Sex	Year				
	2015	2016	2017	2018r	2019p
Total Spouses	125	153	134	149	159
Male	0	0	0	2	0
Female	125	153	134	147	159
Total Parents	13	7	2	2	7
1	12	7	2	2	6
2	1	0	0	0	1
Male	6	2	1	2	6
1	5	2	1	2	5
2	1	0	0	0	1
Female	7	5	1	0	1
1	7	5	1	0	1
2	0	0	0	0	0

Source: Social Security Board

Note: 'Dead Insured Persons who met the requirements to receive a Retirement or Invalidation Pension.

Table 3.19
Survivors' Grants Awarded to Beneficiaries by
Age Group, Sex and Mean Annual Payment,
2015 - 2019

Age Group	Year				
	2015	2016	2017	2018r	2019p
Total	318	337	312	340	271
<20	196	192	188	198	165
20 - 29	26	24	21	34	13
30 - 39	34	36	31	34	33
40 - 49	23	39	38	38	23
50 - 59	19	33	25	28	29
60+	20	13	9	8	8
Male	121	124	118	113	82
<20	107	102	97	109	76
20 - 29	4	4	3	3	0
30 - 39	2	7	5	0	1
40 - 49	2	5	8	0	2
50 - 59	4	4	4	0	1
60+	2	2	1	1	2
Female	197	213	194	227	189
<20	89	90	91	89	89
20 - 29	22	20	18	31	13
30 - 39	32	29	26	34	32
40 - 49	21	34	30	38	21
50 - 59	15	29	21	28	28
60+	18	11	8	7	6
Mean Annual Payment (BZ\$)	\$5,403	\$6,671	\$5,637	\$6,005	\$6,390

Source: Social Security Board

Note: Mean annual payment refers to the average cost per allowed claim.

Table 3.20
Disablement Pensions Awarded During the Year by Degree of Disability
in Percent, Sex and Mean Annual Payment,
2015 - 2019

Degree of Disability (%)	Year				
	2015	2016	2017	2018r	2019p
Total	17	15	13	14	22
25.00 - 29.99	5	3	1	3	2
30.00 - 39.99	8	6	6	4	13
40.00 - 49.99	1	2	2	4	3
50.00 - 59.99	1	1	1	0	2
60+	2	3	3	3	2
Male	17	13	13	14	21
25.00 - 29.99	5	3	1	3	1
30.00 - 39.99	8	6	6	4	13
40.00 - 49.99	1	2	2	4	3
50.00 - 59.99	1	0	1	0	2
60+	2	2	3	3	2
Female	0	2	0	0	1
25.00 - 29.99	0	0	0	0	1
30.00 - 39.99	0	0	0	0	0
40.00 - 49.99	0	0	0	0	0
50.00 - 59.99	0	1	0	0	0
60+	0	1	0	0	0
Mean Annual Payment (BZ\$)	\$2,802	\$3,895	\$3,783	\$3,565	\$3,321

Source: Social Security Board

Note: Mean annual payment refers to the average annual cost per allowed claim.

Table 3.21
¹Disablement Pensions at Year End by Selected Characteristics,
2015 - 2019

Age Group	Year				
	2015	2016	2017	2018r	2019p
Total	465	469	472	479	489
< 20	2	0	0	0	0
20 - 29	31	27	30	23	27
30 - 39	69	64	54	62	63
40 - 49	117	107	107	103	95
50 - 59	125	138	143	136	141
60+	121	133	138	155	163
Male	438	440	443	452	461
< 20	2	0	0	0	0
20 - 29	30	27	30	23	27
30 - 39	66	59	50	58	60
40 - 49	114	104	104	101	91
50 - 59	115	128	132	128	133
60+	111	122	127	142	150
Female	27	29	29	27	28
< 20	0	0	0	0	0
20 - 29	1	0	0	0	0
30 - 39	3	5	4	4	3
40 - 49	3	3	3	2	4
50 - 59	10	10	11	8	8
60+	10	11	11	13	13
Mean Annual Payment (BZ\$)	\$2,942	\$3,128	\$3,783	\$3,131	\$3,137

Source: Social Security Board

Notes: Mean annual payment refers to the average annual cost per allowed claim.

¹Includes all persons classified as having a work disability that are in receipt of a Social Security Income.

Table 3.22
Disablement Grants Awarded by Degree of Disability in Percent,
Sex and Mean Annual Payment,
2015 - 2019

Degree of Disability (%)	Year				
	2015	2016	2017	2018r	2019p
Total	107	139	104	103	80
00.00 - 04.99	44	72	43	49	27
05.00 - 09.99	34	43	33	34	31
10.00 - 14.99	16	13	21	6	9
15.00 - 19.99	10	6	3	10	9
20.00 - 24.99	3	5	4	4	4
Male	100	127	97	92	65
00.00 - 04.99	41	65	39	46	21
05.00 - 09.99	31	40	30	29	29
10.00 - 14.99	15	11	21	4	4
15.00 - 19.99	10	6	3	9	9
20.00 - 24.99	3	5	4	4	2
Female	7	12	7	11	15
00.00 - 04.99	3	2	4	3	6
05.00 - 09.99	3	8	3	5	2
10.00 - 14.99	1	2	0	2	5
15.00 - 19.99	0	0	0	1	0
20.00 - 24.99	0	0	0	0	2
Mean Annual Payment (BZ\$)	\$4,547	\$3,703	\$4,048	\$4,035	\$4,646

Source: Social Security Board

Note: Mean annual payment refers to the average cost per allowed claim.

Table 3.23
Survivors' Benefit Awarded to Children for Death Benefit
During the Year by Sex and Mean Annual Payment,
(Death due to Employment Injury)
2015 - 2019

Selected Characteristics	Year				
	2015	2016	2017	2018r	2019p
Sex					
Total	18	7	19	12	12
Male	11	3	13	7	2
Female	7	4	6	5	10
Mean Annual Payment (BZ\$)	\$1,993	\$1,718	\$2,312	\$1,911	\$1,976

Source: Social Security Board

Note: Mean annual payment refers to the average annual cost per allowed claim.

Table 3.24
'Survivors' Benefit at Year End for Children Receiving Death Benefit
by Age Group, Sex and Mean Annual Payment,
(Death due to Employment Injury)
2015 - 2019

Age Group	Year				
	2015	2016	2017	2018r	2019p
Total	191	181	174	164	151
00 - 04	7	6	7	8	10
05 - 09	27	25	27	24	22
10 - 14	72	64	66	53	43
15 - 16	39	33	31	42	59
17 - 21	32	39	29	30	14
22+	14	14	14	7	3
Male	99	98	87	87	78
00 - 04	4	3	4	6	5
05 - 09	16	16	19	16	12
10 - 14	36	31	35	27	25
15 - 16	18	18	13	22	29
17 - 21	19	24	11	14	4
22+	6	6	5	2	3
Female	92	83	87	77	73
00 - 04	3	3	3	2	5
05 - 09	11	9	8	8	10
10 - 14	36	33	31	26	18
15 - 16	21	15	18	20	30
17 - 21	13	15	18	16	10
22+	8	8	9	5	0
Mean Annual Payment (BZ\$)	\$1,945	\$2,034	\$2,100	\$2,122	\$2,139

Source: Social Security Board

Notes: Mean annual payment refers to the average annual cost per allowed claim.

¹Includes all children in receipt of a Social Security Death Benefit.

Table 3.25
'Survivors' Benefit at Year End for Spouses Receiving
Death Benefit by Sex and Mean Annual Payment,
(Death due to Employment Injury)
2015 - 2019

Selected Characteristics	Year				
	2015	2016	2017	2018r	2019p
Sex					
Total	87	87	86	86	87
Male	0	0	0	0	0
Female	87	87	86	86	87
Mean Annual Payment (BZ\$)	\$4,635	\$4,743	\$4,864	\$4,915	\$4,816

Source: Social Security Board

Notes: Mean annual payment refers to the average annual cost per allowed claim.

¹Includes all persons classified as spouses receiving a Social Security Death Benefit.

Table 3.26
Employment Injury by Cause and Nature of Injury,
2015 - 2019

Selected Characteristics	Year				
	2015	2016	2017	2018r	2019p
Total	1,923	1,841	1,789	1,745	1,492
Cause					
Other Accidents including Late Effects	1,247	1,285	1,238	1,131	958
Accidental Falls	515	400	416	464	384
Transport Accidents	113	83	101	111	97
Accidents Caused by Fire and Flames	14	19	14	14	21
Other Violence	12	25	10	6	18
Accidental Poisoning	10	6	4	8	10
Homicide and Injury Purposefully Inflicted by Other Persons	2	4	1	3	1
Drugs, Medicaments Causing Adverse Effects	0	1	0	0	0
Misadventures during Medical Care	2	1	1	2	0
Injury Undetermined Whether Accidentally or Purposefully Inflicted	1	0	0	0	0
Missing Codes	7	17	4	6	3
Nature of Injury					
Open Wounds and Injury to Blood Vessels	555	672	698	612	457
Other Injuries, Early Complications of Trauma	585	474	375	430	442
Dislocations, Sprains and Strains	397	289	347	339	285
Fractures	149	166	164	155	150
Burns	38	49	40	44	42
Foreign Bodies Entering Orifice	88	85	61	60	36
Late Effects of Injuries, Poisoning, Toxic Effects and Other External Causes	47	34	35	52	29
Concussion	47	49	47	33	19
Poisoning and Toxic Effects	4	6	5	7	6
Intercranial and Internal injuries, Including Nerves	9	12	13	7	21
Complications of Medical and Surgical Care	0	0	1	0	1
Missing Codes	4	5	3	6	4

Source: Social Security Board

Table 3.27
Employment Injury by Industry,
2015 - 2019

Industry	Year				
	2015	2016	2017	2018r	2019p
Total	1,923	1,841	1,789	1,745	1,492
Agriculture	576	476	445	374	303
Construction	274	292	289	303	253
Manufacturing	241	242	255	246	182
Public Administration and Defence; Compulsory Social Security	131	119	127	146	145
Wholesale and Retail Trade; Repair of Motor Vehicles and Motorcycles	171	209	149	174	138
Accommodation and Food Service Activities	168	152	167	148	138
Administrative and Support Service Activities	39	27	36	43	51
Transportation and Storage	38	62	66	48	38
Information and Communication	10	22	17	20	27
Education	27	16	21	32	26
Water Supply; Sewerage, Waste Management and Remediation Activities	21	29	22	25	25
Activities of Households as Employers; Undifferentiated Goods & Service Producing Activities of Households for Own Use	28	18	23	24	23
Mining and Quarrying	12	10	11	17	22
Professional, Scientific and Technical Activities	22	28	32	32	21
Forestry and Logging	13	19	17	21	19
Human Health and Social Work Activities	27	36	33	25	18
Fishing and Aquaculture	57	28	23	18	14
Other Service Activities	16	14	13	15	11
Financial and Insurance Activities	6	6	4	8	10
Electricity, Gas, Steam and Air Condition Supply	13	6	6	11	9
Real Estate Activities	12	19	14	7	9
Arts, Entertainment and Recreation	16	9	15	5	7
Activities of Extra-Territorial Organizations and Bodies	5	1	4	3	3
Do Not Know or Not Stated	0	1	0	0	0

Source: Social Security Board

Note: Classification of Industry as per International Standard Industrial Classification of Economic Activities Revision 4.

Table 3.28
Number of Non-Contributory Pensioners by District and Sex,
2015 - 2019

District	Year				
	2015	2016	2017	2018r	2019p
Total	2,513	2,214	2,018	1,863	1,575
Corozal	381	324	303	283	234
Orange Walk	530	489	463	439	383
Belize City	448	373	324	278	217
Cayo	585	517	467	440	376
Stann Creek	261	228	198	179	142
Toledo	308	283	263	244	223
Female	1,646	1,461	1,347	1,239	1,055
Corozal	236	197	182	171	141
Orange Walk	330	308	292	277	240
Belize City	318	268	241	205	165
Cayo	393	351	318	301	260
Stann Creek	178	161	147	132	109
Toledo	191	176	167	153	140
Male	867	753	671	624	520
Corozal	145	127	121	112	93
Orange Walk	200	181	171	162	143
Belize City	130	105	83	73	52
Cayo	192	166	149	139	116
Stann Creek	83	67	51	47	33
Toledo	117	107	96	91	83

Source: Social Security Board

Note: Figures above represent the Number of Recipients that received at least one payment in reference year.

Table 3.29
Total Expenditure, Non-Contributory Pensioners by Branch,
2015 - 2019
(BZ\$)

Branch	Year				
	2015	2016	2017	2018r	2019p
Total	\$2,721,600	\$2,494,000	\$2,274,300	\$2,062,200	\$1,764,600
Belize City	\$464,000	\$401,500	\$341,200	\$289,500	\$229,700
Belmopan	\$219,800	\$207,800	\$195,700	\$182,300	\$153,100
Corozal	\$408,000	\$371,300	\$337,900	\$302,700	\$263,600
Dangriga	\$167,900	\$156,200	\$139,500	\$127,700	\$107,600
Independence	\$100,700	\$92,500	\$79,600	\$65,700	\$51,400
Orange Walk	\$593,100	\$563,000	\$533,600	\$496,000	\$431,000
Punta Gorda	\$342,100	\$323,300	\$302,200	\$277,800	\$253,000
San Pedro	\$10,800	\$8,400	\$6,300	\$5,100	\$3,600
Santa Elena	\$415,200	\$370,000	\$338,300	\$315,400	\$271,600

Source: Social Security Board

Note: NCP Expenditure includes total payment made for all approved NCP recipients during January - December in reference year.

Table 3.30
Number of Non-Contributory Pensioners by Age Group, Year and District,
2015 - 2019

Age Group & Year	District						Total
	Corozal	Orange Walk	Belize	Cayo	Stann Creek	Toledo	
2019p							
Total	234	383	217	376	142	223	1,575
65 - 69	8	6	4	6	0	7	31
70 - 74	16	34	15	26	19	23	133
75 - 79	62	105	47	85	31	49	379
80 - 84	75	107	55	102	48	73	460
85 - 89	41	71	58	83	31	47	331
90 - 94	25	46	25	63	10	15	184
95 - 99	5	11	11	10	3	6	46
100 & Over	2	3	2	1	0	3	11
2018r							
Total	283	439	278	440	179	244	1,863
65 - 69	7	14	4	8	4	4	41
70 - 74	22	45	22	38	22	29	178
75 - 79	92	125	60	104	49	58	488
80 - 84	77	123	82	122	64	80	548
85 - 89	55	80	58	98	27	48	366
90 - 94	22	41	37	57	11	17	185
95 - 99	5	10	13	12	2	7	49
100 & Over	3	1	2	1	0	1	8
2017							
Total	303	463	324	467	198	263	2,018
65 - 69	6	13	7	11	6	9	52
70 - 74	29	54	26	43	24	30	206
75 - 79	99	153	80	125	55	70	582
80 - 84	86	108	93	125	72	81	565
85 - 89	59	85	71	104	30	51	400
90 - 94	19	42	32	43	9	15	160
95 - 99	3	8	13	15	2	6	47
100 & Over	2	0	2	1	0	1	6
2016							
Total	324	489	373	517	228	283	2,214
65 - 69	7	22	10	15	11	16	81
70 - 74	40	70	35	68	28	41	282
75 - 79	117	150	93	127	64	81	632
80 - 84	79	110	107	130	80	76	582
85 - 89	59	95	81	111	34	47	427
90 - 94	14	34	31	50	8	16	153
95 - 99	5	8	13	13	3	5	47
100 & Over	3	0	3	3	0	1	10
2015							
Total	381	530	448	585	261	308	2,513
65 - 69	9	24	12	20	14	15	94
70 - 74	60	87	52	91	38	50	378
75 - 79	130	157	117	139	71	91	705
80 - 84	82	121	128	145	78	79	633
85 - 89	66	95	77	122	41	49	450
90 - 94	21	33	41	50	14	16	175
95 - 99	9	11	15	15	4	7	61
100 & Over	4	2	6	3	1	1	17

Source: Social Security Board

Table 3.31
Appeals Heard by an Appeal Tribunal by Branch Office, Benefit
and Outcome of Appeal,
2015 - 2019

Selected Characteristics	Year				
	2015	2016	2017	2018r	2019p
Branch Office	46	39	44	48	80
Corozal	5	8	10	10	10
Orange Walk	0	1	2	1	8
Belize	21	16	19	21	33
San Pedro	0	2	3	1	5
Belmopan	9	4	5	3	5
Santa Elena	5	5	1	5	11
Dangriga	1	1	1	0	3
Independence	1	1	2	4	2
Punta Gorda	4	1	1	3	3
Benefit	46	39	44	48	80
Short Term	17	12	12	20	19
Sickness	12	8	6	14	15
Maternity Allowance	2	4	3	6	4
Maternity Grant	3	0	3	0	0
Long Term	17	14	21	16	34
Retirement	2	1	3	3	3
Survivors	5	10	14	5	10
Invalidity	10	3	4	7	18
Funeral Grant (NC)	0	0	0	1	3
Employment Injury	12	13	11	12	27
Injury	8	8	6	7	13
Disablement	4	5	5	5	13
Death Benefit	0	0	0	0	1
Funeral Grant (EI)	0	0	0	0	0
Outcome of Appeal	46	39	44	48	80
Ruling for SSB	32	26	23	31	46
Ruling for Appellant	12	11	16	15	21
Cases Pending/adjourned	2	1	2	1	13
Abandoned/Withdrawn	0	1	3	1	0

Source: Social Security Board

INVESTMENTS

This section presents data on investments, investment income, investment per capita, inflation rate, and rates of return on investments. The main source of data is the Social Security Board's Investment Services databases and also audited financials. The only exceptions are the data on inflation rate and on population which were gotten from the SIB.

Investments made by SSB play a major role in sustaining and developing Belize's economy. SSB investments are made across the spectrum of Belize's economic sectors and are based on the type of economic activity carried out by the investment recipient. These economic sectors include: Banking, Agriculture, Education, Housing, Utilities, Tourism, Financial Institutions, and Other. SSB generates revenue from contributions made by the insured persons. Contributions collected are used to meet operating expenses and to pay out benefits expenditure; any surplus is invested as per stipulation and guidelines of the Act.

In this section, investment data are presented yearly and cumulatively. Investments are the total investments made in a particular year while the total investment as at December 31 is the increase in the investment by successive yearly additions.

Table 4.1
Investment Portfolio Allocations by Sector as at December 31,
2015 - 2019
(BZ\$)

SECTOR	Year									
	2015		2016		2017		2018r		2019p	
	Quantity	%	Quantity	%	Quantity	%	Quantity	%	Quantity	%
Total	\$440,260,035	100.0	\$424,983,429	100.0	\$439,485,510	100.0	\$451,805,581	100.0	\$465,638,458	100.0
Utilities	\$214,899,892	48.8	\$195,192,834	45.9	\$243,086,307	55.3	\$251,496,888	55.7	\$254,366,230	54.6
Financial Institutions	\$148,964,089	33.8	\$148,511,025	34.9	\$117,186,239	26.7	\$128,264,876	28.4	\$144,449,988	31.0
Agriculture	\$43,169,590	9.8	\$40,445,773	9.5	\$42,032,312	9.6	\$36,607,300	8.1	\$33,911,726	7.3
Tourism	\$18,411,729	4.2	\$26,496,700	6.2	\$24,433,046	5.6	\$25,729,003	5.7	\$23,476,606	5.0
Housing	\$10,049,055	2.3	\$9,313,406	2.2	\$8,689,485	2.0	\$8,601,194	1.9	\$6,883,145	1.5
Education	\$1,484,744	0.3	\$1,193,650	0.3	\$929,866	0.2	\$750,398	0.2	\$657,974	0.1
Other	\$8,019,099	1.8	\$8,047,540	1.9	\$7,646,947	1.7	\$5,544,427	1.2	\$6,182,200	1.3
Less Provision for Loss on Investment	(\$4,738,164)	(1.1)	(\$4,217,499)	(1.0)	(\$4,518,692)	(1.0)	(\$5,188,505)	(1.2)	(\$4,289,411)	(0.9)

Source: Social Security Board

Note: Total Investment may not add up due to rounding. Decrease in Investment 2016 relates to a restatement of SSB's financial statement.

Table 4.2
Investment Indicators,
2015 - 2019

Indicators	Year				
	2015	2016	2017	2018r	2019p
Population Estimate	368,310	377,969	385,766	395,882	406,262
Investment (BZ\$)	\$440,260,035	\$424,983,429	\$439,485,510	\$451,805,581	\$465,638,458
Increase in Investments (BZ\$)	\$30,105,537	(\$15,276,606)	\$14,502,081	\$12,320,071	\$13,832,877
Net Investment Income (BZ\$)	\$24,791,972	\$26,268,696	\$23,888,585	\$20,453,617	\$20,880,617
Investment Per Capita (BZ\$)	\$81.74	\$40.42	\$37.59	\$31.12	\$34.05
Investment Income Per Capita (BZ\$)	\$67.31	\$69.50	\$61.93	\$51.67	\$51.40
Inflation Rate	(0.9)	0.7	1.1	0.3	0.2
Nominal Rate of Return on Investments in Percent	6.0	6.3	5.7	4.7	4.7
Real Rate of Return on Investments in Percent	7.0	5.5	4.5	4.4	4.4

Source: Social Security Board and Statistical Institute of Belize

Note: Decrease in Investment 2016 relates to a restatement of SSB's financial statement

SELF-EMPLOYED PERSONS

This section presents statistics on self-employed persons in Belize. Indicators include registration, contribution and benefit payments of the self-employed. The principal source of the data is the Social Security Board's (SSB) Registration, Benefit and Contribution databases.

In SSB's pursuit of its goal to help promote the extension of social security coverage in line with the objectives and strategies of SSB and the International Social Security Association (ISSA), SSB has included a new section to its Statistical Abstract, namely, Social Security data on the number of self-employed.

In February 2003, SSB implemented the self-employment scheme under which self-employed persons may voluntarily contribute to the Social Security Fund. SSB defines a self-employed as someone who is gainfully occupied in employment in Belize, is not an employed person, and is between ages eighteen to sixty years. Self-employed insured persons are responsible for their entire payment of 7% of their declared weekly income ranging from \$55.00 to \$320.00. For a self-employed to qualify for any benefit, no less than 26 contributions need to be paid into the self-employed scheme and all other qualifying conditions for any benefit under the SSB Regulations need to be met.

Table 5.1
Self-Employed by Selected Characteristics,
2015 - 2019

Selected Characteristics	Year				
	2015	2016	2017	2018r	2019p
Number of Persons in Labour Force	153,689	162,254	164,935	172,086	178,499
Number of Self-Employed Persons in the Labour Force	31,169	39,026	39,160	43,403	47,253
Newly Registered	404	521	451	515	590
Number of Active Insured Self-Employed Persons	1,195	1,390	1,460	1,564	1,746
Population	368,310	377,969	385,766	395,882	406,262
Contributions Paid (BZ\$)	\$573,775	\$667,280	\$747,772	\$833,059	\$942,771
% of Self-Employed in the Labour Force	0.8%	0.9%	0.9%	0.9%	1.0%
% of Self-Employed in the Employed Force	3.8%	3.6%	3.7%	3.6%	3.7%
% of Self-Employed in the Population	0.3%	0.4%	0.4%	0.4%	0.4%

Source: Social Security Board

Note: N/A - Not Available

Table 5.2
Newly Registered Self-Employed by District,
2015 - 2019

District	Year				
	2015	2016	2017	2018r	2019p
Total	404	521	451	515	590
Corozal	38	53	32	42	50
Orange Walk	42	59	54	54	62
Belize	146	171	174	196	212
Cayo	80	98	93	89	118
Stann Creek	68	84	79	103	119
Toledo	30	56	19	31	29

Source: Social Security Board

Table 5.3
Active Insured Self-Employed by Selected Characteristics,
2015 - 2019

Selected Characteristics	Year				
	2015	2016	2017	2018r	2019p
Total	1,195	1,390	1,460	1,564	1,746
District					
Corozal	127	147	159	177	191
Orange Walk	145	169	183	185	194
Belize	335	394	431	477	564
Cayo	274	304	305	325	349
Stann Creek	227	268	250	305	346
Toledo	87	108	132	95	102
Age Group					
18 - 19	3	4	2	4	4
20 - 24	37	34	31	29	29
25 - 29	75	106	89	88	102
30 - 34	125	155	151	167	178
35 - 39	157	163	165	180	201
40 - 44	173	213	221	224	230
45 - 49	191	208	208	242	269
50 - 54	207	241	288	286	331
55 - 59	198	231	258	299	336
60	29	35	47	45	66
Marital Status					
Married	589	679	717	770	848
Single	356	398	398	433	524
Divorced	13	15	16	14	16
Common Law	201	258	291	307	317
Widow	25	25	25	24	22
Legally Separated	11	15	13	16	19

Source: Social Security Board

Table 5.4
Male Active Insured Self-Employed by Selected Characteristics,
2015 - 2019

Selected Characteristics	Year				
	2015	2016	2017	2018r	2019p
Total	557	640	651	690	749
District					
Corozal	69	76	77	82	89
Orange Walk	89	101	96	94	89
Belize	141	160	174	190	214
Cayo	126	139	143	152	159
Stann Creek	98	113	108	128	151
Toledo	34	51	53	44	47
Age Group					
18 - 19	1	3	1	1	3
20 - 24	19	16	15	13	11
25 - 29	37	43	36	38	44
30 - 34	61	81	73	70	70
35 - 39	77	80	83	92	92
40 - 44	84	92	95	96	101
45 - 49	88	95	97	110	118
50 - 54	93	114	115	117	139
55 - 59	81	100	114	138	146
60	16	16	22	15	25
Marital Status					
Married	288	334	332	348	384
Single	147	167	159	160	187
Divorced	2	2	3	4	4
Common Law	111	128	150	171	164
Widow	4	3	3	2	2
Legally Separated	5	6	4	5	8

Source: Social Security Board

Table 5.5
Female Active Insured Self-Employed by Selected Characteristics,
2015 - 2019

District	Year				
	2015	2016	2017	2018r	2019p
Total	638	750	809	874	997
District					
Corozal	58	71	82	95	102
Orange Walk	56	68	87	91	105
Belize	194	234	257	287	350
Cayo	148	165	162	173	190
Stann Creek	129	155	142	177	195
Toledo	53	57	79	51	55
Age Group					
18 - 19	2	1	1	3	1
20 - 24	18	18	16	16	18
25 - 29	38	63	53	50	58
30 - 34	64	74	78	97	108
35 - 39	80	83	82	88	109
40 - 44	89	121	126	128	129
45 - 49	103	113	111	132	151
50 - 54	114	127	173	169	192
55 - 59	117	131	144	161	190
60	13	19	25	30	41
Marital Status					
Married	301	345	385	422	464
Single	209	231	239	273	337
Divorced	11	13	13	10	12
Common Law	90	130	141	136	153
Widow	21	22	22	22	20
Legally Separated	6	9	9	11	11

Source: Social Security Board

Table 5.6
Self-Employed Contributions Collected and their Percentage Distribution by Average Weekly Insurable Earnings,
2015 - 2019
(BZ\$)

District	Year									
	2015		2016		2017		2018r		2019p	
	Quantity	%	Quantity	%	Quantity	%	Quantity	%	Quantity	%
Total	\$573,775	100.0	\$667,280	100.0	\$747,772	100.0	\$833,059	100.0	\$942,771	100.0
Under \$70.00	\$19,376	3.4	\$20,013	3.0	\$20,265	2.7	\$20,551	2.5	\$21,090	2.2
\$70.00 - \$109.99	\$67,619	11.8	\$70,583	10.6	\$71,634	9.6	\$71,712	8.6	\$73,204	7.8
\$110.00 - \$139.99	\$9,205	1.6	\$10,880	1.6	\$14,475	1.9	\$18,218	2.2	\$24,351	2.6
\$140.00 - \$179.99	\$72,226	12.6	\$77,103	11.6	\$87,277	11.7	\$93,350	11.2	\$105,695	11.2
\$180.00 - \$219.99	\$132,036	23.0	\$169,557	25.4	\$193,180	25.8	\$213,748	25.7	\$237,756	25.2
\$220.00 - \$259.99	\$27,301	4.8	\$34,980	5.2	\$36,683	4.9	\$50,966	6.1	\$56,638	6.0
\$260.00 - \$299.99	\$16,340	2.8	\$18,094	2.7	\$21,806	2.9	\$21,452	2.6	\$23,081	2.4
\$300.00 and Over	\$229,673	40.0	\$266,070	39.9	\$302,452	40.4	\$343,061	41.2	\$400,956	42.5

Source: Social Security Board

Table 5.7
Number of Benefits Awarded to Self-Employed Insured Persons
During the Year by Branch/Benefit,
2015 - 2019

Branch/Benefit	Year				
	2015	2016	2017	2018r	2019p
Total	223	271	321	325	287
Short Term	178	210	243	233	211
Sickness	162	191	213	208	192
Maternity Allowance	9	7	13	12	13
Maternity Grant	7	12	17	13	6
Long Term	37	50	62	76	66
Retirement	32	42	51	60	51
Survivors	1	4	5	7	6
Invalidity	2	4	2	4	3
Funeral Grant (NC)	2	0	4	5	6
Non-Contributory Pensions	0	0	0	0	0
Employment Injury	8	11	16	16	10
Injury Benefit	5	10	15	16	9
Disablement Grant	2	0	1	0	1
Death	1	1	0	0	0
Funeral Grant (EI)	0	0	0	0	0

Source: Social Security Board

Notes: NC - Natural Causes.

EI - Employment Injury

Table 5.8
Benefits Expenditure Paid to Self-Employed Insured Persons by Branch/Benefit,
2015 - 2019
(BZ\$)

Branch/Benefit	Year				
	2015	2016	2017	2018r	2019p
Total	\$997,815	\$1,185,014	\$1,490,301	\$1,649,879	\$1,948,087
Short Term	\$106,558	\$86,817	\$109,006	\$101,198	\$99,364
Sickness	\$87,512	\$68,097	\$77,655	\$73,781	\$68,779
Maternity Allowance	\$16,946	\$15,120	\$26,251	\$23,516	\$28,786
Maternity Grant	\$2,100	\$3,600	\$5,100	\$3,900	\$1,800
Long Term	\$837,059	\$1,042,514	\$1,307,026	\$1,471,932	\$1,779,736
Retirement	\$726,672	\$902,634	\$1,128,117	\$1,332,965	\$1,592,903
Survivors	\$61,385	\$87,980	\$117,036	\$84,122	\$116,290
Invalidity	\$47,002	\$51,900	\$57,873	\$47,345	\$62,543
Funeral Grant (NC)	\$2,000	\$0	\$4,000	\$7,500	\$8,000
Non-Contributory Pensions	\$0	\$0	\$0	\$0	\$0
Employment Injury	\$54,198	\$55,683	\$74,269	\$76,749	\$68,986
Injury Benefit	\$6,575	\$7,571	\$16,546	\$11,464	\$8,255
Disablement Grant	\$32,903	\$34,503	\$42,559	\$43,523	\$41,590
Death	\$14,720	\$13,608	\$15,163	\$21,762	\$19,141
Funeral Grant (EI)	\$0	\$0	\$0	\$0	\$0

Source: Social Security Board

Notes: NC - Natural Causes.

EI - Employment Injury

Table 5.9
Ratio of Sickness Benefit Cases Paid to Active Insured Persons by Selected Characteristics,
2015 - 2019

Contributors	Year				
	2015	2016	2017	2018r	2019p
Total Active Insured Persons (AIP)					
No. of Sickness Cases Paid	30,927	31,173	39,301	33,204	34,550
No. of AIP	102,456	104,321	105,846	109,071	110,937
No. of Sickness Cases Paid/No. of AIP	0.30	0.30	0.37	0.30	0.31
Self-Employed (SE)					
No. of Sickness Cases Paid	162	191	213	208	192
No. of SE Contributors	1,195	1,390	1,460	1,564	1,746
No. of Sickness Cases Paid/No. of SE Contributors	0.14	0.14	0.15	0.13	0.11
Other Contributors					
No. of Sickness Cases Paid	30,765	30,982	39,088	32,996	34,358
No. of Other Contributors	101,261	102,931	104,386	107,507	109,191
No. of Sickness Cases Paid/No. of Other Contributors	0.30	0.30	0.37	0.31	0.31

Source: Social Security Board

MIGRANT WORKERS

This section presents statistics on Migrant Workers in Belize. Indicators include the registration, contribution and benefit payments of migrant workers. The principal source of the data is the Social Security Board's (SSB) Registration, Benefit and Contribution databases.

In response to the high demand for migrant data from key stakeholders like International Organization of Migration (IOM) Belize, Department of Immigration and Nationality Services, Labour Department and Belize Trade and Investment Development Service (Beltraide), SSB has created a section on the number of migrant workers by country of birth, age, sex among other things since 2017. The statistics that are presented in this section were compiled based on the following definition: a migrant worker is someone who is gainfully occupied in employment in Belize who was not born in the country of Belize. Migrant workers who have legal status to reside and work in Belize and are insured persons may contribute to the Fund and receive all Social Security benefits as born Belizeans once they meet the qualifying conditions.

Table 6.1
Migrant Workers by Selected Characteristics,
2015 - 2019

Selected Characteristics	Year				
	2015	2016	2017	2018r	2019p
Total Registered	94,602	96,986	99,384	101,355	103,701
Newly Registered	3,125	2,384	2,398	1,971	2,346
Number of Active Migrant Workers	18,226	18,122	17,944	17,939	17,726
Contributions Paid (BZ\$)	\$12,258,083	\$12,442,833	\$12,704,749	\$13,160,949	\$14,498,629
Population	368,310	377,969	385,766	395,882	406,262
Number of Persons in Labour Force	153,689	162,254	164,935	172,086	178,499
% of Active Migrant Workers in the Labour Force	11.9%	11.2%	10.9%	10.4%	9.9%
% of Active Migrant Workers in the Population	4.9%	4.8%	4.7%	4.5%	4.4%

Source: Social Security Board

Table 6.2
Number of Migrant Workers by Region and Nationality,
2015 - 2019

Nationality	Year				
	2015	2016	2017	2018r	2019p
Total	18,226	18,122	17,944	17,939	17,726
Central America	15,302	15,046	14,600	14,623	14,543
Guatemala	8,473	8,341	8,059	8,057	7,932
Honduras	3,319	3,248	3,135	3,126	3,164
El Salvador	3,111	3,066	3,025	3,031	3,005
Nicaragua	360	351	341	374	405
Costa Rica	21	24	24	17	18
Panama	18	16	16	18	19
North America	1,164	1,166	1,222	1,171	1,135
Mexico	572	556	614	581	542
United States of America	498	510	518	504	511
Canada	94	100	90	86	82
Asia	687	831	1,014	1,054	916
India	236	254	277	295	302
China (Mainland)	163	263	400	415	287
Taiwan	131	135	147	148	136
Philippines	89	99	99	105	97
Bangladesh	17	25	37	47	43
Japan	10	11	10	9	10
Pakistan	4	6	7	6	7
Thailand	7	9	9	7	6
Other	30	29	28	22	28
Caribbean	463	467	475	485	505
Jamaica	189	180	171	177	178
Cuba	78	78	84	85	99
Guyana	59	61	60	59	58
Haiti	42	45	53	56	50
Trinidad And Tobago	35	37	38	39	49
Dominican Republic	12	18	19	20	21
Dominica	12	10	10	12	12
St. Vincent	10	11	11	8	9
Other	26	27	29	29	29
Africa	212	204	198	192	188
Nigeria	144	129	122	120	110
Republic of South Africa	29	34	33	29	31
Ghana	15	13	12	13	16
Zimbabwe	4	5	9	7	8
Guinea	3	3	3	3	4
Cameroon	3	4	4	3	3
Other	14	16	15	17	16

Source: Social Security Board

Note: Region is classified based on the methodology used by United Nations Statistics website for countries' regional and sub-regional standard codes for statistical use.

Table 6.2 Cont'd.
Number of Migrant Workers by Region and Nationality,
2015 - 2019

Nationality	Year				
	2015	2016	2017	2018r	2019p
Europe	287	275	292	269	267
United Kingdom	137	128	124	115	122
Turkey	42	36	46	39	40
Germany	19	19	18	20	22
France	10	10	9	15	19
Netherlands (Holland)	10	17	17	14	10
Italy	9	6	10	10	2
Switzerland	5	5	8	7	4
Russia	2	2	5	6	5
Czech Republic	6	6	5	5	4
Denmark	9	7	8	5	5
Belguim-Luxembourg	2	2	3	4	5
Other	36	37	39	29	29
South America	78	95	103	104	131
Colombia	34	41	40	43	47
Venezuela	12	17	26	25	39
Bolivia	6	8	7	7	9
Brazil	6	6	7	7	9
Ecuador	5	6	6	8	8
Peru	5	4	6	4	5
Other	10	13	11	10	14
Middle East	26	30	33	36	33
Lebanon	19	25	26	27	24
Israel	4	3	3	4	5
Other	3	2	4	5	4
Oceania	5	7	6	5	6
Australia	5	6	5	5	5
Fiji	0	1	1	0	0
New Zealand	0	0	0	0	1
Do Not Know or Not Stated	2	1	1	0	2

Source: Social Security Board

Note: Region is classified based on the methodology used by United Nations Statistics website for countries' regional and sub-regional standard codes for statistical use.

Table 6.3
Number of Male Migrant Workers by Region and Nationality,
2015 - 2019

Nationality	Year				
	2015	2016	2017	2018r	2019p
Total	12,616	12,454	12,236	12,149	11,842
Central America	10,831	10,566	10,130	10,106	9,894
Guatemala	6,302	6,147	5,891	5,836	5,630
Honduras	2,122	2,057	1,947	1,960	1,958
El Salvador	2,165	2,134	2,080	2,063	2,038
Nicaragua	220	205	189	225	244
Costa Rica	13	14	15	12	13
Panama	9	9	8	10	11
North America	700	693	746	699	663
Mexico	398	380	425	396	369
United States of America	253	261	273	261	253
Canada	49	52	48	42	41
Asia	456	566	684	722	641
India	197	213	232	253	264
China (Mainland)	110	178	262	268	189
Taiwan	69	76	80	81	78
Philippines	43	49	51	55	47
Bangladesh	16	24	35	45	41
Japan	4	5	4	3	4
Pakistan	4	6	7	6	7
Thailand	1	2	2	1	1
Other	12	13	11	10	10
Caribbean	240	237	253	256	267
Jamaica	91	91	90	92	92
Cuba	44	40	44	45	56
Guyana	30	28	28	28	27
Haiti	36	33	42	45	39
Trinidad And Tobago	11	12	12	12	17
Dominican Republic	4	6	7	8	10
Dominica	6	6	6	6	6
St. Vincent	5	6	6	4	5
Other	13	15	18	16	15
Africa	124	120	122	115	115
Nigeria	76	62	63	61	56
Republic of South Africa	15	23	23	19	20
Ghana	13	12	11	12	14
Zimbabwe	3	4	7	5	8
Guinea	2	2	2	2	3
Cameroon	3	4	4	3	3
Other	12	13	12	13	11

Source: Social Security Board

Note: Region is classified based on the methodology used by United Nations Statistics website for countries' regional and sub-regional standard codes for statistical use.

Table 6.3 Cont'd.
Number of Male Migrant Workers by Region and Nationality,
2015 - 2019

Nationality	Year				
	2015	2016	2017	2018r	2019p
Europe	192	177	194	177	174
United Kingdom	85	74	73	71	81
Turkey	38	34	43	37	37
Germany	13	12	12	14	14
France	6	5	6	9	9
Netherlands (Holland)	6	12	11	9	6
Italy	7	6	10	9	2
Switzerland	4	4	4	2	1
Russia	1	1	1	1	1
Czech Republic	4	4	3	2	3
Denmark	3	2	2	2	2
Belguim-Luxembourg	1	1	2	3	4
Other	24	22	27	18	14
South America	45	62	71	71	83
Colombia	20	26	28	29	30
Venezuela	9	13	20	22	31
Bolivia	3	5	4	4	5
Brazil	2	3	4	4	4
Ecuador	4	5	5	5	4
Peru	3	2	4	2	3
Other	4	8	6	5	6
Middle East	24	28	31	34	30
Lebanon	18	24	26	27	24
Israel	3	2	1	2	3
Other	3	2	4	5	3
Oceania	3	5	5	3	3
Australia	3	4	4	3	3
Fiji	0	1	1	0	0
New Zealand	0	0	0	0	0
Do Not Know or Not Stated	1	0	0	0	2

Source: Social Security Board

Note: Region is classified based on the methodology used by United Nations Statistics website for countries' regional and sub-regional standard codes for statistical use.

Table 6.4
Number of Female Migrant Workers by Nationality,
2015 - 2019

Nationality	Year				
	2015	2016	2017	2018r	2019p
Total	5,610	5,668	5,708	5,761	5,851
Central America	4,471	4,480	4,470	4,517	4,649
Guatemala	2,171	2,194	2,168	2,221	2,302
Honduras	1,197	1,191	1,188	1,166	1,206
El Salvador	946	932	945	968	967
Nicaragua	140	146	152	149	161
Costa Rica	8	10	9	5	5
Panama	9	7	8	8	8
North America	464	473	476	472	472
Mexico	174	176	189	185	173
United States of America	245	249	245	243	258
Canada	45	48	42	44	41
Asia	231	265	330	332	275
India	39	41	45	42	38
China (Mainland)	53	85	138	147	105
Taiwan	62	59	67	67	58
Philippines	46	50	48	50	50
Bangladesh	1	1	2	2	2
Japan	6	6	6	6	6
Pakistan	0	0	0	0	0
Thailand	6	7	7	6	5
Other	18	16	17	12	11
Caribbean	223	230	222	229	238
Jamaica	98	89	81	85	86
Cuba	34	38	40	40	43
Guyana	29	33	32	31	31
Haiti	6	12	11	11	11
Trinidad And Tobago	24	25	26	27	32
Dominican Republic	8	12	12	12	11
Dominica	6	4	4	6	6
St. Vincent	5	5	5	4	4
Other	13	12	11	13	14
Africa	88	84	76	83	73
Nigeria	68	67	59	59	54
Republic of South Africa	14	11	10	10	11
Ghana	2	1	1	1	2
Zimbabwe	1	1	2	2	0
Guinea	1	1	1	1	1
Cameroon	0	0	0	0	0
Other	2	3	3	10	5

Source: Social Security Board

Note: Region is classified based on the methodology used by United Nations Statistics website for countries' regional and sub-regional standard codes for statistical use.

Table 6.4 Cont'd.
Number of Female Migrant Workers by Region and Nationality,
2015 - 2019

Nationality	Year				
	2015	2016	2017	2018r	2019p
Europe	95	98	98	92	93
United Kingdom	52	54	51	44	41
Turkey	4	2	3	2	3
Germany	6	7	6	6	8
France	4	5	3	6	10
Netherlands (Holland)	4	5	6	5	4
Italy	2	0	0	1	0
Switzerland	1	1	4	5	3
Russia	1	1	4	5	4
Czech Republic	2	2	2	3	3
Denmark	6	5	6	3	3
Belguim-Luxembourg	1	1	1	1	1
Other	12	15	12	11	13
South America	33	33	32	34	48
Colombia	14	15	12	14	17
Venezuela	3	4	6	3	8
Bolivia	3	3	3	3	4
Brazil	4	3	3	3	5
Ecuador	1	1	1	3	4
Peru	2	2	2	2	2
Other	6	5	5	6	8
Middle East	2	2	2	2	3
Lebanon	1	1	0	0	0
Israel	1	1	2	2	2
Other	0	0	0	0	1
Oceania	2	2	1	2	3
Australia	2	2	1	2	2
Fiji	0	0	0	0	0
New Zealand	0	0	0	0	1
Do Not Know or Not Stated	1	1	1	0	0

Source: Social Security Board

Note: Region is classified based on the methodology used by United Nations Statistics website for countries' regional and sub-regional standard codes for statistical use.

Table 6.5
Number of CARICOM Migrant Workers by Sex and Nationality,
2015 - 2019

Sex	Year				
	2015	2016	2017	2018r	2019p
Total CARICOM Migrants	372	371	373	380	385
Antigua And Barbuda	2	3	4	4	3
Bahamas	5	4	3	3	3
Barbados	2	2	4	4	5
Dominica	12	10	10	12	12
Grenada	4	4	3	4	5
Guyana	59	61	60	59	58
Haiti	42	45	53	56	50
Jamaica	189	180	171	177	178
Saint Kitts And Nevis	2	2	3	2	2
Saint Lucia	3	4	5	5	5
St. Vincent & The Grenadines	10	11	11	8	9
Suriname	1	2	2	2	2
Trinidad And Tobago	35	37	38	39	49
Associates of CARICOM					
Cayman Islands	6	6	6	5	4
Male CARICOM Migrants	190	190	202	203	201
Antigua And Barbuda	2	3	4	4	3
Bahamas	1	1	1	0	0
Barbados	1	2	3	1	1
Dominica	6	6	6	6	6
Grenada	2	2	2	3	3
Guyana	30	28	28	28	27
Haiti	36	33	42	45	39
Jamaica	91	91	90	92	92
Saint Kitts And Nevis	0	0	1	1	1
Saint Lucia	1	1	2	2	3
St. Vincent & The Grenadines	5	6	6	4	5
Suriname	0	1	1	1	1
Trinidad And Tobago	11	12	12	12	17
Associates of CARICOM					
Cayman Islands	4	4	4	4	3
Female CARICOM Migrants	182	181	171	177	184
Antigua And Barbuda	0	0	0	0	0
Bahamas	4	3	2	3	3
Barbados	1	0	1	3	4
Dominica	6	4	4	6	6
Grenada	2	2	1	1	2
Guyana	29	33	32	31	31
Haiti	6	12	11	11	11
Jamaica	98	89	81	85	86
Saint Kitts And Nevis	2	2	2	1	1
Saint Lucia	2	3	3	3	2
St. Vincent & The Grenadines	5	5	5	4	4
Suriname	1	1	1	1	1
Trinidad And Tobago	24	25	26	27	32
Associates of CARICOM					
Cayman Islands	2	2	2	1	1

Source: Social Security Board

Table 6.6
Active Insured Migrant Workers by Selected Characteristics,
2015 - 2019

Selected Characteristics	Year				
	2015	2016	2017	2018r	2019p
Total	18,226	18,122	17,944	17,939	17,726
District					
Corozal	929	903	834	817	797
Orange Walk	1,120	1,173	1,207	1,204	1,174
Belize	5,768	5,784	5,901	5,942	5,929
Cayo	4,304	4,387	4,316	4,336	4,269
Stann Creek	4,631	4,425	4,294	4,492	4,806
Toledo	1,474	1,450	1,392	1,148	751
Age Group					
14 - 24	2,350	2,280	2,092	2,034	1,955
25 - 34	5,073	4,966	4,901	4,778	4,598
35 - 44	5,092	5,054	4,957	4,945	4,903
45 - 54	3,502	3,566	3,645	3,739	3,805
55+	2,209	2,256	2,349	2,443	2,465
Marital Status					
Single	7,904	7,716	7,619	7,584	7,824
Married	6,212	6,304	6,273	6,273	5,963
Common Law	3,798	3,790	3,754	3,786	3,662
Legally Separated	100	98	95	91	80
Widow	133	125	116	117	112
Divorced	79	89	87	88	85

Source: Social Security Board

Table 6.7
Male Active Insured Migrant Workers by Selected Characteristics,
2015 - 2019

Selected Characteristics	Year				
	2015	2016	2017	2018r	2019p
Total	12,616	12,454	12,236	12,182	11,872
District					
Corozal	680	643	585	567	549
Orange Walk	848	880	890	885	869
Belize	3,450	3,430	3,516	3,544	3,498
Cayo	2,901	2,933	2,873	2,875	2,770
Stann Creek	3,673	3,511	3,355	3,479	3,666
Toledo	1,064	1,057	1,017	832	520
Age Group					
14 - 24	1,725	1,683	1,536	1,462	1,380
25 - 34	3,400	3,315	3,270	3,189	3,005
35 - 44	3,334	3,255	3,156	3,168	3,095
45 - 54	2,427	2,437	2,468	2,493	2,492
55+	1,730	1,764	1,806	1,870	1,900
Marital Status					
Single	5,398	5,199	5,116	5,023	5,102
Married	4,409	4,466	4,410	4,415	4,147
Common Law	2,671	2,658	2,587	2,624	2,512
Legally Separated	55	53	55	48	44
Widow	56	50	42	46	45
Divorced	27	28	26	26	22

Source: Social Security Board

Table 6.8
Female Active Insured Migrant Workers by Selected Characteristics,
2015 - 2019

Selected Characteristics	Year				
	2015	2016	2017	2018r	2019p
Total	5,610	5,668	5,708	5,757	5,854
District					
Corozal	249	260	249	250	248
Orange Walk	272	293	317	319	305
Belize	2,318	2,354	2,385	2,398	2,431
Cayo	1,403	1,454	1,443	1,461	1,499
Stann Creek	958	914	939	1,013	1,140
Toledo	410	393	375	316	231
Age Group					
14 - 24	625	597	556	572	575
25 - 34	1,673	1,651	1,631	1,589	1,593
35 - 44	1,758	1,799	1,801	1,777	1,808
45 - 54	1,075	1,129	1,177	1,246	1,313
55+	479	492	543	573	565
Marital Status					
Single	2,506	2,517	2,503	2,561	2,722
Married	1,803	1,838	1,863	1,858	1,816
Common Law	1,127	1,132	1,167	1,162	1,150
Widow	45	45	40	43	36
Divorced	77	75	74	71	67
Legally Separated	52	61	61	62	63

Source: Social Security Board

Table 6.9
Active Insured Migrant Workers and their Percentage Distribution by Industry,
2015 - 2019

Industry	2015		2016		2017		2018r		2019p	
	Quantity	%	Quantity	%	Quantity	%	Quantity	%	Quantity	%
Total Active Insured Migrant Workers	18,226	100.0	18,122	100.0	17,944	100.0	17,939	100.0	17,726	100.0
Agriculture	6,333	34.7	5,602	27.0	5,183	28.9	5,047	28.1	5,121	28.9
Wholesale and Retail Trade; Repair of Motor Vehicles and Motorcycles	2,420	13.3	2,626	12.5	2,761	15.4	2,786	15.5	2,671	15.1
Accommodation and Food Service Activities	2,387	13.1	2,473	12.0	2,578	14.4	2,606	14.5	2,523	14.2
Construction	2,021	11.1	2,129	10.0	1,856	10.3	1,870	10.4	1,855	10.5
Manufacturing	1,819	10.0	1,736	7.9	1,621	9.0	1,533	8.5	1,556	8.8
Professional, Scientific and Technical Activities	537	2.9	913	3.9	862	4.8	994	5.5	925	5.2
Public Administration and Defence; Compulsory Social Security	1,091	6.0	981	4.2	901	5.0	928	5.2	896	5.1
Administrative and Support Service Activities	649	3.6	669	3.6	710	4.0	743	4.1	782	4.4
Activities of Households as Employers; Undifferentiated Goods & Service Producing Activities of Households for Own Use	679	3.7	727	3.1	721	4.0	707	3.9	728	4.1
Education	585	3.2	585	3.0	599	3.3	597	3.3	588	3.3
Human Health and Social Work Activities	394	2.2	392	2.1	450	2.5	443	2.5	477	2.7
Transportation and Storage	355	1.9	415	1.9	453	2.5	430	2.4	402	2.3
Other Service Activities	322	1.8	326	1.6	332	1.9	325	1.8	351	2.0
Information and Communication	175	1.0	214	1.2	232	1.3	228	1.3	252	1.4
Arts, Entertainment and Recreation	252	1.4	266	1.3	260	1.4	249	1.4	250	1.4
Financial and Insurance Activities	230	1.3	246	1.0	230	1.3	246	1.4	247	1.4
Fishing and Aquaculture	400	2.2	271	1.2	251	1.4	225	1.3	162	0.9
Real Estate Activities	149	0.8	176	0.6	194	1.1	140	0.8	132	0.7
Mining and Quarrying	137	0.8	96	0.5	111	0.6	102	0.6	91	0.5
Water Supply; Sewerage, Waste Management and Remediation Activities	123	0.7	87	0.4	94	0.5	78	0.4	81	0.5
Forestry and Logging	67	0.4	58	0.2	53	0.3	53	0.3	59	0.3
Electricity, Gas Steam and Air Condition Supply	43	0.2	46	0.2	51	0.3	45	0.3	59	0.3
Activities of Extra-Territorial Organizations and Bodies	49	0.3	50	0.2	56	0.3	56	0.3	57	0.3
Do Not Know or Not Stated	6	0.0	5	0.0	6	0.0	14	0.1	13	0.1

Source: Social Security Board

Notes: The total number of Active Insured Persons shown is not equal to the sum of the Insured Persons in each industry during the respective years due to persons working in different industries during the year. The sum of the percentages of Insured Persons in each industry does not add up to 100% during the respective years due to persons working in different industries during the year.

Classification of Industry as per International Standard Industrial Classification of Economic Activities Revision 4.

Table 6.10
Active Male Insured Migrant Workers and their Percentage Distribution by Industry,
2015 - 2019

Industry	Year				
	2015	2016	2017	2018r	2019p
	Quantity	Quantity	Quantity	Quantity	Quantity
	%	%	%	%	%
Total Active Insured Migrant Workers	12,616	12,454	12,236	12,182	11,872
	100.0	100.0	100.0	100.0	100.0
Agriculture	5,383	4,714	4,327	4,218	4,248
Wholesale and Retail Trade; Repair of Motor Vehicles and Motorcycles	1,496	1,645	1,744	1,767	1,666
Accommodation and Food Service Activities	1,163	1,194	1,267	1,266	1,194
Construction	1,928	2,027	1,769	1,772	1,743
Manufacturing	1,430	1,348	1,203	1,122	1,164
Professional, Scientific and Technical Activities	340	700	661	788	713
Public Administration and Defence; Compulsory Social Security	535	517	489	479	463
Administrative and Support Service Activities	474	460	493	519	543
Activities of Households as Employers; Undifferentiated Goods & Service Producing Activities of Households for Own Use	155	172	180	166	171
Education	255	256	265	268	254
Human Health and Social Work Activities	136	143	187	168	178
Transportation and Storage	270	333	353	338	315
Other Service Activities	166	170	184	164	183
Information and Communication	107	133	138	140	146
Arts, Entertainment and Recreation	151	158	159	158	151
Financial and Insurance Activities	82	89	85	85	89
Fishing and Aquaculture	284	188	174	168	127
Real Estate Activities	113	135	146	94	91
Mining and Quarrying	124	85	99	90	82
Water Supply; Sewerage, Waste Management and Remediation Activities	88	65	71	59	60
Forestry and Logging	64	54	50	49	56
Electricity, Gas Steam and Air Condition Supply	29	32	38	32	48
Activities of Extra-Territorial Organizations and Bodies	26	27	33	32	35
Do Not Know or Not Stated	5	4	5	13	12
	0.0	0.0	0.0	0.1	0.1

Source: Social Security Board

Notes: The total number of Active Insured Persons shown is not equal to the sum of the Insured Persons in each industry during the respective years due to persons working in different industries during the year. The sum of the percentages of Insured Persons in each industry does not add up to 100% during the respective years due to persons working in different industries during the year.

Classification of Industry as per International Standard Industrial Classification of Economic Activities Revision 4.

Table 6.11
Active Female Insured Migrant Workers and their Percentage Distribution by Industry,
2015 - 2019

Industry	2015		2016		2017		2018r		2019p	
	Quantity	%	Quantity	%	Quantity	%	Quantity	%	Quantity	%
Total Active Insured Migrant Workers	5,610	100.0	5,668	100.0	5,708	100.0	5,757	100.0	5,854	100.0
Agriculture	950	16.9	888	15.7	856	15.0	829	14.4	873	14.9
Wholesale and Retail Trade; Repair of Motor Vehicles and Motorcycles	924	16.5	981	17.3	1,017	17.8	1,019	17.7	1,005	17.2
Accommodation and Food Service Activities	1,224	21.8	1,279	22.6	1,311	23.0	1,340	23.3	1,329	22.7
Construction	93	1.7	102	1.8	87	1.5	98	1.7	112	1.9
Manufacturing	389	6.9	388	6.8	418	7.3	411	7.1	392	6.7
Professional, Scientific and Technical Activities	197	3.5	213	3.8	201	3.5	206	3.6	212	3.6
Public Administration and Defence; Compulsory Social Security	556	9.9	464	8.2	412	7.2	449	7.8	433	7.4
Administrative and Support Service Activities	175	3.1	209	3.7	217	3.8	224	3.9	239	4.1
Activities of Households as Employers; Undifferentiated Goods & Service Producing Activities of Households for Own Use	524	9.3	555	9.8	541	9.5	541	9.4	557	9.5
Education	330	5.9	329	5.8	334	5.9	329	5.7	334	5.7
Human Health and Social Work Activities	258	4.6	249	4.4	263	4.6	275	4.8	299	5.1
Transportation and Storage	85	1.5	82	1.4	100	1.8	92	1.6	87	1.5
Other Service Activities	156	2.8	156	2.8	148	2.6	161	2.8	168	2.9
Information and Communication	68	1.2	81	1.4	94	1.6	88	1.5	106	1.8
Arts, Entertainment and Recreation	101	1.8	108	1.9	101	1.8	91	1.6	99	1.7
Financial and Insurance Activities	148	2.6	157	2.8	145	2.5	161	2.8	158	2.7
Fishing and Aquaculture	116	2.1	83	1.5	77	1.3	57	1.0	35	0.6
Real Estate Activities	36	0.6	41	0.7	48	0.8	46	0.8	41	0.7
Mining and Quarrying	13	0.2	11	0.2	12	0.2	12	0.2	9	0.2
Water Supply; Sewerage, Waste Management and Remediation Activities	35	0.6	22	0.4	23	0.4	19	0.3	21	0.4
Forestry and Logging	3	0.1	4	0.1	3	0.1	4	0.1	3	0.1
Electricity, Gas Steam and Air Condition Supply	14	0.2	14	0.2	13	0.2	13	0.2	11	0.2
Activities of Extra-Territorial Organizations and Bodies	23	0.4	23	0.4	23	0.4	24	0.4	22	0.4
Do Not Know or Not Stated	1	0.0	1	0.0	1	0.0	1	0.0	1	0.0

Source: Social Security Board

Notes: The total number of Active Insured Persons shown is not equal to the sum of the Insured Persons in each industry during the respective years due to persons working in different industries during the year. The sum of the percentages of Insured Persons in each industry does not add up to 100% during the respective years due to persons working in different industries during the year. Classification of Industry as per International Standard Industrial Classification of Economic Activities Revision 4.

Table 6.12
Active Insured Migrant Workers and their Percentage Distribution by Average Weekly Insurable Earnings,
2015 - 2019

Weekly Earnings Group	Year									
	2015		2016		2017		2018r		2019p	
	Quantity	%	Quantity	%	Quantity	%	Quantity	%	Quantity	%
Total Migrants	18,226	100.0	18,122	100.0	17,944	100.0	17,939	100.0	17,726	100.0
Under \$70.00	1,110	6.1	949	5.2	872	4.9	837	4.7	645	3.6
\$70.00 - \$109.99	1,442	7.9	1,434	7.9	1,333	7.4	1,208	6.7	1,070	6.0
\$110.00 - \$139.99	1,361	7.5	1,280	7.1	1,169	6.5	1,124	6.3	1,053	5.9
\$140.00 - \$179.99	3,050	16.7	2,880	15.9	2,711	15.1	2,659	14.8	2,240	12.6
\$180.00 - \$219.99	2,510	13.8	2,423	13.4	2,416	13.5	2,425	13.5	2,398	13.5
\$220.00 - \$259.99	1,787	9.8	1,780	9.8	1,885	10.5	1,904	10.6	1,979	11.2
\$260.00 - \$299.99	1,088	6.0	1,011	5.6	1,065	5.9	1,040	5.8	1,194	6.7
\$300.00 and Over	5,449	29.9	5,938	30.0	6,035	33.6	6,267	34.9	871	4.9
\$300.00 - \$339.99	N/A	N/A	N/A	N/A	N/A	N/A	N/A	N/A	1,130	6.4
\$340.00 - \$379.99	N/A	N/A	N/A	N/A	N/A	N/A	N/A	N/A	806	4.5
\$380.00 - \$419.99	N/A	N/A	N/A	N/A	N/A	N/A	N/A	N/A	565	3.2
\$420.00 and Over	N/A	N/A	N/A	N/A	N/A	N/A	N/A	N/A	3,288	18.5
**	429	2.4	427	2.4	458	2.6	475	2.6	487	2.7

Source: Social Security Board

Notes: ** Applies to persons age 60 - 64 years who have received a retirement benefit and all persons 65 years and older.

Active Insured Migrant Workers that are within the 2019 Average Weekly Insurable Earnings \$300 & Over Group are those who are Self-Employed Migrant Workers and Active Insured Migrant Workers who only contributed to the \$300 & Over Group for the period January to June 2019.

Table 6.13
Number of Benefits Awarded to Migrant Workers by Branch/Benefit,
2015 - 2019

Branch/Benefit	Year				
	2015	2016	2017	2018r	2019p
Total	5,336	4,863	5,399	4,375	4,178
Short Term	4,488	4,086	4,682	3,664	3,554
Sickness	3,812	3,429	4,103	3,089	3,083
Maternity Allowance	170	171	158	165	125
Maternity Grant	506	486	421	410	346
Long Term	336	308	312	339	321
Retirement	125	115	102	157	161
Survivors	24	17	30	28	23
Invalidity	5	9	3	3	8
Funeral Grant (NC)	162	161	177	151	129
Non-Contributory Pensions	20	6	0	0	0
Employment Injury	512	469	405	372	303
Injury Benefit	504	468	399	368	299
Disablement	5	0	5	4	3
Death	2	1	1	0	1
Funeral Grant (EI)	1	0	0	0	0

Source: Social Security Board

Notes: NC - Natural Causes

EI - Employment Injury

Table 6.14
Benefits Expenditure Paid to Migrant Workers by Branch/Benefit,
2015 - 2019
(BZ\$)

Branch/Benefit	Year				
	2015	2016	2017	2018r	2019p
Total	\$7,532,018	\$8,160,235	\$9,023,240	\$9,471,957	\$10,676,717
Short Term	\$1,740,322	\$1,533,942	\$1,688,374	\$1,465,151	\$1,471,466
Sickness	\$1,177,360	\$994,195	\$1,171,883	\$914,567	\$1,048,905
Maternity Allowance	\$409,061	\$393,047	\$390,491	\$426,384	\$317,861
Maternity Grant	\$153,900	\$146,700	\$126,000	\$124,200	\$104,700
Long Term	\$5,110,178	\$5,920,319	\$6,622,994	\$7,306,537	\$8,381,538
Retirement	\$3,534,688	\$4,227,689	\$4,849,618	\$5,509,615	\$6,363,100
Survivors	\$521,257	\$635,428	\$776,086	\$909,185	\$1,103,886
Invalidity	\$215,632	\$245,503	\$260,392	\$268,873	\$220,637
Funeral Grant (NC)	\$225,000	\$225,000	\$209,699	\$205,364	\$285,615
Non-Contributory Pensions	\$613,600	\$586,700	\$527,200	\$413,500	\$408,300
Employment Injury	\$681,518	\$705,974	\$711,871	\$700,270	\$823,712
Injury Benefit	\$299,831	\$300,955	\$276,710	\$262,955	\$265,925
Disablement	\$305,706	\$317,671	\$335,655	\$334,672	\$358,409
Death	\$74,481	\$87,347	\$99,507	\$102,643	\$199,379
Funeral Grant (EI)	\$1,500	\$0	\$0	\$0	\$0

Source: Social Security Board

Notes: NC - Natural Causes

 EI - Employment Injury

Table 6.15
Ratio of Sickness Benefit Cases Paid to Migrant Workers by Selected Characteristics,
2015 - 2019

Migrant Workers	Year				
	2015	2016	2017	2018r	2019p
No. of Sickness Cases Paid	3,812	3,429	4,041	3,089	3,083
No. of Active Migrant Workers	18,226	18,122	17,944	17,939	17,726
No. of Sickness Cases Paid/No. of Active Migrant Workers	0.21	0.19	0.23	0.17	0.17

Source: Social Security Board

