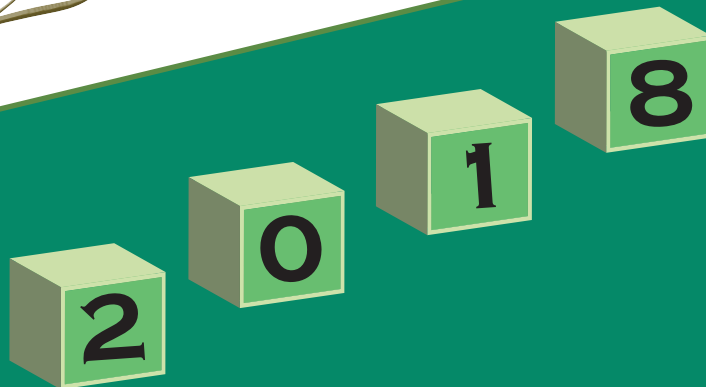




SOCIAL SECURITY BOARD

*Statistical
Abstract*



Issued July 2019

All Rights Reserved

© Social Security Board, 2018. This document, including text and data compilations, is the exclusive property of the Social Security Board, and is protected by Belize and International Copyright Laws. All content and all information herein have been produced by the Social Security Board for nonprofit, research, and educational use only. This document is not intended for direct or indirect commercial use. No part may be reproduced in any form, displayed in any form, or reused for any purpose or by any means without prior written authorization of the Social Security Board. A fee may accompany such written authorization. Written authorization to reproduce, display, or reuse the content and information herein shall be provided on the condition that the content and information shall not be modified in any way, and that a copyright notice accompany all copies or reproduction.

PREFACE

The 2018 *Statistical Abstract of the Social Security Board* is the 12th such publication by the Social Security Board (SSB) of Belize. This Abstract makes available to the public comprehensive statistical information aimed at increasing public awareness of the Social Security system and ensures the highest level of transparency. This publication covers information for the period 2014 to 2018 on selected SSB topics of public interest that cover all aspects of Insured Persons including: Registration, Contributions, Benefits, Non-contributory Pensions, Appeals, and Investments. Additional information on these topics may be obtained upon written request to SSB.

Furthermore, in SSB's quest to provide the most useful, relevant, timely and accurate data to its stakeholders, and to help promote the extension of social security coverage in line with the objectives and strategies of SSB and the International Social Security Association (ISSA), SSB has included two new sections to its Statistical Abstract, namely, data on the number of migrant workers and self-employed. Migrant workers and self-employed were also included in this Abstract for monitoring and evaluation purposes, as well as in response to high demand for additional data from key stakeholders like the International Organization for Migration (IOM) Belize, Department of Immigration and Nationality Services, Labour Department and Belize Trade and Investment Development Service (Beltraide).

SSB extends its most sincere gratitude to the Statistical Institute of Belize and the Ministry of Health, who both contributed statistical information printed in this publication. SSB is also grateful to each staff member who assisted to make this Statistical Abstract a reality. A special thank you is extended to all members of the Policy & Research Department for their hard work and adherence to high standards in preparing and publishing this document. The input of users and the general public is appreciated as SSB strives for continuous quality improvement in the communication of information.

Any question and/or comment may be addressed to:

SOCIAL SECURITY BOARD - BELIZE

P.O. BOX 18

BLISS PARADE, BELMOPAN

CAYO DISTRICT

BELIZE, CENTRAL AMERICA

TEL: 501-822-2163

EMAIL: info@socialsecurity.org.bz

Visit us at: <http://www.socialsecurity.org.bz> for an Adobe version of this publication.

LIST OF ACRONYMS

AIP	Active Insured Persons
APV	Actuarial Present Value
BZ	Belize
BZ\$	Belize Dollars
CARICOM	Caribbean Community
CMS	Contribution Management System
DIP	Deceased Insured Person
EI	Employment Injury
GDP	Gross Domestic Product
GOB	Government of Belize
ILO	International Labour Organization
ISIC	International Standard Industrial Classification of all Economic Activities
MOH	Ministry of Health
N/A	Not Available or Not Applicable
NC	Natural Causes
NCP	Non-Contributory Pension
NCPs	Non-Contributory Pensioners
NHI	National Health Insurance
PCP	Primary Care Provider
p	Provisional
r	Revised
Rev.	Revision
SE	Self-Employed
SIB	Statistical Institute of Belize
SSB	Social Security Board
UNWTO	United Nations World Tourism Organization

Notes:

- Exchange rate: US\$1.00 equals BZ\$2.00.
- \$ refers to the Belize dollar unless otherwise stated
- 2018 figures are provisional and 2017 figures have been revised
- Totals in the tables are not always equal to the sum of its components due to rounding off.

GLOSSARY OF TERMS

TERM	DEFINITION
Active Business	A business that has made at least one weekly contribution during the year.
Active Employer	An employer who has made at least one weekly contribution during the year.
Active Self-Employed	A self-employed person who has made at least one weekly contribution during the year.
Active Insured Person	A person who has made at least one weekly contribution during the year.
Appeal	A request from an insured person to have his/her case be heard by an appeal tribunal since he/she is aggrieved by or dissatisfied with a decision made by the SSB regarding a benefit claimed.
Appeal Tribunal	A body that hears appeals arising from the decision of the Social Security Board to disallow a claim for a benefit. The Appeal Tribunal comprises an Attorney as Chairman, a representative of employers and a representative of employees. A Tribunal is any person or institution with the authority to judge, adjudicate on, or determine claims or disputes.
Beneficiary	A person entitled to a benefit or a person who is in receipt of a benefit.
Benefit	An advantage, privilege, right, or financial reimbursement (such as that made under an insurance policy, medical plan, or pension plan). For Social Security purposes, a benefit is payable in respect of Sickness, Maternity, Injury, Disablement, Invalidity, Retirement, Death, Funeral Grant or Survivors' Benefits where an insured person has met all the requirements.
Benefit Regulations	The Social Security (Benefit) Regulations, 1980. These are the rules that govern the entitlement to benefit and the sums payable to a beneficiary. A regulation is a principle, rule or law designed to control or govern conduct. In this document, regulations are made by the Minister of Finance under the Social Security Act, Chapter 44 of the Laws of Belize.
Board	A group of people (Board of Directors) chosen to govern the affairs of the Social Security Board that was established under section 28 of the Social Security Act.
Contribution	The money that employers and persons in insurable employment pay into the Social Security Fund. A contribution is payable under the Social Security Act.
Death Benefit	Periodical payments in respect of an injured person who dies as a result of work-related injury or disease. This benefit is paid to the survivors of the deceased insured person (i.e. widow, widower, children or parents).
Disablement Benefit	Periodical payments or a lump sum grant to an insured person who as a result of employment injury or disease sustains loss of physical or mental faculty amounting to not less than 1% degree of disability.
Earnings	Amount of money a person in insurable employment makes or the total compensation that an employee receives in exchange for the service they perform for their employer including overtime payments, acting allowances and responsibility allowances.
Employed Person	A person employed in insurable employment as defined by Section 3 (Social Security Act).

TERM	DEFINITION
Employment Injury (EI)	An Injury arising out of and in the course of insurable employment.
EI Benefit Branch	The benefit branch from which benefits are paid to an insured person who suffers injury from an accident arising out of and in the course of employment. Benefits that are payable from the EI Benefit Branch are: Injury, Disablement Grant, Disablement Pension, Death Benefit, Medical Care, Constant Attendance Allowance and Funeral Grant due to EI.
Fund	The Social Security Fund established under Section 46 of the Social Security Act: contributions are paid into the fund; benefits and administrative costs are paid out of the fund. The excess is invested.
Funeral Grant	A benefit payment made to the person bearing funeral expenses in respect of an insured person who dies as a result of natural causes or work-related injury or disease and also on the death of a spouse or dependent child.
Industry	An organized economic activity or a branch of a commercial enterprise concerned with the output of a specified product or service. The categories of industries utilized by the SSB are aggregated by the International Standard Industrial Classification of all Economic Activities Revision 4 (ISIC Rev. 4).
Inflation	An increase in the overall price level of goods and services in a country.
Inflation Rate	The percentage change in the price level of goods and services in an economy over a period of time.
Insurable Employment	Any employment specified in Part 1 of the First Schedule of the Social Security Act. Insurable employment means working in a job for not less than 8 hours a week for another person.
Insured Person	A person who is registered with Social Security and has/had insurable employment.
Invalidity Benefit	Periodical payments or a lump sum payment to an insured person who is rendered permanently incapable of work otherwise than as a result of employment injury.
Investment	The laying out of money or capital with the expectation of a profit. That is, the use of capital to create more money, either through income producing vehicles or through more risk-oriented ventures designed to result in capital gains.
Investment Income	The income received in a particular year from investment loans, securities and other investments.
Labour Force	All persons aged 14 years and older who were engaged in any form of economic activity for at least one hour during the reference week, or who were willing and able to be engaged in producing goods and services.
Long Term Benefit Branch	The benefit branch or category where benefits are payable for: Retirement Pension, Retirement Grant, Invalidation Pension, Invalidation Grant, Survivors' Pension, Survivors' Grant, and Funeral Grant due to natural causes.
Maternity Allowance	Periodical payments made to an insured woman in the event of her pregnancy or confinement.
Maternity Grant	A lump sum payment paid to an insured woman or to an insured man on the occasion of his wife's confinement if his wife is not entitled to this grant.

TERM	DEFINITION
Medical Board	A panel that consists of two or more Medical Practitioners appointed by the SSB of whom one may be appointed as the Chairman. Medical Board members are appointed to render advice on disablement questions, for the purpose of establishing invalidity, and for advice on any other medical issue.
Medical Certificate	A certificate issued by a registered medical practitioner in Belize.
Medical Practitioner/ Medical Referee	A person registered under the Medical Practitioners Registration Act and includes any Government Medical Officer in Belize. Medical Practitioners/Referees render advice on disablement questions, for the purpose of establishing invalidity, and for advice on any other medical issue.
Migrant Worker	Someone who is gainfully occupied in employment in Belize who was not born in the country of Belize.
Nominal Rate	Return on investments that is unadjusted for inflation.
Non-Contributory Pension	A pension that is awarded to non-insured persons as a social assistance program by the Government of Belize to help alleviate poverty for women 65 years or older and men 67 years and older.
Primary Care Provider	An individual or an institution that provides preventive and curative health care services in a systematic way to individuals, families or communities.
Prescribed	Requirements designated by Social Security regulation for providing services and benefits.
Real Rate	Return on investments that is adjusted for inflation.
Retirement Benefit	Periodical payments or a lump sum payment to an eligible insured person who a) has attained the age of sixty and is retired from insurable employment or b) who is at least sixty five years (whether employed or unemployed) and c) has met the contribution requirements.
Self-Employed Person	A person gainfully occupied in Belize who is not a person employed under an employer and who is between the ages of 18 and 60 years.
Short Term Benefit Branch	The benefit branch or category includes Sickness Benefit, Maternity Allowance and Maternity Grant.
Sickness Benefit	Periodical payments or a lump sum payment to an insured person who is temporarily incapable of work otherwise than as a result of employment injury.
Survivors' Benefit	Periodical payments or a lump sum payment on behalf of an insured person who dies, otherwise than as a consequence of an employment injury. This is the money paid to the eligible dependents of a deceased insured person (i.e. spouses, dependent children or parents dependent on the insured person).
Total Contributions	Government of Belize contributions to the NHI Fund as well as those collected from employers, employees, voluntary and Self employed persons.
Voluntary Insured Person	An insured person who is not liable to pay contributions but chooses to make contribution payments under the Social Security Act. If an insured person stops working or becomes self-employed, that person can continue to pay contributions as a Voluntary Insured Person.

TABLE OF CONTENTS

PREFACE	I
LIST OF ACRONYMS	II
GLOSSARY OF TERMS	III
TABLE OF CONTENTS	VI
KEY INDICATORS	IX
Table 0.1 Key Indicators for Selected Years, 2014 - 2018	ix
REGISTRATION	1
Table 1.1 Percentage of Valid Card Holders in the Population by District, 2014 - 2018	2
Table 1.2 Valid Cards by Card Type, 2014 - 2018	2
Table 1.3 Newly Registered Persons by Age Group, 2014 - 2018	3
Table 1.4 Percentage of Newly Registered Persons in the Population by District, 2014 - 2018	3
Table 1.5 Social Security Registration Coverage of Live Births, 2014 - 2018	4
Table 1.6 Newly Registered Employers by District, 2014 - 2018	4
Table 1.7 Newly Registered Businesses by District, 2014 - 2018	4
CONTRIBUTIONS	5
Schedule of Contributions Based on Weekly Insurable Earnings	5
Table 2.1 Total Contributions and Total Benefit Expenditure, 2014 - 2018	6
Chart 1 Total Contributions and Total Benefit Expenditure, 2014 - 2018	6
Chart 2 Contributions and Benefit Expenditure, 2014 - 2018	7
Table 2.2 Contributions Collected and its Percentage Distribution by District, 2014 - 2018	7
Table 2.3 Active Insured Persons and the Labour Force Participation Rates, 2014 - 2018	8
Chart 3 Labour Force, Employed Labour Force and Active Insured Persons, 2014 - 2018	8
Table 2.4 Active Insured Persons by District, Sex and Age Group, 2014 - 2018	9
Chart 4 Active Insured Persons by Month, 2014 - 2018	10
Table 2.5 Active Insured Persons and their Percentage Distribution by Industry, 2014 - 2018	11
Table 2.6 Active Insured Persons and their Percentage Distribution by Average Weekly Insurable Earnings, 2014 - 2018	12
Table 2.7 Number of Active Insured Persons by Industry and Average Weekly Insurable Earnings, 2017r	13
Table 2.8 Percentage Distribution of Active Insured Persons by Industry and Average Weekly Insurable Earnings, 2017r	14
Table 2.9 Number of Active Insured Persons by Industry and Average Weekly Insurable Earnings, 2018p	15
Table 2.10 Percentage Distribution of Active Insured Persons by Industry and Average Weekly Insurable Earnings, 2018p	16
Table 2.11 Active Insured Persons within the Tourism Industry by Sex and District, 2015	17
Table 2.12 Active Insured Persons within the Tourism Industry by Sex and District, 2016	18
Table 2.13 Active Insured Persons within the Tourism Industry by Sex and District, 2017r	19
Table 2.14 Active Insured Persons within the Tourism Industry by Sex and District, 2018p	20
Table 2.15a Active Insured Persons within the Tourism Industry by Employment Area, Nationality and Sex, 2015 - 2016	21

Table 2.15b	Active Insured Persons within the Tourism Industry by Employment Area, Nationality and Sex, 2017 - 2018	22
Chart 5	Active Insured Persons in the Tourism Industry, 2015 - 2018	23
Table 2.16	Active Employers by District, 2014 - 2018	23
Table 2.17	Active Businesses by Industry, 2014 - 2018	24
Table 2.18	Active Businesses and its Percentage Distribution by District, 2014 - 2018	25
Table 2.19	Active Businesses by Number of Employees and Business Type, 2014 - 2018	25

BENEFITS ----- 26

Table 3.1	Benefits Expenditure by Branch/Benefit, 2014 - 2018	27
Table 3.2	New Claims Allowed by Branch/Benefit, 2014 - 2018	28
Table 3.3	Benefit Recipients by Branch/Benefit, 2014 - 2018	28
Table 3.4	Total Number of Sickness Benefit Days Claimed within each Sickness Benefit Days Group, 2014 - 2018	29
Table 3.5	Mean Benefit Payment by Sickness Benefit Days Group, 2014 - 2018	30
Table 3.6	Sickness Benefit by Selected Characteristics, 2014 - 2018	31
Table 3.7	Sickness Benefit Claims Paid by Industry, 2014 - 2018	32
Table 3.8	Maternity Allowance by Selected Characteristics, 2014 - 2018	33
Table 3.9	Maternity Grants Paid by Age Group and Sex, 2014 - 2018	34
Table 3.10	Pensions by Recipients at Year End and Expenditure, 2014 - 2018	35
Table 3.11	Retirement Pensions Awarded During the Year by Age, Sex and Mean Annual Payment, 2014 - 2018	36
Table 3.12	Retirement Grants Awarded by Age, Sex and Mean Annual Payment, 2014 - 2018	37
Table 3.13	Invalidity Pensioners at Year End by Age Group and Sex, 2014 - 2018	38
Table 3.14	Spouses Receiving Survivors' Pension at Year End by Sex and Mean Annual Payment, 2014 - 2018	39
Table 3.15	Children Awarded Survivors' Pension During the Year by Age Group, Sex and Mean Annual Payment, 2014 - 2018	39
Table 3.16	Children Receiving Survivors' Pension at Year End by Age Group, Sex and Mean Annual Payment, 2014 - 2018	40
Table 3.17	Dead Insured Person by Number of Surviving Orphans and Year, 2014 - 2018	41
Table 3.18	Dead Insured Person by Number of Surviving Spouses and Parents, Sex and Year, 2014 - 2018	41
Table 3.19	Survivors' Grants Awarded to Beneficiaries by Age Group, Sex and Mean Annual Payment, 2014 - 2018	42
Table 3.20	Disablement Pensions Awarded During the Year by Degree of Disability in Percent, Sex and Mean Annual Payment, 2014 - 2018	43
Table 3.21	Disablement Pensions at Year End by Selected Characteristics, 2014 - 2018	44
Table 3.22	Disablement Grants Awarded by Degree of Disability in Percent, Sex and Mean Annual Payment, 2014 - 2018	45
Table 3.23	Survivors' Benefit Awarded to Children for Death Benefit During the Year by Sex and Mean Annual Payment (Death due to Employment Injury), 2014 - 2018	45
Table 3.24	Survivors' Benefit at Year End for Children Receiving Death Benefit by Age Group, Sex and Mean Annual Payment (Death due to Employment Injury), 2014 - 2018	46
Table 3.25	Survivors' Benefit at Year End for Spouses Receiving Death Benefit by Sex and Mean Annual Payment (Death due to Employment Injury), 2014 - 2018	46
Table 3.26	Employment Injury by Cause and Nature of Injury, 2014 - 2018	47
Table 3.27	Employment Injury by Industry, 2014 - 2018	48

Table 3.28	Number of Non-Contributory Pensioners at Year End by District and Sex, 2014 - 2018-----	49
Table 3.29	Total Expenditure, Non-Contributory Pensioners by Branch, 2014 - 2018-----	49
Table 3.30	Number of Non-Contributory Pensioners by Age Group, Year and District, 2014 - 2018-----	50
Table 3.31	Appeals Heard by an Appeal Tribunal by Branch Office, Benefit and Outcome of Appeal, 2014 - 2018---	51

INVESTMENTS----- 52

Table 4.1	Investment Portfolio Allocations by Sector as at December 31, 2014 - 2018-----	53
Table 4.2	Investment Indicators, 2014 - 2018-----	53

SELF-EMPLOYED PERSONS ----- 54

Table 5.1	Self-Employed by Selected Characteristics, 2014 - 2018-----	55
Table 5.2	Newly Registered Self-Employed by District, 2014 - 2018-----	55
Table 5.3	Active Insured Self-Employed by Selected Characteristics, 2014 - 2018-----	56
Table 5.4	Male Active Insured Self-Employed by Selected Characteristics, 2014 - 2018-----	57
Table 5.5	Female Active Insured Self-Employed by Selected Characteristics, 2014 - 2018-----	58
Table 5.6	Self-Employed Contributions Collected and their Percentage Distribution by Average Weekly Insurable Earnings, 2014 - 2018-----	59
Table 5.7	Number of Benefits Awarded to Self-Employed Insured Persons During the Year by Branch/Benefit, 2014 - 2018-----	59
Table 5.8	Benefits Expenditure Paid to Self-Employed Insured Persons by Branch/Benefit, 2014 - 2018-----	60
Table 5.9	Ratio of Sickness Benefit Cases Paid to Active Insured Persons by Selected Characteristics, 2014 - 2018--	60

MIGRANT WORKERS ----- 61

Table 6.1	Migrant Workers by Selected Characteristics, 2014 - 2018-----	62
Table 6.2	Number of Migrant Workers by Nationality, 2014 - 2018-----	63
Table 6.3	Number of CARICOM Migrant Workers by Sex and Nationality, 2014 - 2018-----	64
Table 6.4	Active Insured Migrant Workers by Selected Characteristics, 2014 - 2018-----	65
Table 6.5	Male Active Insured Migrant Workers by Selected Characteristics, 2014 - 2018-----	65
Table 6.6	Female Active Insured Migrant Workers by Selected Characteristics, 2014 - 2018-----	66
Table 6.7	Active Insured Migrant Workers and their Percentage Distribution by Industry, 2014 - 2018-----	67
Table 6.8	Active Insured Migrant Workers and their Percentage Distribution by Average Weekly Insurable Earnings, 2014 - 2018-----	68
Table 6.9	Number of Benefits Awarded to Migrant Workers During the Year by Branch/Benefit, 2014 - 2018-----	68
Table 6.10	Benefits Expenditure Paid to Migrant Workers by Branch/Benefit, 2014 - 2018-----	69
Table 6.11	Ratio of Sickness Benefit Cases Paid to Migrant Workers by Selected Characteristics, 2014 - 2018-----	69

KEY INDICATORS

Table 0.1
Key Indicators for Selected Years,
2014 - 2018
(BZ\$)

Key Indicators	2014	2015	2016	2017 ^r	2018 ^p	2017 - 2018 Change	
						Quantity	Percentage
Registration							
Population of Belize	358,899	368,310	377,679	385,766	395,882	10,116	2.6
Population with a Valid SSB Card	300,589	322,223	302,857	306,079	306,891	812	0.3
Percentage of SSB Card Holders in the Population	83.8%	87.5%	80.1%	79.3%	77.5%	(1.8%)	(2.3)
Newly Registered Population	10,226	11,952	10,748	10,118	9,904	(214)	(2.1)
Newly Registered Employers	1,472	1,460	1,456	1,401	1,426	25	1.8
Newly Registered Businesses	1,750	1,636	1,784	1,793	1,959	166	9.3
Newly Registered Self Employed	403	404	521	451	515	64	14.2
Newly Registered Migrant Workers	2,631	3,124	2,379	2,393	1,970	(423)	(17.7)
Contributions							
Employers and Employees Contributions to the SSB Fund	\$72,069,579	\$77,377,011	\$80,091,685	\$82,610,532	\$87,043,419	\$4,432,887	5.4
Active Insured Persons	98,841	102,407	104,198	105,698	108,269	2,571	2.4
New Active Insured Persons	29,674	32,862	29,289	25,446	26,661	1,215	4.8
Percentage of Employed Persons Actively Insured	73.3%	74.1%	72.2%	70.4%	69.4%	(1.0%)	(1.4)
Active Employers	10,589	11,056	11,303	11,494	11,523	29	0.3
Active Businesses	11,493	11,833	12,210	12,416	12,453	37	0.3
Active Self Employed	1,094	1,195	1,390	1,460	1,556	96	6.6
Active Migrant Workers	16,722	17,527	17,507	17,620	17,598	(22)	(0.1)
Benefits							
Benefit Payment Less Benefit Payments for NHI	\$54,967,951	\$59,255,405	\$63,845,496	\$70,502,031	\$74,144,554	\$3,642,523	5.2
Total Claims Processed	61,315	64,548	63,934	78,042	69,914	(8,128)	(10.4)
Benefit Recipients	39,925	42,123	42,278	48,622	45,002	(3,620)	(7.4)
Retired Contributory Pensioners	4,855	5,285	5,797	6,312	6,957	645	10.2
Contributory Pensioners	8,465	9,055	9,834	10,509	11,278	769	7.3
Employment Injury Cases Allowed	1,888	1,922	1,842	1,783	1,746	(37)	(2.1)

Continued on next page . . .

Table 0.1
Key Indicators for Selected Years Continued,
2014 - 2018
(BZ\$)

<i>Key Indicators</i>	<i>2014</i>	<i>2015</i>	<i>2016</i>	<i>2017r</i>	<i>2018p</i>	<i>2017 - 2018 Change</i> <i>Quantity Percentage</i>	
Non-Contributory Pensioners	2,777	2,513	2,214	2,018	1,863	(155)	(7.7)
Payments in Non-Contributory Pensions	\$3,033,412	\$2,754,239	\$2,504,904	\$2,297,370	\$2,009,387	(\$287,983)	(12.5)
Appeals	45	46	39	44	48	4	9.1
National Health Insurance							
GOB Contributions to the NHI Fund	\$15,834,472	\$17,025,004	\$17,000,004	\$17,000,004	\$17,600,004	\$600,000	3.5
Benefit Payments for NHI	\$14,299,110	\$17,936,941	\$16,141,065	\$15,822,665	\$16,305,209	\$482,544	3.0
NHI Operating Expenses	\$728,740	\$757,427	\$787,397	\$931,218	\$957,735	\$26,517	2.8
NHI Administrative Expenditure	\$702,290	\$729,597	\$744,554	\$885,962	\$905,850	\$19,888	2.2
NHI Expenditure (Operating Expenses and Benefit Payments)	\$15,027,850	\$18,694,368	\$16,928,462	\$16,753,883	\$17,262,944	\$509,061	3.0
Total NHI Membership	96,927	97,969	100,794	113,200	117,595	4,395	3.9
NHI Membership in Southside Belize City	49,226	49,401	49,517	47,995	50,112	2,117	4.4
NHI Membership in the Southern Region	47,701	47,701	47,701	50,892	52,744	1,852	3.6
NHI Membership in the Northern Region	0	867	3,576	14,313	14,739	426	3.0
Investments							
Total Investments as at December 31	\$410,154,498	\$440,260,035	\$424,983,429	\$444,127,113	\$456,447,173	\$12,320,060	2.8
Net Investment Income	\$26,186,332	\$24,791,972	\$26,268,696	\$23,888,586	\$20,453,617	(\$3,434,969)	(14.4)
Nominal Rate of Return on Investments (%)	6.8	6.0	6.3	5.7	4.6	(1.0)	(17.8)
Real Rate of Return on Investments (%)	5.6	6.9	5.5	4.5	4.3	(0.2)	(3.7)
Financial Data Including GOB Contributions to the NHI Fund and NHI Expenditures							
Total Income	\$115,196,191	\$120,276,879	\$123,915,010	\$124,583,957	\$126,359,863	\$1,775,906	1.4
Total Contributions	\$87,904,051	\$94,402,015	\$97,091,689	\$99,610,536	\$104,643,423	\$5,032,887	5.1
Total Benefit Payments	\$69,267,061	\$77,192,346	\$79,986,561	\$86,324,696	\$90,449,763	\$4,125,067	4.8
Total Operating Expenses	\$19,394,519	\$20,082,380	\$20,525,964	\$23,722,654	\$23,373,369	(\$349,285)	(1.5)
Administration Expenses	\$18,143,784	\$18,853,531	\$19,278,335	\$22,441,977	\$22,028,413	(\$413,564)	(1.8)
Total Expenditure	\$88,661,580	\$97,274,726	\$100,512,525	\$110,047,350	\$113,823,132	\$3,775,782	3.4
Excess of Income Over Expenditure	\$26,534,611	\$23,002,153	\$23,402,485	\$14,536,607	\$12,536,731	(\$1,999,876)	(13.8)

Continued on next page . . .

Table 0.1
Key Indicators for Selected Years Continued,
2014 - 2018
(BZ\$)

<i>Key Indicators</i>	<i>2014</i>	<i>2015</i>	<i>2016</i>	<i>2017_r</i>	<i>2018_p</i>	<i>2017 - 2018 Change</i> <i>Quantity Percentage</i>	
Financial Data Excluding GOB Contributions to the NHI Fund and NHI Expenditures							
Total Income	\$99,361,719	\$103,251,875	\$106,915,006	\$107,583,953	\$108,759,859	\$1,175,906	1.1
Total Operating Expenses	\$18,665,779	\$19,324,953	\$19,738,567	\$22,791,436	\$22,415,634	(\$375,802)	(1.6)
Administration Expenses	\$17,441,494	\$18,123,934	\$18,533,781	\$21,556,015	\$21,122,563	(\$433,452)	(2.0)
Total Expenditure	\$73,633,730	\$78,580,358	\$83,584,063	\$93,293,467	\$96,560,188	\$3,266,721	3.5
Excess of Income Over Expenditure	\$25,727,989	\$24,671,517	\$23,330,943	\$14,290,486	\$12,199,671	(\$2,090,815)	(14.6)
Total Expenditure to Total Income (Efficiency Ratio)	0.74	0.76	0.78	0.87	0.89	0.0	2.4
Total Expenditure to Contribution Income	1.02	1.02	1.04	1.13	1.11	(0.0)	(1.8)
Benefit Payment as a % of Contribution Income	76.3%	76.6%	79.7%	85.3%	85.2%	(0.2%)	(0.2)
Operating Expenses to Contribution Income Ratio	0.26	0.25	0.25	0.28	0.26	(0.0)	(6.7)
Operating Expenses to Total Income Ratio	0.19	0.19	0.18	0.21	0.21	(0.0)	(2.7)
Administration Expenses to Contribution Income	0.24	0.23	0.23	0.26	0.24	(0.0)	(7.0)
Other							
GDP at Current Market Prices*	\$3,385,911,511	\$3,525,000,877	\$3,613,292,518	\$3,725,229,598	\$3,850,000,000	\$124,770,402	3.3
Total Assets	\$477,731,226	\$501,292,442	\$508,576,234	\$526,751,943	\$547,284,240	\$20,532,297	3.9
Reserves at End of Year	\$469,834,597	\$491,611,255	\$498,940,733	\$512,947,651	\$533,371,666	\$20,424,015	4.0
Reserves as a % of GDP	13.9%	13.9%	13.8%	13.8%	N/A	N/A	N/A
Reserves to Expenditure Ratio	6.38	6.26	5.97	5.50	5.52	0.0	0.5
Investment as a % of Reserves	87.3%	89.6%	85.2%	86.6%	85.6%	(1.0%)	(1.2)
Dependency Ratio (Number of Contributors per Pensioner)	11.72	11.31	10.60	10.06	9.60	(0.5)	(4.6)
Demographic Ratio (Contributory Pensioners per Active Insured Person)	0.09	0.09	0.09	0.10	0.10	0.0	4.8
Customer Satisfaction Rate	N/A	N/A	94.9%	N/A	N/A	N/A	N/A

Source: Social Security Board

Notes: Difference in totals in the Quantity Change section may not be exact due to rounding.

GDP at Current Market Prices for 2018 is an unofficial estimate that was obtained from <https://countryeconomy.com/gdp/belize>.

N/A - Not Available

REGISTRATION

This section presents statistics on registration of all eligible persons in Belize. Indicators include the registration of the general population, businesses, employers and the self-employed. The principal source of the data is the Social Security Board's (SSB) Registration databases. Secondary sources of the data include the Statistical Institute of Belize (SIB) and the Ministry of Health (MOH).

Registration – The Social Security Act, Chapter 44 of the Laws of Belize Revised Edition 2000 – 2003, provides for the mandatory registration of all nationals, registered aliens, holders of work permits and their dependents, regardless of their age. Each person who registers with the SSB is allotted a Social Security number. Minors under the age of 14 years are given a SSB minor card not valid for employment. The eligible working age population 14 to 64 years is given a regular card valid for employment with an expiration date. Senior citizens sixty-five years and over are given a Golden Citizen card without an expiration date. The Social Security Card has become a primary source of identification within the country.

Employer and Business – The term employer is used to indicate that such entity or person is registered and has an account with the SSB for payment of contributions on behalf of employees. An employer may have more than one business. Each business is given a unique business number, which is a sub-account of the existing employer. Therefore, employers can only have one employer number but more than one business number.

Population – The figures used for the Belize population are derived from the census (conducted every 10 years) and mid-year estimates which are sourced from SIB. Data on live births are provided by MOH. These figures are used to compute the number of children registered within the year of birth.

Table 1.1
Percentage of Valid Card Holders in the Population by District,
2014 - 2018

District	Year				
	2014	2015	2016	2017r	2018p
Persons with Valid Cards	300,589	322,223	302,857	306,079	306,891
Corozal	32,500	34,643	33,166	33,703	33,814
Orange Walk	41,581	45,401	43,363	44,160	44,501
Belize	99,962	106,927	99,919	100,129	99,456
Cayo	66,212	69,828	66,720	67,713	68,136
Stann Creek	37,373	40,361	37,165	37,681	37,757
Toledo	22,961	25,063	22,524	22,693	23,227
Population	358,899	368,310	377,969	385,766	395,882
Corozal	44,613	45,530	46,472	47,231	48,217
Orange Walk	48,744	49,466	50,208	50,807	51,583
Belize	107,494	110,645	113,878	116,489	119,876
Cayo	85,243	87,876	90,579	92,760	95,591
Stann Creek	38,728	39,865	41,032	41,975	43,197
Toledo	34,077	34,928	35,800	36,504	37,418
Percentage of Valid Card Holders in the Population	83.8	87.5	80.1	79.3	77.5
Corozal	72.8	76.1	71.4	71.4	70.1
Orange Walk	85.3	91.8	86.4	86.9	86.3
Belize	93.0	96.6	87.7	86.0	83.0
Cayo	77.7	79.5	73.7	73.0	71.3
Stann Creek	96.5	101.2	90.6	89.8	87.4
Toledo	67.4	71.8	62.9	62.2	62.1

Source: Social Security Board and Statistical Institute of Belize

Note: Population data are from mid year estimates based on intercensal growth rates and the Labour Force Surveys.

Table 1.2
Valid Cards by Card Type,
2014 - 2018

Card Type	Year				
	2014	2015	2016	2017r	2018p
Total	300,589	322,223	302,857	306,079	306,891
Minor (< 14 yrs)	66,744	75,318	67,133	65,961	70,720
Adult (14 - 64 yrs)	214,577	223,231	217,589	219,575	216,959
Senior (65+ yrs)	19,268	23,674	18,135	20,543	19,212

Source: Social Security Board

Table 1.3
Newly Registered Persons by Age Group,
2014 - 2018

Age Group	Year				
	2014	2015	2016	2017r	2018p
Total	10,226	11,952	10,748	10,118	9,904
0 - 4	3,699	4,682	4,572	4,704	4,825
5 - 9	1,394	1,486	1,377	1,089	1,167
10 - 14	1,110	1,320	1,087	938	930
15 - 19	993	990	943	791	777
20 - 24	797	910	731	649	559
25 - 29	456	526	415	438	346
30 - 34	331	465	320	305	252
35 - 39	338	346	268	252	215
40 - 44	233	280	217	220	195
45 - 49	216	248	200	184	155
50 - 54	197	185	177	159	135
55 - 59	173	172	147	135	123
60+	289	342	294	254	225

Source: Social Security Board

Table 1.4
Percentage of Newly Registered Persons in the Population by District,
2014 - 2018

District	Year				
	2014	2015	2016	2017r	2018p
Newly Registered	10,226	11,952	10,748	10,118	9,904
Corozal	1,144	1,402	1,216	1,012	1,202
Orange Walk	1,305	1,485	1,538	1,584	1,408
Belize	2,750	3,058	2,916	2,903	2,672
Cayo	2,759	3,257	2,907	2,852	2,646
Stann Creek	1,746	2,157	1,691	1,389	1,053
Toledo	522	593	480	378	923
Population	358,899	368,310	377,969	385,766	395,882
Corozal	44,613	45,530	46,472	47,231	48,217
Orange Walk	48,744	49,466	50,208	50,807	51,583
Belize	107,494	110,645	113,878	116,489	119,876
Cayo	85,243	87,876	90,579	92,760	95,591
Stann Creek	38,728	39,865	41,032	41,975	43,197
Toledo	34,077	34,928	35,800	36,504	37,418
Percentage of Newly Registered	2.8	3.2	2.8	2.6	2.5
Corozal	2.6	3.1	2.6	2.1	2.5
Orange Walk	2.7	3.0	3.1	3.1	2.7
Belize	2.6	2.8	2.6	2.5	2.2
Cayo	3.2	3.7	3.2	3.1	2.8
Stann Creek	4.5	5.4	4.1	3.3	2.4
Toledo	1.5	1.7	1.3	1.0	2.5

Source: Social Security Board and Statistical Institute of Belize

Note: Population Data are from mid year estimates based on intercensal growth rates and the Labour Force Surveys.

Table 1.5
Social Security Registration Coverage of Live Births,
2014 - 2018

	Year				
	2014	2015	2016	2017r	2018p
Live Births	7,328	7,456	7,214	7,245	7,747
Children Registered in Birth Year	1,014	1,250	1,181	1,012	952
Percentage of Live Births Registered	13.8%	16.8%	16.4%	14.0%	12.3%

Source: Ministry of Health and Social Security Board

Table 1.6
Newly Registered Employers by District,
2014 - 2018

District	Year				
	2014	2015	2016	2017r	2018p
Total	1,472	1,460	1,456	1,401	1,426
Corozal	187	201	177	165	160
Orange Walk	178	174	171	168	209
Belize	491	508	527	524	500
Cayo	364	309	308	317	312
Stann Creek	188	200	203	196	202
Toledo	64	68	70	31	43

Source: Social Security Board

Table 1.7
Newly Registered Businesses by District,
2014 - 2018

District	Year				
	2014	2015	2016	2017r	2018p
Total	1,750	1,636	1,784	1,793	1,959
Corozal	231	236	229	201	203
Orange Walk	206	184	223	188	266
Belize	543	567	599	720	717
Cayo	438	331	370	368	426
Stann Creek	229	221	237	253	255
Toledo	103	97	126	63	92

Source: Social Security Board

CONTRIBUTIONS

This section presents data on Contributions made to the SSB and characteristics of the actively Insured Persons (IP's), as well as the active businesses, employers and the self-employed. The principal source of the contribution data is the SSB's database, captured through the Contributions Management System (CMS).

Schedule of Contributions Based on Weekly Insurable Earnings

Weekly Earnings Group	Average Insurable Earnings (BZ\$)	Employees' Contributions (BZ\$)	Employers' Contributions (BZ\$)	Total Weekly Contributions (BZ\$)
Under \$70.00	55.00	0.83	3.57	4.40
\$70.00 to \$109.99	90.00	1.35	5.85	7.20
\$110.00 to \$139.99	130.00	1.95	8.45	10.40
\$140.00 to \$179.99	160.00	3.15	9.65	12.80
\$180.00 to \$219.99	200.00	4.75	11.25	16.00
\$220.00 to \$259.99	240.00	6.35	12.85	19.20
\$260.00 to \$299.99	280.00	7.95	14.45	22.40
\$300.00 and Over	320.00	9.55	16.05	25.60
**	0.00	0.00	2.60	2.60

Source: Social Security Board

Note: ** Applies to persons age 60 - 64 years who have received a retirement benefit and all persons 65 years and older.

Methods of payments - Employers can pay contributions on behalf of their employees in the following ways:

1. *Direct* – is the most commonly used method and payment can be made by visiting any of the nine SSB Branch Offices located in all district towns and five of the most economically active rural areas. At the SSB's Branch Offices, cashiers receive payments and the completed statement of contribution forms with details of the contributions made.
2. *Dropbox* – an assigned public box with a slot into which an employer can place contribution payments via cheques only along with the respective completed Statement of Contributions (FIN15A). A drop box is located at the main entrance of each SSB Branch Office countrywide and is accessible after SSB's normal working hours and on weekends. Upon processing of payments made via the dropbox, SSB sends a receipt via email or through the postal mail to the employer.
3. *Online* – is the most recently introduced method of paying contributions for customers' convenience. Contribution payments can now be paid with four commercial banks. The information on the statement of contribution form is attached along with the online payment information electronically in a predefined text format. The contribution information can be received in hard-copy at the designated banks.
4. *The Government of Belize (GOB)* – makes the payments for its employees by direct deposit and sends the statement of contributions electronically through the GOB payment system.

All contributions collected are accrued into the Social Security Fund and are used to pay benefits and administrative expenditures, and invested to earn income for future expenditures and payment of pensions.

Table 2.1
Total Contributions and Total Benefit Expenditure,
2014 - 2018
(BZ\$)

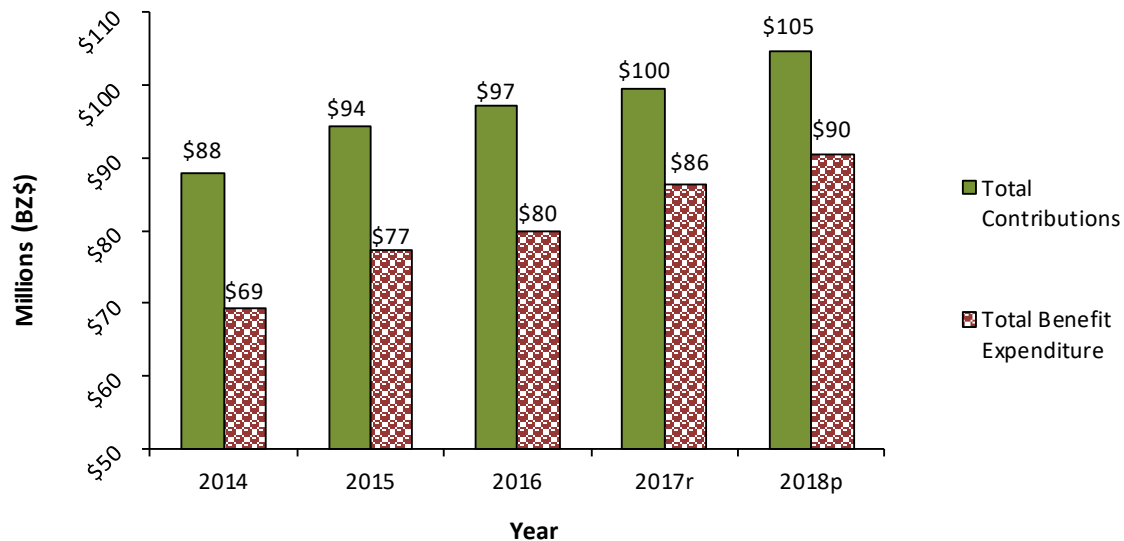
	Year				
	2014	2015	2016	2017r	2018p
Total Contributions	\$87,904,051	\$94,402,015	\$97,091,689	\$99,610,536	\$104,643,423
Total Benefit Expenditure	\$69,267,061	\$77,192,346	\$79,986,561	\$86,324,696	\$90,449,763
Total Benefit Expenditure as a % of Total Contributions	78.8%	81.8%	82.4%	86.7%	86.4%
Contributions (Total Contributions Less GOB Contribution to the NHI Fund)	\$72,069,579	\$77,377,011	\$80,091,685	\$82,610,532	\$87,043,419
Benefit Expenditure (Total Benefit Expenditure Less NHI Expenditures)	\$54,967,951	\$59,255,405	\$63,845,496	\$70,502,031	\$74,144,554
Benefit Expenditure as a % of Contributions	76.3%	76.6%	79.7%	85.3%	85.2%

Source: Social Security Board

Notes: Total Contributions figures represent GOB contributions to the NHI Fund as well as those collected from employers, employees, voluntary and self employed persons.

Total Benefit Expenditure figures represent payments made to the four SSB Benefit Branches and payments made to NHI Primary Care Providers.

Chart 1
Total Contributions and Total Benefit Expenditure,
2014 - 2018

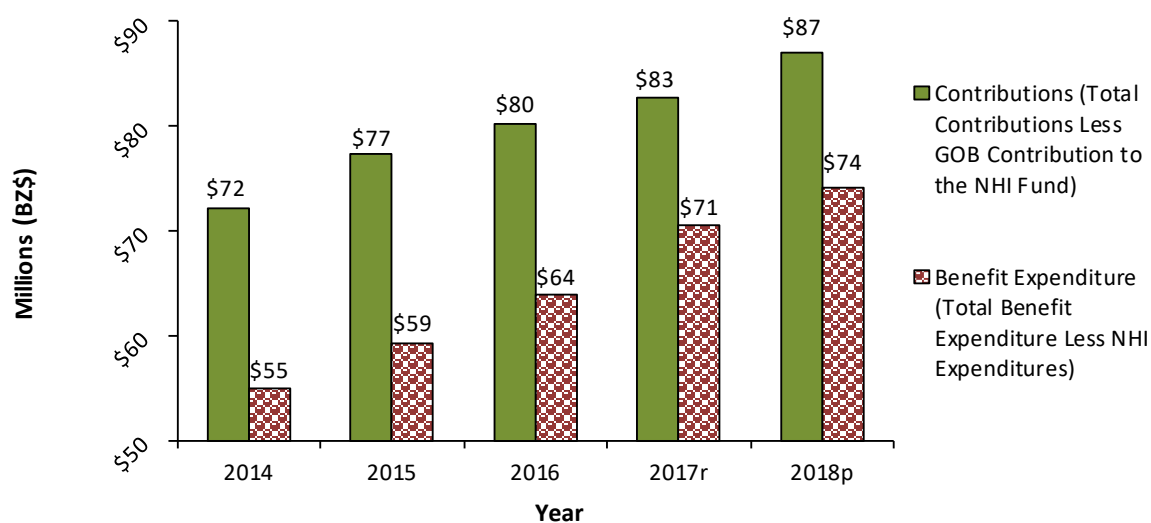


Source: Social Security Board

Notes: Total Contributions figures represent GOB contributions to the NHI Fund as well as those collected from employers, employees, voluntary and self employed persons.

Total Benefit Expenditure figures represent payments made to the four SSB Benefit Branches and payments made to NHI Primary Care Providers.

Chart 2
Contributions and Benefit Expenditure,
2014 - 2018



Source: Social Security Board

Table 2.2
Contributions Collected and its Percentage Distribution by District,
2014 - 2018
(BZ\$)

District	Year									
	2014		2015		2016		2017r		2018p	
	Quantity	%	Quantity	%	Quantity	%	Quantity	%	Quantity	%
Total	\$72,069,579	100.0	\$77,377,011	100.0	\$80,091,685	100.0	\$82,610,532	100.0	\$87,043,419	100.0
Corozal	\$4,242,305	5.9	\$4,328,060	5.6	\$3,959,549	4.9	\$3,849,929	4.7	\$4,108,749	4.7
Orange Walk	\$4,325,866	6.0	\$4,816,940	6.2	\$5,121,111	6.4	\$5,113,144	6.2	\$5,462,090	6.3
Belize	\$32,256,275	44.8	\$34,036,504	44.0	\$35,507,289	44.3	\$36,709,348	44.4	\$39,256,521	45.1
Cayo	\$22,082,756	30.6	\$23,601,242	30.5	\$25,096,756	31.3	\$25,866,680	31.3	\$26,933,456	30.9
Stann Creek	\$7,929,024	11.0	\$9,277,661	12.0	\$9,013,803	11.3	\$9,688,250	11.7	\$9,843,680	11.3
Toledo	\$1,233,353	1.7	\$1,316,604	1.7	\$1,393,179	1.7	\$1,383,180	1.7	\$1,438,923	1.7

Source: Social Security Board

Note: Contributions figures reflect those collected from employers, employees, voluntary and self employed persons.

Table 2.3
Active Insured Persons and the Labour Force Participation Rates,
2014 - 2018

	Year				
	2014	2015	2016	2017r	2018p
Number of Persons in the Labour Force	151,317	153,689	162,254	164,935	172,086
Number of Persons Employed in the Labour Force	134,587	138,145	144,302	150,112	155,950
Number of Active Insured Persons	98,841	102,407	104,198	105,698	108,269
% of Active Insured in the Labour Force	65.2%	66.5%	64.1%	64.1%	62.9%
% of Active Insured in the Employed Force	73.3%	74.0%	72.1%	70.4%	69.4%

Source: Social Security Board and Statistical Institute of Belize

Chart 3
Labour Force, Employed Labour Force and Active Insured Persons,
2014 - 2018



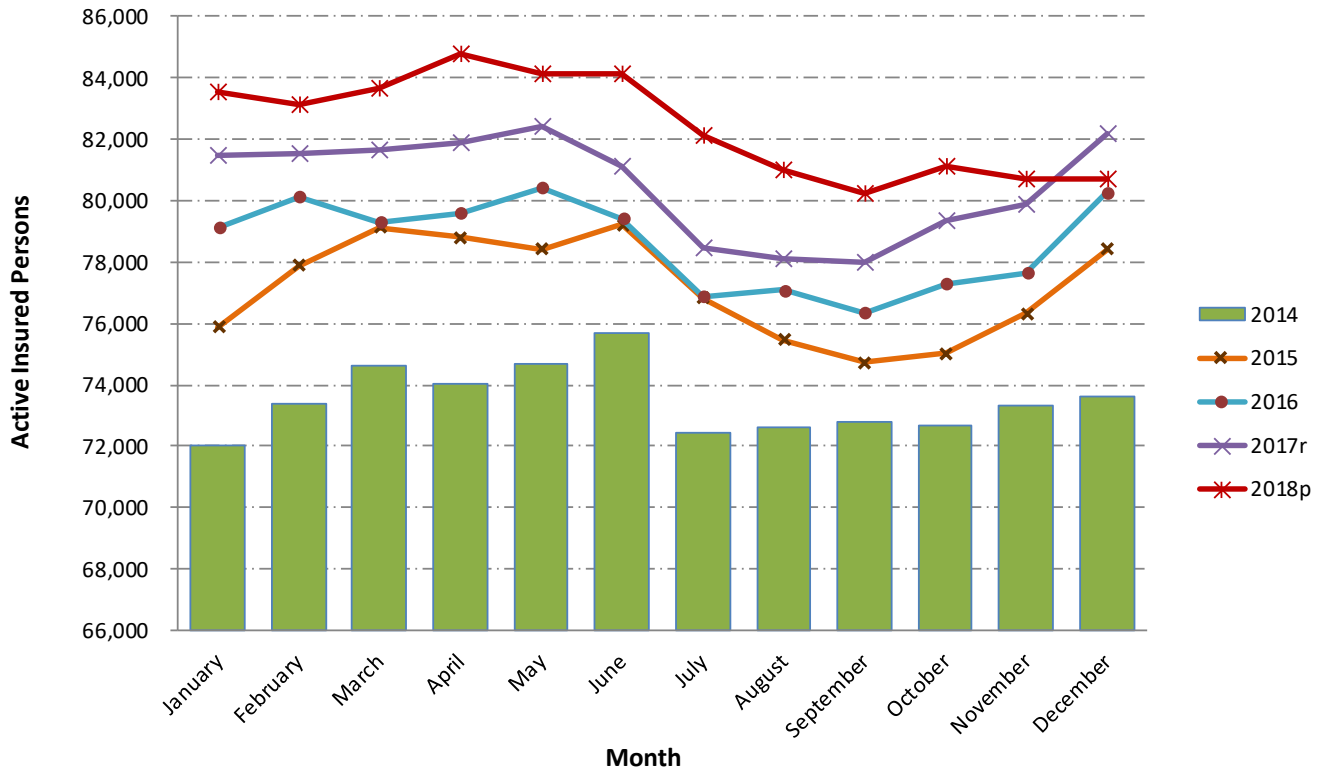
Source: Social Security Board and Statistical Institute of Belize

Table 2.4
Active Insured Persons by District, Sex and Age Group,
2014 - 2018

Selected Characteristics	Year				
	2014	2015	2016	2017r	2018p
Total	98,841	102,407	104,198	105,698	108,269
District					
Corozal	9,371	8,949	8,599	8,201	7,958
Orange Walk	8,648	8,971	9,327	8,972	9,445
Belize	40,651	42,146	43,469	44,747	46,168
Cayo	24,030	25,469	26,003	26,255	26,734
Stann Creek	11,946	12,565	12,322	13,131	13,945
Toledo	4,195	4,307	4,478	4,392	4,019
Sex					
Male	61,665	63,664	64,220	64,826	65,837
Female	37,176	38,743	39,978	5,618	42,432
Age Group					
14 - 24	24,667	25,186	25,398	25,217	25,733
25 - 34	31,588	32,881	33,224	33,803	34,433
35 - 44	22,050	22,793	23,277	23,702	24,384
45 - 54	13,800	14,360	14,847	15,243	15,615
55+	6,736	7,187	7,452	7,733	8,104

Source: Social Security Board

Chart 4
Active Insured Persons by Month,
2014 - 2018



Source: Contributions Database, Social Security Board

Table 2.5
Active Insured Persons and their Percentage Distribution by Industry,
2014 - 2018

Industry	Year									
	2014		2015		2016		2017r		2018p	
	Quantity	%	Quantity	%	Quantity	%	Quantity	%	Quantity	%
Total Active Insured Persons	98,841	100.0	102,407	100.0	104,198	100.0	105,698	100.0	108,269	100.0
Wholesale and Retail Trade; Repair of Motor Vehicles and Motorcycles	14,372	14.5	15,171	14.8	16,184	15.5	16,362	15.5	17,103	16.2
Accommodation and Food Service Activities	12,556	12.7	13,351	13.0	14,245	13.7	15,185	14.4	15,910	15.1
Public Administration and Defence; Compulsory Social Security	16,137	16.3	15,914	15.5	15,279	14.7	14,541	13.8	14,118	13.4
Agriculture	16,001	16.2	16,220	15.8	14,461	13.9	13,914	13.2	13,418	12.7
Construction	9,995	10.1	9,830	9.6	10,106	9.7	9,258	8.8	9,639	9.1
Manufacturing	8,330	8.4	9,271	9.1	9,545	9.2	10,233	9.7	9,415	8.9
Administrative and Support Service Activities	4,961	5.0	5,403	5.3	5,872	5.6	6,159	5.8	7,241	6.9
Education	6,805	6.9	6,842	6.7	6,912	6.6	6,957	6.6	6,848	6.5
Professional, Scientific and Technical Activities	5,002	5.1	4,857	4.7	5,358	5.1	5,167	4.9	6,081	5.8
Transportation and Storage	3,502	3.5	3,648	3.6	3,956	3.8	4,034	3.8	4,000	3.8
Information and Communication	2,336	2.4	2,813	2.7	3,351	3.2	3,708	3.5	3,700	3.5
Financial and Insurance Activities	3,012	3.0	3,106	3.0	3,207	3.1	3,235	3.1	3,363	3.2
Activities of Households as Employers; Undifferentiated Goods & Service Producing Activities of Households for Own Use	2,526	2.6	2,625	2.6	2,974	2.9	2,922	2.8	2,778	2.6
Other Service Activities	2,430	2.5	2,447	2.4	2,409	2.3	2,411	2.3	2,696	2.6
Human Health and Social Work Activities	2,018	2.0	2,101	2.1	2,222	2.1	2,455	2.3	2,442	2.3
Arts, Entertainment and Recreation	2,041	2.1	1,976	1.9	2,039	2.0	1,945	1.8	2,024	1.9
Fishing and Aquaculture	2,519	2.5	2,243	2.2	1,598	1.5	1,477	1.4	1,368	1.3
Water Supply; Sewerage, Waste Management and Remediation Activities	1,116	1.1	1,107	1.1	932	0.9	1,002	0.9	960	0.9
Real Estate Activities	476	0.5	681	0.7	933	0.9	1,048	1.0	926	0.9
Electricity, Gas, Steam and Air Condition Supply	516	0.5	562	0.5	594	0.6	701	0.7	689	0.7
Mining and Quarrying	725	0.7	714	0.7	545	0.5	633	0.6	652	0.6
Activities of Extra-Territorial Organizations and Bodies	327	0.3	362	0.4	376	0.4	433	0.4	438	0.4
Forestry and Logging	308	0.3	405	0.4	390	0.4	313	0.3	292	0.3
Do Not Know or Not Stated	20	0.0	16	0.0	22	0.0	28	0.0	41	0.0

Source: Social Security Board

Notes: The total number of Active Insured Persons shown is not equal to the sum of the Insured Persons in each industry during the respective years due to persons working in different industries during the year.

The sum of the percentages of Insured Persons in each industry does not add up to 100% during the respective years due to persons working in different industries during the year.

Classification of Industry as per International Standard Industrial Classification of Economic Activities Revision 4.

Table 2.6
Active Insured Persons and their Percentage Distribution by Average Weekly Insurable Earnings,
2014 - 2018

Weekly Earnings Group	Year									
	2014		2015		2016		2017r		2018p	
	Quantity	%	Quantity	%	Quantity	%	Quantity	%	Quantity	%
Total	98,841	100.0	102,407	100.0	104,198	100.0	105,698	100.0	108,269	100.0
Under \$70.00	6,603	6.7	5,751	5.6	5,093	4.9	4,717	4.5	4,660	4.3
\$70.00 to \$109.99	8,274	8.4	7,760	7.6	6,661	6.4	6,624	6.3	6,360	5.9
\$110.00 to \$139.99	6,734	6.8	6,461	6.3	5,896	5.7	5,801	5.5	5,873	5.4
\$140.00 to \$179.99	13,955	14.1	14,311	14.0	13,735	13.2	13,125	12.4	13,487	12.5
\$180.00 to \$219.99	11,835	12.0	12,367	12.1	12,655	12.1	12,747	12.1	12,949	12.0
\$220.00 to \$259.99	9,438	9.5	10,301	10.1	11,036	10.6	11,110	10.5	11,296	10.4
\$260.00 to \$299.99	5,512	5.6	6,194	6.0	6,625	6.4	6,616	6.3	6,887	6.4
\$300.00 and Over	35,278	35.7	37,963	37.1	41,180	39.5	43,614	41.3	45,365	41.9
**	1,212	1.2	1,299	1.3	1,317	1.3	1,344	1.3	1,392	1.3

Source: Social Security Board

Note: ** Applies to persons age 60 - 64 years who have received a retirement benefit and all persons 65 years and older.

Table 2.7
Number of Active Insured Persons by Industry and Average Weekly Insurable Earnings,
2017r

Industry	Average Weekly Insurable Earnings										Total
	Under \$70.00	\$70.00 to \$109.99	\$110.00 to \$139.99	\$140.00 to \$179.99	\$180.00 to \$219.99	\$220.00 to \$259.99	\$260.00 to \$299.99	\$300.00 and Over	**	Total	
Total	4,717	6,624	5,801	13,125	12,747	11,110	6,616	43,614	1,344	105,698	
Wholesale and Retail Trade; Repair of Motor Vehicles and Motorcycles	607	1,007	1,110	3,303	3,007	2,210	1,144	3,846	128	16,362	
Accommodation and Food Service Activities	560	999	994	2,307	2,041	1,635	1,030	5,540	79	15,185	
Public Administration and Defence; Compulsory Social Security	378	250	192	877	1,000	1,335	1,032	9,303	174	14,541	
Agriculture	2,154	2,209	1,663	2,348	1,732	1,128	583	1,706	391	13,914	
Manufacturing	447	571	618	1,634	1,574	1,093	623	3,569	104	10,233	
Construction	277	530	490	1,113	1,394	1,300	714	3,352	88	9,258	
Education	79	120	140	232	407	385	255	5,275	64	6,957	
Administrative and Support Service Activities	252	555	354	702	828	797	439	2,171	61	6,159	
Professional, Scientific and Technical Activities	221	615	234	540	636	704	364	1,812	41	5,167	
Transportation and Storage	148	185	222	412	442	444	291	1,833	57	4,034	
Information and Communication	101	169	386	353	354	343	253	1,721	28	3,708	
Financial and Insurance Activities	29	49	56	98	117	240	140	2,482	24	3,235	
Activities of Households as Employers; Undifferentiated Goods & Service Producing Activities of Households for Own Use	255	444	281	662	489	267	93	406	25	2,922	
Human Health and Social Work Activities	28	65	76	166	259	270	180	1,392	19	2,455	
Other Service Activities	80	155	132	345	285	215	129	1,025	45	2,411	
Arts, Entertainment and Recreation	89	96	69	256	268	276	174	693	24	1,945	
Fishing and Aquaculture	268	216	164	231	164	129	55	239	11	1,477	
Real Estate Activities	29	62	30	101	120	144	81	471	10	1,048	
Water Supply; Sewerage, Waste Management and Remediation Activities	65	64	47	126	92	136	57	404	11	1,002	
Electricity, Gas Steam and Air Condition Supply	3	16	6	41	47	50	19	514	5	701	
Mining and Quarrying	32	40	29	59	67	84	23	286	13	633	
Activities of Extra-Territorial Organizations and Bodies	0	4	5	10	18	50	22	324	0	433	
Forestry and Logging	13	13	13	40	62	48	21	93	10	313	
Do Not Know or Not Stated	0	2	0	3	4	6	1	12	0	28	

Source: Social Security Board

Notes: The total number of Active Insured Persons shown is not equal to the sum of the Insured Persons in each industry during the respective years due to persons working in different industries during the year. Classification of Industry as per International Standard Industrial Classification of Economic Activities Revision 4.

** Applies to persons age 60 - 64 years who have received a retirement benefit and all persons 65 years and older.

Table 2.8
Percentage Distribution of Active Insured Persons by Industry and Average Weekly Insurable Earnings, 2017r

Industry	Average Weekly Insurable Earnings										Total
	Under \$70.00	\$70.00 to \$109.99	\$110.00 to \$139.99	\$140.00 to \$179.99	\$180.00 to \$219.99	\$220.00 to \$259.99	\$260.00 to \$299.99	\$300.00 and Over	**	Total	
Total	100.0	100.0	100.0	100.0	100.0	100.0	100.0	100.0	100.0	100.0	100.0
Wholesale and Retail Trade; Repair of Motor Vehicles and Motorcycles	12.9	15.2	19.1	25.2	23.6	19.9	17.3	8.8	9.5	15.5	15.5
Accommodation and Food Service Activities	11.9	15.1	17.1	17.6	16.0	14.7	15.6	12.7	5.9	14.4	14.4
Public Administration and Defence; Compulsory Social Security	8.0	3.8	3.3	6.7	7.8	12.0	15.6	21.3	12.9	13.8	13.8
Agriculture	45.7	33.3	28.7	17.9	13.6	10.2	8.8	3.9	29.1	13.2	13.2
Manufacturing	9.5	8.6	10.7	12.4	12.3	9.8	9.4	8.2	7.7	9.7	9.7
Construction	5.9	8.0	8.4	8.5	10.9	11.7	10.8	7.7	6.5	8.8	8.8
Education	1.7	1.8	2.4	1.8	3.2	3.5	3.9	12.1	4.8	6.6	6.6
Administrative and Support Service Activities	5.3	8.4	6.1	5.3	6.5	7.2	6.6	5.0	4.5	5.8	5.8
Professional, Scientific and Technical Activities	4.7	9.3	4.0	4.1	5.0	6.3	5.5	4.2	3.1	4.9	4.9
Transportation and Storage	3.1	2.8	3.8	3.1	3.5	4.0	4.4	4.2	4.2	3.8	3.8
Information and Communication	2.1	2.6	6.7	2.7	2.8	3.1	3.8	3.9	2.1	3.5	3.5
Financial and Insurance Activities	0.6	0.7	1.0	0.7	0.9	2.2	2.1	5.7	1.8	3.1	3.1
Activities of Households as Employers; Undifferentiated Goods & Service Producing Activities of Households for Own Use	5.4	6.7	4.8	5.0	3.8	2.4	1.4	0.9	1.9	2.8	2.8
Human Health and Social Work Activities	0.6	1.0	1.3	1.3	2.0	2.4	2.7	3.2	1.4	2.3	2.3
Other Service Activities	1.7	2.3	2.3	2.6	2.2	1.9	1.9	2.4	3.3	2.3	2.3
Arts, Entertainment and Recreation	1.9	1.4	1.2	2.0	2.1	2.5	2.6	1.6	1.8	1.8	1.8
Fishing and Aquaculture	5.7	3.3	2.8	1.8	1.3	1.2	0.8	0.5	0.8	1.4	1.4
Real Estate Activities	0.6	0.9	0.5	0.8	0.9	1.3	1.2	1.1	0.7	1.0	1.0
Water Supply; Sewerage, Waste Management and Remediation Activities	1.4	1.0	0.8	1.0	0.7	1.2	0.9	0.9	0.8	0.9	0.9
Electricity, Gas Steam and Air Condition Supply	0.1	0.2	0.1	0.3	0.4	0.5	0.3	1.2	0.4	0.7	0.7
Mining and Quarrying	0.7	0.6	0.5	0.4	0.5	0.8	0.3	0.7	1.0	0.6	0.6
Activities of Extra-Territorial Organizations and Bodies	0.0	0.1	0.1	0.1	0.1	0.5	0.3	0.7	0.0	0.4	0.4
Forestry and Logging	0.3	0.2	0.2	0.3	0.5	0.4	0.3	0.2	0.7	0.3	0.3
Do Not Know or Not Stated	0.0	0.0	0.0	0.0	0.0	0.1	0.0	0.0	0.0	0.0	0.0

Source: Social Security Board

Notes: The sum of the percentages of Insured Persons in each industry does not add up to 100% during the respective years due to persons working in different industries during the year. Classification of Industry as per International Standard Industrial Classification of Economic Activities Revision 4.

** Applies to persons age 60 - 64 years who have received a retirement benefit and all persons 65 years and older.

Table 2.9
Number of Active Insured Persons by Industry and Average Weekly Insurable Earnings,
2018p

Industry	Average Weekly Insurable Earnings										Total
	Under \$70.00	\$70.00 to \$109.99	\$110.00 to \$139.99	\$140.00 to \$179.99	\$180.00 to \$219.99	\$220.00 to \$259.99	\$260.00 to \$299.99	\$300.00 and Over	**	Total	
Total	4,660	6,360	5,873	13,487	12,949	11,296	6,887	45,365	1,392	108,269	
Wholesale and Retail Trade; Repair of Motor Vehicles and Motorcycles	606	1,095	1,131	3,486	3,067	2,391	1,196	3,979	152	17,103	
Accommodation and Food Service Activities	558	1,022	1,003	2,263	2,176	1,724	1,135	5,950	79	15,910	
Public Administration and Defence; Compulsory Social Security	345	137	155	858	966	1,107	1,023	9,357	170	14,118	
Agriculture	1,949	2,065	1,668	2,350	1,577	1,126	604	1,683	396	13,418	
Construction	339	494	476	1,084	1,387	1,479	720	3,557	103	9,639	
Manufacturing	467	637	560	1,547	1,399	1,004	517	3,182	102	9,415	
Administrative and Support Service Activities	360	679	511	820	880	929	518	2,474	70	7,241	
Education	77	101	113	258	384	378	252	5,237	48	6,848	
Professional, Scientific and Technical Activities	230	445	404	750	894	768	517	2,035	38	6,081	
Transportation and Storage	187	174	211	387	464	488	275	1,749	65	4,000	
Information and Communication	97	209	297	340	315	315	229	1,873	25	3,700	
Financial and Insurance Activities	45	35	63	94	127	248	158	2,569	24	3,363	
Activities of Households as Employers; Undifferentiated Goods & Service Producing Activities of Households for Own Use	207	430	278	628	456	256	91	401	31	2,778	
Other Service Activities	88	164	140	302	377	277	153	1,154	41	2,696	
Human Health and Social Work Activities	39	58	70	157	269	283	170	1,377	19	2,442	
Arts, Entertainment and Recreation	81	121	174	393	246	244	152	584	29	2,024	
Fishing and Aquaculture	318	189	80	222	164	111	41	234	9	1,368	
Water Supply; Sewerage, Waste Management and Remediation Activities	57	54	57	115	91	117	42	415	12	960	
Real Estate Activities	29	43	40	88	100	131	73	413	9	926	
Electricity, Gas Steam and Air Condition Supply	7	10	5	60	43	26	26	505	7	689	
Mining and Quarrying	12	32	20	66	64	97	35	313	13	652	
Activities of Extra-Territorial Organizations and Bodies	3	6	0	8	14	41	24	342	0	438	
Forestry and Logging	9	29	5	48	49	50	11	83	8	292	
Do Not Know or Not Stated	1	5	0	4	2	9	3	16	1	41	

Source: Social Security Board

Notes: The total number of Active Insured Persons shown is not equal to the sum of the Insured Persons in each industry during the respective years due to persons working in different industries during the year. Classification of Industry as per International Standard Industrial Classification of Economic Activities Revision 4.

** Applies to persons age 60 - 64 years who have received a retirement benefit and all persons 65 years and older.

Table 2.10
Percentage Distribution of Active Insured Persons by Industry and Average Weekly Insurable Earnings,
2018p

Industry	Average Weekly Insurable Earnings										Total
	Under \$70.00	\$70.00 to \$109.99	\$110.00 to \$139.99	\$140.00 to \$179.99	\$180.00 to \$219.99	\$220.00 to \$259.99	\$260.00 to \$299.99	\$300.00 and Over	**	Total	
Total	100.0	100.0	100.0	100.0	100.0	100.0	100.0	100.0	100.0	100.0	100.0
Wholesale and Retail Trade; Repair of Motor Vehicles and Motorcycles	13.0	17.2	19.3	25.8	23.7	21.2	17.4	8.8	10.9	15.8	15.8
Accommodation and Food Service Activities	12.0	16.1	17.1	16.8	16.8	15.3	16.5	13.1	5.7	14.7	14.7
Public Administration and Defence; Compulsory Social Security	7.4	2.2	2.6	6.4	7.5	9.8	14.9	20.6	12.2	13.0	13.0
Agriculture	41.8	32.5	28.4	17.4	12.2	10.0	8.8	3.7	28.4	12.4	12.4
Construction	7.3	7.8	8.1	8.0	10.7	13.1	10.5	7.8	7.4	8.9	8.9
Manufacturing	10.0	10.0	9.5	11.5	10.8	8.9	7.5	7.0	7.3	8.7	8.7
Administrative and Support Service Activities	7.7	10.7	8.7	6.1	6.8	8.2	7.5	5.5	5.0	6.7	6.7
Education	1.7	1.6	1.9	1.9	3.0	3.3	3.7	11.5	3.4	6.3	6.3
Professional, Scientific and Technical Activities	4.9	7.0	6.9	5.6	6.9	6.8	7.5	4.5	2.7	5.6	5.6
Transportation and Storage	4.0	2.7	3.6	2.9	3.6	4.3	4.0	3.9	4.7	3.7	3.7
Information and Communication	2.1	3.3	5.1	2.5	2.4	2.8	3.3	4.1	1.8	3.4	3.4
Financial and Insurance Activities	1.0	0.6	1.1	0.7	1.0	2.2	2.3	5.7	1.7	3.1	3.1
Activities of Households as Employers; Undifferentiated Goods & Service Producing Activities of Households for Own Use	4.4	6.8	4.7	4.7	3.5	2.3	1.3	0.9	2.2	2.6	2.6
Other Service Activities	1.9	2.6	2.4	2.2	2.9	2.5	2.2	2.5	2.9	2.5	2.5
Human Health and Social Work Activities	0.8	0.9	1.2	1.2	2.1	2.5	2.5	3.0	1.4	2.3	2.3
Arts, Entertainment and Recreation	1.7	1.9	3.0	2.9	1.9	2.2	2.2	1.3	2.1	1.9	1.9
Fishing and Aquaculture	6.8	3.0	1.4	1.6	1.3	1.0	0.6	0.5	0.6	1.3	1.3
Water Supply; Sewerage, Waste Management and Remediation Activities	1.2	0.8	1.0	0.9	0.7	1.0	0.6	0.9	0.9	0.9	0.9
Real Estate Activities	0.6	0.7	0.7	0.7	0.8	1.2	1.1	0.9	0.6	0.9	0.9
Electricity, Gas Steam and Air Condition Supply	0.2	0.2	0.1	0.4	0.3	0.2	0.4	1.1	0.5	0.6	0.6
Mining and Quarrying	0.3	0.5	0.3	0.5	0.5	0.9	0.5	0.7	0.9	0.6	0.6
Activities of Extra-Territorial Organizations and Bodies	0.1	0.1	0.0	0.1	0.1	0.4	0.3	0.8	0.0	0.4	0.4
Forestry and Logging	0.2	0.5	0.1	0.4	0.4	0.4	0.2	0.2	0.6	0.3	0.3
Do Not Know or Not Stated	0.0	0.1	0.0	0.0	0.0	0.1	0.0	0.0	0.1	0.0	0.0

Source: Social Security Board

Notes: The sum of the percentages of Insured Persons in each industry does not add up to 100% during the respective years due to persons working in different industries during the year. Classification of Industry as per International Standard Industrial Classification of Economic Activities Revision 4.

** Applies to persons age 60 - 64 years who have received a retirement benefit and all persons 65 years and older.

Table 2.11
Active Insured Persons within the Tourism Industry by Sex and District,
2015

Tourism Industry	District						Total
	Belize	Cayo	Corozal	Orange Walk	Stann Creek	Toledo	
Total	9,441	3,201	997	658	3,175	687	18,159
Accommodation for Visitors	4,236	1,689	253	154	2,272	332	8,936
Food and Beverage Serving Activities	2,730	943	341	291	590	110	5,005
Road Passenger Transport	162	85	109	150	67	168	741
Water Passenger Transport	373	0	6	0	21	2	402
Air Passenger Transport	663	2	0	0	0	0	665
Transport Equipment Rental	272	6	3	2	22	0	305
Travel Agencies and Other Reservation Services Activities	1,103	204	7	73	220	86	1,693
Cultural Activities	257	331	32	0	178	17	815
Sports and Recreational Activities	382	131	332	10	11	0	866
Female	4,139	1,455	500	328	1,268	218	7,908
Accommodation for Visitors	1,760	657	103	77	805	103	3,505
Food and Beverage Serving Activities	1,654	656	239	235	430	102	3,316
Road Passenger Transport	20	7	10	4	5	3	49
Water Passenger Transport	102	0	1	0	5	0	108
Air Passenger Transport	166	0	0	0	0	0	166
Transport Equipment Rental	65	1	1	2	2	0	71
Travel Agencies and Other Reservation Services Activities	357	70	0	17	77	24	545
Cultural Activities	131	61	8	0	25	0	225
Sports and Recreational Activities	211	87	167	9	4	0	478
Male	5,302	1,746	497	330	1,907	469	10,251
Accommodation for Visitors	2,476	1,032	150	77	1,467	229	5,431
Food and Beverage Serving Activities	1,076	287	102	56	160	8	1,689
Road Passenger Transport	142	78	99	146	62	165	692
Water Passenger Transport	271	0	5	0	16	2	294
Air Passenger Transport	497	2	0	0	0	0	499
Transport Equipment Rental	207	5	2	0	20	0	234
Travel Agencies and Other Reservation Services Activities	746	134	7	56	143	62	1,148
Cultural Activities	126	270	24	0	153	17	590
Sports and Recreational Activities	171	44	165	1	7	0	388

Source: Social Security Board

Tourism Category is based on United Nations World Tourism Organization classification

Notes: The total number of Active Insured Persons shown is not equal to the sum of the Insured Persons in each industry during the respective years due to persons working in different industries during the year.

Table 2.12
Active Insured Persons within the Tourism Industry by Sex and District,
2016

Tourism Industry	District						Total
	Belize	Cayo	Corozal	Orange Walk	Stann Creek	Toledo	
Total	10,093	3,316	1,032	689	3,669	700	19,499
Accommodation for Visitors	4,334	1,599	206	169	2,784	309	9,401
Food and Beverage Serving Activities	3,037	1,087	371	335	682	132	5,644
Road Passenger Transport	174	79	121	130	74	173	751
Water Passenger Transport	331	0	6	0	18	3	358
Air Passenger Transport	743	2	0	0	0	0	745
Transport Equipment Rental	326	8	4	1	23	0	362
Travel Agencies and Other Reservation Services Activities	1,256	209	13	64	295	92	1,929
Cultural Activities	257	344	36	0	152	6	795
Sports and Recreational Activities	385	132	344	10	44	0	915
Female	4,527	1,552	554	388	1,415	241	8,677
Accommodation for Visitors	1,888	633	99	86	937	98	3,741
Food and Beverage Serving Activities	1,795	757	271	268	463	114	3,668
Road Passenger Transport	33	8	9	5	3	3	61
Water Passenger Transport	67	0	1	0	4	0	72
Air Passenger Transport	193	0	0	0	0	0	193
Transport Equipment Rental	77	2	1	1	6	0	87
Travel Agencies and Other Reservation Services Activities	420	69	1	28	91	31	640
Cultural Activities	129	58	11	0	25	0	223
Sports and Recreational Activities	236	79	178	9	16	0	518
Male	5,566	1,764	478	301	2,254	459	10,822
Accommodation for Visitors	2,446	966	107	83	1,847	211	5,660
Food and Beverage Serving Activities	1,242	330	100	67	219	18	1,976
Road Passenger Transport	141	71	112	125	71	170	690
Water Passenger Transport	264	0	5	0	14	3	286
Air Passenger Transport	550	2	0	0	0	0	552
Transport Equipment Rental	249	6	3	0	17	0	275
Travel Agencies and Other Reservation Services Activities	836	140	12	36	204	61	1,289
Cultural Activities	128	286	25	0	127	6	572
Sports and Recreational Activities	149	53	166	1	28	0	397

Source: Social Security Board

Tourism Category is based on United Nations World Tourism Organization classification

Notes: The total number of Active Insured Persons shown is not equal to the sum of the Insured Persons in each industry during the respective years due to persons working in different industries during the year.

Table 2.13
Active Insured Persons within the Tourism Industry by Sex and District,
2017r

Tourism Industry	District						Total
	Belize	Cayo	Corozal	Orange Walk	Stann Creek	Toledo	
Total	10,912	3,133	1,041	702	4,059	656	20,503
Accommodation for Visitors	4,616	1,566	188	178	2,984	303	9,835
Food and Beverage Serving Activities	3,647	1,046	392	341	697	124	6,247
Road Passenger Transport	176	80	108	146	75	170	755
Water Passenger Transport	329	0	5	0	20	3	357
Air Passenger Transport	748	2	0	0	1	0	751
Transport Equipment Rental	344	8	4	1	26	0	383
Travel Agencies and Other Reservation Services Activities	1,352	101	23	38	499	72	2,085
Cultural Activities	250	353	57	0	43	7	710
Sports and Recreational Activities	429	120	327	13	45	1	935
Female	4,810	1,441	563	398	1,543	229	8,984
Accommodation for Visitors	1,974	586	89	82	1,029	107	3,867
Food and Beverage Serving Activities	2,069	726	296	283	474	98	3,946
Road Passenger Transport	32	6	10	9	3	4	64
Water Passenger Transport	66	0	1	0	4	0	71
Air Passenger Transport	183	0	0	0	1	0	184
Transport Equipment Rental	85	1	1	1	2	0	90
Travel Agencies and Other Reservation Services Activities	455	37	7	19	120	25	663
Cultural Activities	118	65	20	0	17	1	221
Sports and Recreational Activities	259	72	163	11	16	0	521
Male	6,102	1,692	478	304	2,516	427	11,519
Accommodation for Visitors	2,642	980	99	96	1,955	196	5,968
Food and Beverage Serving Activities	1,578	320	96	58	223	26	2,301
Road Passenger Transport	144	74	98	137	72	166	691
Water Passenger Transport	263	0	4	0	16	3	286
Air Passenger Transport	565	2	0	0	0	0	567
Transport Equipment Rental	259	7	3	0	24	0	293
Travel Agencies and Other Reservation Services Activities	897	64	16	19	379	47	1,422
Cultural Activities	132	288	37	0	26	6	489
Sports and Recreational Activities	170	48	164	2	29	1	414

Source: Social Security Board

Tourism Category is based on United Nations World Tourism Organization classification

Notes: The total number of Active Insured Persons shown is not equal to the sum of the Insured Persons in each industry during the respective years due to persons working in different industries during the year.

Table 2.14
Active Insured Persons within the Tourism Industry by Sex and District,
2018p

Tourism Industry	District						Total
	Belize	Cayo	Corozal	Orange Walk	Stann Creek	Toledo	
Total	11,185	3,407	1,020	686	4,141	710	21,149
Accommodation for Visitors	4,470	1,717	196	168	3,032	301	9,884
Food and Beverage Serving Activities	3,953	1,122	399	348	755	139	6,716
Road Passenger Transport	206	86	105	133	67	166	763
Water Passenger Transport	321	0	5	0	18	3	347
Air Passenger Transport	748	2	0	0	4	0	754
Transport Equipment Rental	343	12	1	1	22	0	379
Travel Agencies and Other Reservation Services Activities	1,420	101	23	44	507	100	2,195
Cultural Activities	245	391	50	0	43	17	746
Sports and Recreational Activities	439	131	307	16	36	2	931
Female	4,922	1,577	557	395	1,652	239	9,342
Accommodation for Visitors	1,986	661	89	83	1,094	101	4,014
Food and Beverage Serving Activities	2,126	780	293	282	502	107	4,090
Road Passenger Transport	29	6	8	8	2	6	59
Water Passenger Transport	62	0	1	0	3	0	66
Air Passenger Transport	188	0	0	0	4	0	192
Transport Equipment Rental	76	3	1	1	3	0	84
Travel Agencies and Other Reservation Services Activities	459	40	10	19	142	30	700
Cultural Activities	116	72	18	0	18	1	225
Sports and Recreational Activities	263	74	164	14	13	1	529
Male	6,263	1,830	463	291	2,489	471	11,807
Accommodation for Visitors	2,484	1,056	107	85	1,938	200	5,870
Food and Beverage Serving Activities	1,827	342	106	66	253	32	2,626
Road Passenger Transport	177	80	97	125	65	160	704
Water Passenger Transport	259	0	4	0	15	3	281
Air Passenger Transport	560	2	0	0	0	0	562
Transport Equipment Rental	267	9	0	0	19	0	295
Travel Agencies and Other Reservation Services Activities	961	61	13	25	365	70	1,495
Cultural Activities	129	319	32	0	25	16	521
Sports and Recreational Activities	176	57	143	2	23	1	402

Source: Social Security Board

Tourism Category is based on United Nations World Tourism Organization classification

Notes: The total number of Active Insured Persons shown is not equal to the sum of the Insured Persons in each industry during the respective years due to persons working in different industries during the year.

Table 2.15a
Active Insured Persons within the Tourism Industry by Employment Area, Nationality and Sex,
2015 - 2016

Employment Area	2015			2016		
	Nationality			Nationality		
	Total	Belizean	Non-Belizean	Total	Belizean	Non-Belizean
Total	18,159	16,865	1,294	19,499	18,090	1,409
Corozal	997	959	38	1,032	991	41
Orange Walk	658	631	27	689	661	28
Belize	4,678	4,364	314	5,092	4,776	316
Caye Caulker	624	575	49	700	639	61
Ambergris Caye	4,084	3,719	365	4,255	3,874	381
Cayo	3,201	3,009	192	3,316	3,105	211
Stann Creek	1,635	1,514	121	1,811	1,663	148
Placencia	1,469	1,330	139	1,794	1,612	182
Toledo	647	611	36	643	612	31
Other Island	166	153	13	167	157	10
Female	7,908	7,336	572	8,677	8,045	632
Corozal	500	485	15	554	538	16
Orange Walk	328	318	10	388	376	12
Belize	2,223	2,081	142	2,465	2,328	137
Caye Caulker	373	344	29	394	359	35
Ambergris Caye	1,531	1,368	163	1,658	1,479	179
Cayo	1,455	1,367	88	1,552	1,453	99
Stann Creek	734	669	65	793	716	77
Placencia	513	464	49	595	533	62
Toledo	197	188	9	218	205	13
Other Island	54	52	2	60	58	2
Male	10,251	9,529	722	10,822	10,045	777
Corozal	497	474	23	478	453	25
Orange Walk	330	313	17	301	285	16
Belize	2,455	2,283	172	2,627	2,448	179
Caye Caulker	251	231	20	306	280	26
Ambergris Caye	2,553	2,351	202	2,597	2,395	202
Cayo	1,746	1,642	104	1,764	1,652	112
Stann Creek	901	845	56	1,018	947	71
Placencia	956	866	90	1,199	1,079	120
Toledo	450	423	27	425	407	18
Other Island	112	101	11	107	99	8

Source: Social Security Board

Tourism Category is based on United Nations World Tourism Organization classification

Table 2.15b
Active Insured Persons within the Tourism Industry by Employment Area, Nationality and Sex,
2017 - 2018

Employment Area	2017r			2018p		
	Nationality			Nationality		
	Total	Belizean	Non-Belizean	Total	Belizean	Non-Belizean
Total	20,503	19,001	1,502	21,149	19,677	1,472
Corozal	1,041	997	44	1,020	982	38
Orange Walk	702	667	35	686	650	36
Belize	5,424	5,074	350	5,355	5,046	309
Caye Caulker	759	692	67	825	765	60
Ambergris Caye	4,653	4,265	388	4,910	4,520	390
Cayo	3,133	2,937	196	3,407	3,195	212
Stann Creek	2,068	1,913	155	2,218	2,056	162
Placencia	1,925	1,704	221	1,876	1,653	223
Toledo	586	554	32	626	601	25
Other Island	212	198	14	226	209	17
Female	8,984	8,349	635	9,342	8,708	634
Corozal	563	544	19	557	541	16
Orange Walk	398	383	15	395	377	18
Belize	2,603	2,464	139	2,540	2,434	106
Caye Caulker	425	388	37	445	411	34
Ambergris Caye	1,765	1,589	176	1,921	1,729	192
Cayo	1,441	1,349	92	1,577	1,477	100
Stann Creek	848	778	70	953	877	76
Placencia	674	600	74	684	604	80
Toledo	197	187	10	206	199	7
Other Island	70	67	3	64	59	5
Male	11,519	10,652	867	11,807	10,969	838
Corozal	478	453	25	463	441	22
Orange Walk	304	284	20	291	273	18
Belize	2,821	2,610	211	2,815	2,612	203
Caye Caulker	334	304	30	380	354	26
Ambergris Caye	2,888	2,676	212	2,989	2,791	198
Cayo	1,692	1,588	104	1,830	1,718	112
Stann Creek	1,220	1,135	85	1,265	1,179	86
Placencia	1,251	1,104	147	1,192	1,049	143
Toledo	389	367	22	420	402	18
Other Island	142	131	11	162	150	12

Source: Social Security Board

Tourism Category is based on United Nations World Tourism Organization classification

Chart 5
Active Insured Persons in the Tourism Industry,
2015 - 2018

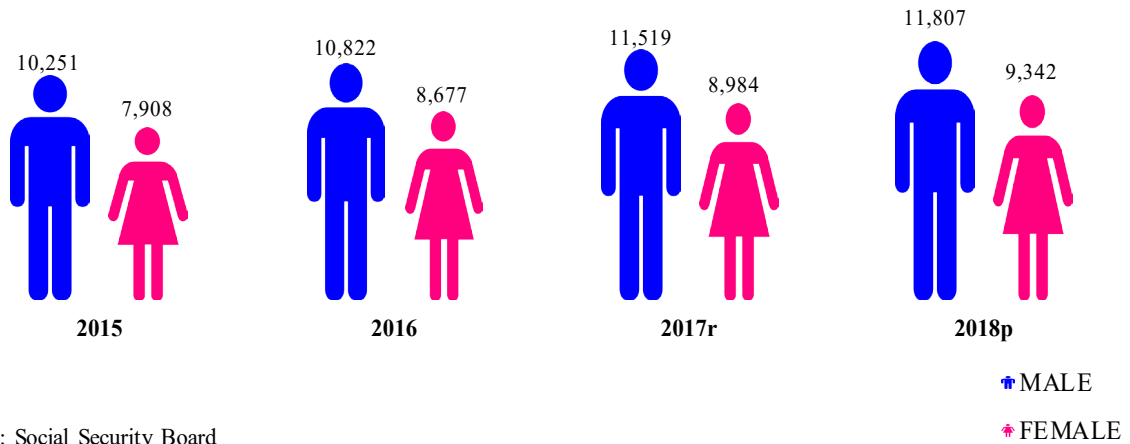


Table 2.16
Active Employers by District,
2014 - 2018

District	Year				
	2014	2015	2016	2017r	2018p
Total	10,589	11,056	11,303	11,494	11,523
Corozal	2,729	2,799	2,675	2,696	2,573
Orange Walk	1,449	1,447	1,505	1,436	1,474
Belize	3,031	3,171	3,363	3,531	3,605
Cayo	2,055	2,112	2,166	2,203	2,220
Stann Creek	990	1,065	1,120	1,160	1,184
Toledo	433	462	474	468	467

Source: Social Security Board

Table 2.17
Active Businesses by Industry,
2014 - 2018

Industry	Year				
	2014	2015	2016	2017r	2018p
Total	11,493	11,833	12,210	12,416	12,453
Agriculture	2,808	2,830	2,712	2,626	2,452
Wholesale and Retail Trade; Repair of Motor Vehicles and Motorcycles	1,690	1,709	1,829	1,915	1,948
Activities of Households as Employers; Undifferentiated Goods & Service Producing Activities of Households for Own Use	1,555	1,653	1,726	1,728	1,734
Accommodation and Food Service Activities	1,351	1,357	1,487	1,560	1,633
Construction	759	839	909	892	873
Manufacturing	579	608	642	659	669
Administrative and Support Service Activities	401	425	444	546	555
Other Service Activities	372	378	384	382	435
Transportation and Storage	342	328	351	359	368
Professional, Scientific and Technical Activities	322	329	333	354	347
Public Administration and Defence; Compulsory Social Security	320	324	328	326	330
Education	205	210	207	202	204
Human Health and Social Work Activities	167	177	196	199	203
Information and Communication	112	119	121	121	125
Financial and Insurance Activities	115	121	120	119	123
Real Estate Activities	78	86	88	102	105
Arts, Entertainment and Recreation	98	100	90	98	105
Water Supply; Sewerage, Waste Management and Remediation Activities	69	70	74	77	71
Forestry and Logging	44	54	51	38	43
Fishing and Aquaculture	40	38	42	40	42
Mining and Quarrying	34	38	33	30	37
Electricity, Gas, Steam and Air Condition Supply	9	16	18	17	25
Activities of Extra-Territorial Organizations and Bodies	17	19	19	19	19
Do Not Know or Not Stated	6	5	6	7	7

Source: Social Security Board

Note: Classification of Industry as per International Standard Industrial Classification of Economic Activities Revision 4.

Table 2.18
Active Businesses and its Percentage Distribution by District,
2014 - 2018

District	Year									
	2014		2015		2016		2017r		2018p	
	Quantity	%	Quantity	%	Quantity	%	Quantity	%	Quantity	%
Total	11,493	100.0	11,833	100.0	12,210	100.0	12,416	100.0	12,453	100.0
Corozal	2,821	24.5	2,887	24.4	2,779	22.8	2,802	22.6	2,670	21.4
Orange Walk	1,539	13.4	1,545	13.1	1,616	13.2	1,550	12.5	1,584	12.7
Belize	3,209	27.9	3,334	28.2	3,569	29.2	3,753	30.2	3,823	30.7
Cayo	2,386	20.8	2,430	20.5	2,505	20.5	2,536	20.4	2,571	20.6
Stann Creek	1,065	9.3	1,139	9.6	1,214	9.9	1,255	10.1	1,291	10.4
Toledo	473	4.1	498	4.2	527	4.3	520	4.2	514	4.1

Source: Social Security Board

Table 2.19
Active Businesses by Number of Employees and Business Type,
2014 - 2018

Business Type	Number of Employees	Year									
		2014		2015		2016		2017r		2018p	
		Quantity	%	Quantity	%	Quantity	%	Quantity	%	Quantity	%
Total		11,493	100.0	11,833	100.0	12,210	100.0	12,416	100.0	12,453	100.0
Micro	1 to 5	7,243	63.0	7,389	62.4	7,791	63.8	8,020	64.6	8,208	65.9
Small	6 to 20	3,179	27.7	3,323	28.1	3,298	27.0	3,270	26.3	3,113	25.0
Medium	21 to 99	873	7.6	912	7.7	909	7.4	911	7.3	902	7.2
Large	100 +	198	1.7	209	1.8	212	1.7	215	1.7	230	1.8

Source: Social Security Board

BENEFITS

This section presents information on social security benefits, Non-Contributory Pension (NCP), and appeals. The primary source of benefits data is the Social Security Board's (SSB) databases. Data on the Mid-Year Population Estimates are obtained from the SIB.

Social Security Coverage – includes employed persons aged 14 to 64 years, including public officers and self-employed persons. Persons aged 65 or older who engage in insurable employment are only covered for work injury benefits as of May 7, 1988 and a reduced contribution of BZ\$2.60 weekly is paid only by the Employer. Not covered are persons engaged in casual labour, persons employed for less than eight (8) hours in a contribution week, and military personnel. Coverage was later expanded to include the Self-Employed and Non-Contributory Pensioners.

Unemployed persons who have met the requirements for voluntary coverage are only covered for Retirement, Survivors' Benefits and Funeral Grant due to natural causes.

Appeals – Legal Services, SSB, oversees the logistical arrangement for all appeals to be heard and further manages the process for appellants to be duly informed of decisions of the tribunal hearing.

Table 3.1
Benefits Expenditure by Branch/Benefit,
2014 - 2018
(BZ\$)

Branch/Benefit	Year				
	2014	2015	2016	2017r	2018p
Total	\$69,267,061	\$77,192,346	\$79,986,561	\$86,324,696	\$90,449,763
Short Term	\$11,987,281	\$13,195,481	\$12,843,089	\$15,232,967	\$14,356,574
Sickness	\$7,882,005	\$8,674,700	\$8,619,821	\$10,656,948	\$9,348,033
Maternity Allowance	\$3,145,796	\$3,516,484	\$3,268,705	\$3,604,593	\$4,013,176
Maternity Grant	\$959,480	\$1,004,297	\$954,563	\$971,426	\$995,366
Long Term	\$36,366,577	\$39,686,805	\$45,082,437	\$49,859,411	\$54,032,583
Retirement	\$23,837,687	\$26,607,593	\$31,085,207	\$35,453,108	\$39,405,171
Survivors	\$5,329,184	\$5,597,329	\$6,781,936	\$7,159,864	\$7,627,724
Invalidity	\$3,071,765	\$3,509,176	\$3,448,671	\$3,588,154	\$3,630,584
Funeral Grant (NC)	\$1,094,529	\$1,218,468	\$1,261,720	\$1,360,915	\$1,359,717
Non-Contributory Pensions	\$3,033,412	\$2,754,239	\$2,504,903	\$2,297,370	\$2,009,387
Employment Injury	\$4,647,877	\$4,283,748	\$3,813,426	\$3,308,764	\$3,662,783
Injury Benefit	\$3,098,317	\$2,517,866	\$2,569,830	\$2,468,525	\$2,348,050
Disablement Grant	\$583,854	\$496,042	\$551,055	\$518,250	\$483,701
Funeral Grant (EI)	\$2,833	\$4,500	\$1,500	\$1,500	\$9,000
APV Disablement and Death	\$962,873	\$1,265,340	\$691,041	\$320,489	\$822,032
Disablement and Death Pension	\$1,966,216	\$2,089,371	\$2,106,544	\$2,100,889	\$2,092,614
National Health Insurance	\$14,299,110	\$17,936,941	\$16,141,065	\$15,822,665	\$16,305,209

Source: Social Security Board

Notes: National Health Insurance Expenditure refers to all payments made to Primary Care Providers.

NC - Natural Causes

EI - Employment Injury

APV - Actuarial Present Value

Table 3.2
New Claims Allowed by Branch/Benefit,
2014 - 2018

Branch/Benefit	Year				
	2014	2015	2016	2017r	2018p
Total	37,729	40,087	40,080	48,902	42,461
Short Term	33,400	35,543	35,365	44,275	37,810
Sickness	28,973	30,929	30,926	39,739	33,011
Maternity Allowance	1,240	1,285	1,271	1,341	1,465
Maternity Grant	3,187	3,329	3,168	3,195	3,334
Long Term	2,061	2,333	2,579	2,684	2,757
Retirement	830	981	1,118	1,181	1,300
Survivors	300	110	111	390	371
Invalidity	100	323	420	108	88
Funeral Grant (NC)	831	919	930	1,005	998
Employment Injury	2,268	2,211	2,136	1,943	1,884
Injury	1,888	1,922	1,842	1,783	1,746
Disablement	365	278	286	147	129
Death Benefit	12	8	7	12	13
Funeral Grant (EI)	3	3	1	1	6

Source: Social Security Board

Notes: Retirement, Survivors', Invalidity, Disablement and Death Benefits include those that have received either a pension or a grant.

The large increase of 8,813 (or 28.5%) New Benefit Claims Allowed observed from 2016 to 2017 was principally due to outbreak of Conjunctivitis (Pink Eye) that occurred between September to November of 2017.

NC - Natural Causes

EI - Employment Injury

Table 3.3
Benefit Recipients by Branch/Benefit,
2014 - 2018

Branch/Benefit	Year				
	2014	2015	2016	2017r	2018p
Total	39,925	42,123	42,278	48,622	45,002
Short Term	25,228	26,814	26,630	32,355	28,209
Sickness	20,815	22,216	22,213	27,831	23,425
Maternity Allowance	1,240	1,277	1,258	1,335	1,454
Maternity Grant	3,173	3,321	3,159	3,189	3,330
Long Term	11,976	12,574	12,979	13,682	14,225
Retirement	5,180	5,673	6,228	6,786	7,418
Survivors	2,793	3,061	3,190	3,442	3,414
Invalidity	399	413	418	428	534
Funeral Grant (NC)	827	914	929	1,008	996
Non-Contributory Pensions	2,777	2,513	2,214	2,018	1,863
Employment Injury	2,721	2,735	2,669	2,585	2,568
Injury	1,828	1,868	1,794	1,728	1,697
Disablement	596	586	608	598	596
Death Benefit	294	278	266	258	269
Funeral Grant (EI)	3	3	1	1	6

Source: Social Security Board

Notes: Retirement, Survivors', Invalidity, Disablement and Death Benefits include those that have received either a pension or a grant.

The large increase of 5,618 (or 25.3%) New Sickness Benefit Recipients observed from 2016 to 2017 was largely due to outbreak of Conjunctivitis (Pink Eye) that occurred between September to November of 2017.

NC - Natural Causes

EI - Employment Injury

Table 3.4
Total Number of Sickness Benefit Days Claimed within each Sickness Benefit Days Group,
2014 - 2018

Sickness Benefit Days Group	Year				
	2014	2015	2016	2017r	2018p
Total	271,346	289,466	286,461	351,319	284,526
1	1,827	2,021	2,050	2,286	2,556
2	9,452	9,702	10,472	10,684	11,974
3	16,548	17,688	17,211	18,999	19,428
4 - 7	50,767	54,017	53,817	82,325	52,996
8 - 14	38,472	42,013	40,273	61,695	40,748
15 - 21	22,461	24,000	20,924	25,160	21,441
22 - 28	12,088	12,678	12,238	13,751	11,886
29 - 35	14,013	16,967	17,117	17,333	16,707
36 - 42	8,002	9,072	8,866	9,976	8,462
43 - 49	9,064	9,425	7,893	8,934	8,118
50 - 56	5,982	6,434	6,782	6,613	6,153
57 - 63	9,040	9,066	9,201	8,938	9,807
64 - 70	5,877	5,449	7,175	6,487	5,979
71 - 77	4,127	4,018	5,906	5,547	5,667
78 - 84	3,793	3,237	3,865	4,999	4,292
85 - 91	4,795	4,325	4,337	4,320	5,042
92 - 98	4,358	5,014	5,192	4,353	5,842
99 - 105	2,567	3,646	2,552	2,855	4,787
106 - 112	3,143	2,717	2,606	1,846	2,737
113 - 119	1,510	1,275	2,322	2,659	3,494
120 - 126	2,588	2,707	3,315	2,802	2,095
127 - 133	1,429	1,945	2,607	3,132	2,868
134 - 140	1,787	1,775	2,051	2,619	2,335
141 - 147	2,026	1,438	1,737	1,446	856
148 - 156	1,975	3,052	1,522	2,910	2,902
157 - 234	33,655	35,785	34,430	38,650	25,354

Source: Social Security Board

Table 3.5
Mean Benefit Payment by Sickness Benefit Days Group,
2014 - 2018
(BZ\$)

Sickness Benefit Days Group	Year				
	2014	2015	2016	2017r	2018p
1	\$32	\$31	\$32	\$32	\$32
2	\$62	\$62	\$63	\$64	\$65
3	\$91	\$92	\$94	\$95	\$96
4 - 7	\$156	\$158	\$161	\$163	\$162
8 - 14	\$304	\$305	\$312	\$310	\$322
15 - 21	\$498	\$506	\$532	\$533	\$536
22 - 28	\$725	\$726	\$750	\$759	\$780
29 - 35	\$921	\$929	\$979	\$990	\$1,006
36 - 42	\$1,153	\$1,167	\$1,156	\$1,194	\$1,238
43 - 49	\$1,377	\$1,384	\$1,435	\$1,475	\$1,440
50 - 56	\$1,596	\$1,591	\$1,639	\$1,627	\$1,608
57 - 63	\$1,862	\$1,736	\$1,826	\$1,882	\$1,850
64 - 70	\$1,932	\$2,042	\$2,027	\$2,172	\$2,003
71 - 77	\$2,269	\$2,237	\$2,358	\$2,204	\$2,386
78 - 84	\$2,360	\$2,435	\$2,349	\$2,561	\$2,647
85 - 91	\$2,631	\$2,692	\$2,662	\$2,660	\$2,768
92 - 98	\$2,689	\$2,756	\$2,871	\$2,836	\$2,906
99 - 105	\$2,872	\$3,028	\$3,303	\$3,215	\$3,021
106 - 112	\$3,206	\$2,982	\$3,032	\$3,585	\$3,537
113 - 119	\$3,176	\$3,336	\$3,571	\$3,834	\$3,746
120 - 126	\$3,462	\$3,473	\$3,622	\$3,770	\$3,621
127 - 133	\$3,315	\$3,735	\$4,069	\$4,067	\$4,031
134 - 140	\$3,890	\$3,611	\$4,575	\$4,302	\$4,695
141 - 147	\$4,379	\$4,554	\$4,750	\$4,656	\$4,431
148 - 156	\$4,324	\$4,584	\$4,440	\$4,550	\$4,867
157 - 234	\$5,812	\$6,153	\$5,934	\$6,046	\$5,986
Mean Annual Payment (BZ\$)	\$270	\$271	\$283	\$273	\$271

Source: Social Security Board

Note: Mean annual payment refers to the average cost per allowed claim.

Table 3.6
Sickness Benefit by Selected Characteristics,
2014 - 2018

Selected Characteristics	Year				
	2014	2015	2016	2017r	2018p
Number of Claims Processed	32,445	34,577	34,703	44,742	37,481
Age Group					
14 - 19	927	1,156	1,005	1,298	946
20 - 24	5,195	5,578	5,659	7,199	5,983
25 - 29	6,603	7,070	7,011	9,053	7,613
30 - 34	5,562	5,940	5,960	7,859	6,755
35 - 39	4,504	4,786	4,611	6,138	5,128
40 - 44	3,644	3,656	3,737	4,781	3,976
45 - 49	2,736	2,848	3,016	3,755	3,096
50 - 54	1,994	2,111	2,133	2,682	2,354
55 - 64	1,280	1,432	1,571	1,977	1,630
Average Days Claimed	10	10	9	9	9
Age Group					
14 - 19	8	8	9	7	6
20 - 24	8	7	7	7	7
25 - 29	9	8	7	8	7
30 - 34	9	9	9	8	8
35 - 39	10	9	9	9	9
40 - 44	11	10	9	9	9
45 - 49	13	11	9	11	11
50 - 54	14	13	12	12	12
55 - 64	15	14	13	13	12
Sex	32,445	34,577	34,703	44,742	37,481
Male	16,995	17,937	17,658	23,329	18,712
Female	15,450	16,640	17,045	21,413	18,769

Source: Social Security Board

Notes: The large increase of 9,514 (or 27.4%) Sickness Benefit Claims Processed observed from 2016 to 2017 was primarily due to outbreak of Conjunctivitis (Pink Eye) that occurred between September to November of 2017.

Table 3.7
Sickness Benefit Claims Paid by Industry,
2014 - 2018

Industry	Year				
	2014	2015	2016	2017r	2018p
Total	28,973	30,929	30,926	39,739	33,011
Public Administration and Defence; Compulsory Social Security	6,834	7,102	7,726	10,341	8,781
Wholesale and Retail Trade; Repair of Motor Vehicles and Motorcycles	3,330	3,363	3,319	4,565	3,485
Accommodation and Food Service Activities	2,224	2,341	2,355	3,209	2,521
Manufacturing	2,172	2,467	2,384	3,175	2,359
Information and Communication	1,083	1,344	1,696	1,987	1,786
Education	1,394	1,489	1,595	2,316	1,735
Administrative and Support Service Activities	976	1,170	1,233	1,782	1,693
Financial and Insurance Activities	1,477	1,400	1,506	1,828	1,680
Human Health and Social Work Activities	1,239	1,358	1,393	1,631	1,500
Professional, Scientific and Technical Activities	1,248	1,685	1,566	1,326	1,289
Agriculture	1,976	2,050	1,410	1,675	1,185
Construction	1,019	881	898	1,330	1,098
Transportation and Storage	833	908	889	1,184	1,039
Arts, Entertainment and Recreation	972	976	866	771	672
Other Service Activities	340	393	466	514	470
Activities of Households as Employers; Undifferentiated Goods & Service Producing Activities of Households for Own Use	334	377	425	570	429
Water Supply; Sewerage, Waste Management and Remediation Activities	423	295	262	367	315
Electricity, Gas, Steam and Air Condition Supply	280	276	271	323	292
Activities of Extra-Territorial Organizations and Bodies	146	184	174	242	239
Real Estate Activities	60	92	118	157	149
Mining and Quarrying	198	164	120	144	126
Fishing and Aquaculture	378	561	197	239	116
Forestry and Logging	30	47	51	63	52
Do Not Know or Not Stated	7	6	6	0	0

Source: Social Security Board

Notes: Classification of Industry as per International Standard Industrial Classification of Economic Activities Revision 4.

The large increase of 8,620 (or 27.9%) Sickness Benefit Claims observed from 2016 to 2017 was chiefly due to outbreak of Conjunctivitis (Pink Eye) that occurred between September to November of 2017.

Table 3.8
Maternity Allowance by Selected Characteristics,
2014 - 2018

Selected Characteristics	Year				
	2014	2015	2016	2017r	2018p
Claims Allowed	1,240	1,285	1,271	1,341	1,465
Age Group					
14 - 19	38	34	33	36	40
20 - 24	290	321	336	345	353
25 - 29	428	458	430	429	499
30 - 34	297	302	292	355	347
35 - 39	164	138	145	155	180
40 - 44	22	31	32	19	45
45 - 64	1	1	3	2	1
Weeks Claimed					
< 14 Weeks	80	69	57	68	76
14 Weeks	1,160	1,216	1,214	1,273	1,389
Mean Annual Payment (BZ\$)	\$2,604	\$2,686	\$2,591	\$2,746	\$2,779
Age Group					
14 - 19	\$2,052	\$1,919	\$1,908	\$1,909	\$2,187
20 - 24	\$2,348	\$2,425	\$2,370	\$2,506	\$2,555
25 - 29	\$2,630	\$2,788	\$2,625	\$2,811	\$2,814
30 - 34	\$2,822	\$2,867	\$2,820	\$2,898	\$2,954
35 - 39	\$2,718	\$2,687	\$2,684	\$2,934	\$2,879
40 - 44	\$2,584	\$3,019	\$2,667	\$2,899	\$2,955
45 - 64	\$3,584	\$1,008	\$2,309	\$2,274	\$1,008

Source: Social Security Board

Note: Mean annual payment refers to the average cost per allowed claim.

Table 3.9
Maternity Grants Paid by Age Group and Sex,
2014 - 2018

Age Group	Year				
	2014	2015	2016	2017r	2018p
Total	3,187	3,329	3,168	3,195	3,334
14 - 19	78	85	68	87	89
20 - 24	710	804	820	793	799
25 - 29	1,002	1,079	970	1,003	1,038
30 - 34	725	696	699	734	755
35 - 39	420	399	372	375	409
40 - 44	150	166	140	122	158
45 - 49	57	53	57	47	42
50 - 54	30	23	33	24	32
55 - 59	13	18	8	10	12
60+	2	6	1	0	0
Male*	1,904	1,959	1,849	1,812	1,852
14 - 19	45	50	36	50	54
20 - 24	415	461	479	439	446
25 - 29	559	594	530	561	535
30 - 34	416	378	383	368	393
35 - 39	245	246	220	216	226
40 - 44	124	131	105	99	114
45 - 49	55	52	54	45	41
50 - 54	30	23	33	24	31
55 - 59	13	18	8	10	12
60+	2	6	1	0	0
Female	1,283	1,370	1,319	1,383	1,482
14 - 19	33	35	32	37	35
20 - 24	295	343	341	354	353
25 - 29	443	485	440	442	503
30 - 34	309	318	316	366	362
35 - 39	175	153	152	159	183
40 - 44	26	35	35	23	44
45 - 49	2	1	3	2	1
50 - 54	0	0	0	0	1
55 - 59	0	0	0	0	0
60+	0	0	0	0	0

Source: Social Security Board

Note: *Maternity grants are payable to male insured persons who present proof of paternity. A grant is not paid to fathers in respect of a child for whom an insured mother has claimed.

Table 3.10
Pensions by Recipients at Year End and Expenditure,
2014 - 2018

Pension	Year				
	2014	2015	2016	2017r	2018p
Total Recipient	11,242	11,568	12,048	12,527	13,141
Contributory Pensioners	8,465	9,055	9,834	10,509	11,278
Retirement	4,855	5,285	5,797	6,312	6,957
Invalidity	385	413	449	480	500
Survivors'	2,472	2,614	2,853	2,987	3,074
Disablement	459	465	469	472	478
Death	294	278	266	258	269
Non-Contributory Pensioners	2,777	2,513	2,214	2,018	1,863
Total Expenditure (BZ\$)	\$34,653,735	\$37,675,512	\$42,652,368	\$47,776,838	\$52,035,039
Contributory Pensioners	\$31,620,322	\$34,921,273	\$40,147,464	\$45,479,468	\$50,025,652
Retirement	\$22,676,899	\$25,314,254	\$29,596,788	\$33,933,080	\$37,767,713
Invalidity	\$2,264,620	\$2,633,990	\$2,857,094	\$3,197,738	\$3,380,457
Survivors'	\$4,712,587	\$4,883,658	\$5,587,038	\$6,247,760	\$6,784,868
Disablement	\$1,315,631	\$1,356,723	\$1,442,446	\$1,453,451	\$1,446,074
Death	\$650,585	\$732,647	\$664,098	\$647,438	\$646,540
Non-Contributory Pensioners	\$3,033,412	\$2,754,239	\$2,504,904	\$2,297,370	\$2,009,387

Source: Social Security Board

Note: Due to rounding total expenditure may not add up.

Table 3.11
Retirement Pensions Awarded During the Year by Age, Sex and Mean Annual Payment,
2014 - 2018

Age	Year				
	2014	2015	2016	2017r	2018p
Total	491	591	645	696	801
60	208	274	276	300	389
61	71	97	114	122	123
62	47	45	59	52	72
63	26	32	31	39	32
64	14	19	18	31	27
65	92	89	108	106	111
66	23	27	26	31	37
67	7	2	7	6	7
68	3	2	2	4	0
69+	0	4	4	5	3
Male	333	354	415	439	514
60	127	141	163	176	217
61	51	60	75	73	91
62	35	27	36	30	50
63	18	20	23	28	19
64	7	16	15	19	21
65	71	64	78	78	82
66	19	20	15	23	26
67	3	2	5	5	6
68	2	2	2	4	0
69+	0	2	3	3	2
Female	158	237	230	257	287
60	81	133	113	124	172
61	20	37	39	49	32
62	12	18	23	22	22
63	8	12	8	11	13
64	7	3	3	12	6
65	21	25	30	28	29
66	4	7	11	8	11
67	4	0	2	1	1
68	1	0	0	0	0
69+	0	2	1	2	1
Mean Annual Payment (BZ\$)					
Total	\$5,961	\$5,928	\$6,398	\$6,516	\$5,247
Male	\$5,810	\$5,976	\$6,283	\$6,445	\$5,222
Female	\$6,287	\$5,859	\$6,604	\$6,639	\$5,297

Source: Social Security Board

Note: Mean annual payment refers to the average annual cost per allowed claim.

Table 3.12
Retirement Grants Awarded by Age, Sex and Mean Annual Payment,
2014 - 2018

	Year				
	2014	2015	2016	2017r	2018p
Age					
Total	325	415	431	458	461
60	121	144	173	122	163
61	38	51	68	76	64
62	24	37	35	46	44
63	22	23	24	35	28
64	27	38	21	31	27
65	52	64	41	52	64
66	9	20	27	36	18
67	11	13	16	21	17
68	7	3	9	12	10
69+	14	22	17	27	26
Male	205	274	270	287	294
60	80	93	96	65	86
61	23	26	43	44	38
62	17	19	22	31	29
63	14	18	12	21	19
64	16	26	16	17	19
65	25	48	28	41	54
66	3	13	21	27	14
67	7	12	14	15	11
68	7	2	7	7	5
69+	13	17	11	19	19
Female	120	141	161	171	167
60	41	51	77	57	77
61	15	25	25	32	26
62	7	18	13	15	15
63	8	5	12	14	9
64	11	12	5	14	8
65	27	16	13	11	10
66	6	7	6	9	4
67	4	1	2	6	6
68	0	1	2	5	5
69+	1	5	6	8	7
Mean Annual Payment (BZ\$)					
Total	\$3,592	\$3,555	\$3,348	\$3,430	\$3,575
Male	\$3,708	\$3,966	\$3,624	\$3,568	\$3,905
Female	\$3,375	\$2,870	\$2,798	\$3,198	\$2,994

Source: Social Security Board

Note: Mean annual payment refers to the average cost per allowed claim.

Table 3.13
'Invalidity Pensioners at Year End by Age Group and Sex,
2014 - 2018

Age Group	Year				
	2014	2015	2016	2017r	2018p
Total	385	413	449	480	500
< 20	0	0	0	0	0
20 - 24	0	0	0	1	1
25 - 29	0	1	1	4	7
30 - 34	4	7	10	10	10
35 - 39	18	22	22	25	26
40 - 44	35	44	47	55	61
45 - 49	74	80	90	99	105
50 - 54	95	104	118	132	142
55 - 59	120	120	128	123	119
60 - 64	39	35	0	31	29
65+	0	0	0	0	0
Male	176	225	245	259	271
< 20	0	0	0	0	0
20 - 24	0	0	0	1	1
25 - 29	0	1	1	4	7
30 - 34	1	4	5	6	7
35 - 39	7	14	16	16	15
40 - 44	11	28	29	35	37
45 - 49	31	44	49	48	54
50 - 54	50	51	58	68	72
55 - 59	58	65	71	65	62
60 - 64	18	18	16	16	16
65+	0	0	0	0	0
Female	209	188	204	221	229
< 20	0	0	0	0	0
20 - 24	0	0	0	0	0
25 - 29	0	0	0	0	0
30 - 34	3	3	5	4	3
35 - 39	11	8	6	9	11
40 - 44	24	16	18	20	24
45 - 49	43	36	41	51	51
50 - 54	45	53	60	64	70
55 - 59	62	55	57	58	57
60 - 64	21	17	17	15	13
65+	0	0	0	0	0

Source: Social Security Board

Note: 'Includes all persons declared by a medical board as permanently "incapable to work" as a result from a specific disease or bodily or mental disablement and are receiving a Social Security Invalidity Pension.

Table 3.14
¹Spouses Receiving Survivors' Pension at Year End by Sex and Mean Annual Payment,
2014 - 2018

Selected Characteristics	Year				
	2014	2015	2016	2017 ^r	2018 ^p
Sex					
Total	1,175	1,234	1,325	1,384	1,451
Male	22	18	16	13	14
Female	1,153	1,216	1,309	1,371	1,437
Mean Annual Payment (BZ\$)	\$2,976	\$3,060	\$3,275	\$3,420	\$3,486

Source: Social Security Board

Notes: Mean annual payment refers to the average annual cost per allowed claim.

¹Includes all persons classified as spouses in receipt of a Social Security Survivors' Pension.

Table 3.15
Children Awarded Survivors' Pension During the Year by Age Group,
Sex and Mean Annual Payment,
2014 - 2018

Age Group	Year				
	2014	2015	2016	2017 ^r	2018 ^p
Total	192	172	202	180	194
00 - 04	30	28	40	24	25
05 - 09	37	44	56	43	36
10 - 14	62	46	69	63	64
15 - 16	33	22	20	24	24
17 - 21	29	25	14	23	37
22+	1	7	3	3	8
Male	103	77	101	86	104
00 - 04	14	14	18	12	12
05 - 09	16	19	36	24	20
10 - 14	33	19	30	31	33
15 - 16	25	12	8	7	15
17 - 21	14	9	6	9	21
22+	1	4	3	3	3
Female	89	95	101	94	90
00 - 04	16	14	22	12	13
05 - 09	21	25	20	19	16
10 - 14	29	27	39	32	31
15 - 16	8	10	12	17	9
17 - 21	15	16	8	14	16
22+	0	3	0	0	5
Mean Annual Payment (BZ\$)	\$1,761	\$1,776	\$1,773	\$1,780	\$1,844

Source: Social Security Board

Note: Mean annual payment refers to the average annual cost per allowed claim.

Table 3.16
'Children Receiving Survivors' Pension at Year End
by Age Group, Sex and Mean Annual Payment,
2014 - 2018

Age Group	Year				
	2014	2015	2016	2017 ^r	2018 ^p
Total	1,400	1,381	1,464	1,541	1,589
00 - 04	75	67	87	86	82
05 - 09	246	250	264	280	275
10 - 14	474	469	508	510	520
15 - 16	246	238	251	262	265
17 - 21	264	259	309	364	386
22+	95	98	45	39	61
Male	711	696	744	786	812
00 - 04	38	32	41	44	39
05 - 09	138	137	150	154	144
10 - 14	244	233	250	259	276
15 - 16	126	135	130	114	126
17 - 21	123	115	147	191	198
22+	42	44	26	24	29
Female	689	685	720	755	777
00 - 04	37	35	46	42	43
05 - 09	108	113	114	126	131
10 - 14	230	236	258	251	244
15 - 16	120	103	121	148	139
17 - 21	141	144	162	173	188
22+	53	54	19	15	32
Mean Annual Payment (BZ\$)	\$1,513	\$1,548	\$1,591	\$1,651	\$1,717

Source: Social Security Board

Notes: Mean annual payment refers to the average annual cost per orphan.

¹Includes all persons classified as dependent children as per Act in receipt of a Social Security Survivors' Benefit.

Table 3.17
'Dead Insured Persons by Number of Surviving Orphans and Year,
2014 - 2018

Number of Orphans	Year				
	2014	2015	2016	2017r	2018p
Total	192	172	202	180	194
1	11	38	41	36	21
2	31	64	60	36	54
3	45	27	42	48	45
4	42	24	32	32	47
5	33	0	15	15	9
6	15	12	12	6	8
7+	15	7	0	7	10

Source: Social Security Board

Note: 'Dead Insured Persons who met the requirements to receive a Retirement or Invalidation Pension.

Table 3.18
'Dead Insured Persons by Number of Surviving Spouses
and Parents, Sex and Year,
2014 - 2018

Sex	Year				
	2014	2015	2016	2017r	2018p
Total Spouses	135	125	153	134	149
Male	2	0	0	0	2
Female	133	125	153	134	147
Total Parents	7	13	7	2	2
1	5	12	7	2	2
2	2	1	0	0	0
Male	3	6	2	1	2
1	2	5	2	1	2
2	1	1	0	0	0
Female	4	7	5	1	0
1	3	7	5	1	0
2	1	0	0	0	0

Source: Social Security Board

Note: 'Dead Insured Persons who met the requirements to receive a Retirement or Invalidation Pension.

Table 3.19
Survivors' Grants Awarded to Beneficiaries by
Age Group, Sex and Mean Annual Payment,
2014 - 2018

Age Group	Year				
	2014	2015	2016	2017r	2018p
Total	320	318	337	312	340
<20	205	196	192	188	198
20 - 29	17	26	24	21	34
30 - 39	34	34	36	31	34
40 - 49	30	23	39	38	38
50 - 59	26	19	33	25	28
60+	8	20	13	9	8
Male	118	121	124	118	113
<20	104	107	102	97	109
20 - 29	1	4	4	3	3
30 - 39	2	2	7	5	0
40 - 49	5	2	5	8	0
50 - 59	3	4	4	4	0
60+	3	2	2	1	1
Female	202	197	213	194	227
<20	101	89	90	91	89
20 - 29	16	22	20	18	31
30 - 39	32	32	29	26	34
40 - 49	25	21	34	30	38
50 - 59	23	15	29	21	28
60+	5	18	11	8	7
Mean Annual Payment (BZ\$)	\$4,277	\$5,403	\$6,671	\$5,637	\$6,005

Source: Social Security Board

Note: Mean annual payment refers to the average cost per allowed claim.

Table 3.20
Disablement Pensions Awarded During the Year by Degree of Disability
in Percent, Sex and Mean Annual Payment,
2014 - 2018

Degree of Disability (%)	Year				
	2014	2015	2016	2017r	2018p
Total	10	17	15	13	14
25.00 - 29.99	3	5	3	1	3
30.00 - 39.99	3	8	6	6	4
40.00 - 49.99	2	1	2	2	4
50.00 - 59.99	0	1	1	1	0
60+	2	2	3	3	3
Male	10	17	13	13	14
25.00 - 29.99	3	5	3	1	3
30.00 - 39.99	3	8	6	6	4
40.00 - 49.99	2	1	2	2	4
50.00 - 59.99	0	1	0	1	0
60+	2	2	2	3	3
Female	0	0	2	0	0
25.00 - 29.99	0	0	0	0	0
30.00 - 39.99	0	0	0	0	0
40.00 - 49.99	0	0	0	0	0
50.00 - 59.99	0	0	1	0	0
60+	0	0	1	0	0
Mean Annual Payment (BZ\$)	\$3,618	\$2,802	\$3,895	\$3,783	\$3,565

Source: Social Security Board

Note: Mean annual payment refers to the average annual cost per allowed claim.

Table 3.21
¹Disablement Pensions at Year End by Selected Characteristics,
2014 - 2018

Age Group	Year				
	2014	2015	2016	2017r	2018p
Total	459	465	469	472	478
< 20	3	2	0	0	0
20 - 29	26	31	27	30	23
30 - 39	63	69	64	54	62
40 - 49	122	117	107	107	102
50 - 59	126	125	138	143	136
60+	119	121	133	138	155
Male	432	438	440	443	451
< 20	3	2	0	0	0
20 - 29	25	30	27	30	23
30 - 39	60	66	59	50	58
40 - 49	118	114	104	104	100
50 - 59	116	115	128	132	128
60+	110	111	122	127	142
Female	27	27	29	29	27
< 20	0	0	0	0	0
20 - 29	1	1	0	0	0
30 - 39	3	3	5	4	4
40 - 49	4	3	3	3	2
50 - 59	10	10	10	11	8
60+	9	10	11	11	13
Mean Annual Payment (BZ\$)	\$2,943	\$2,942	\$3,128	\$3,783	\$3,131

Source: Social Security Board

Notes: Mean annual payment refers to the average annual cost per allowed claim.

¹Includes all persons classified as having a work disability that are in receipt of a Social Security Income.

Table 3.22
Disablement Grants Awarded by Degree of Disability in Percent,
Sex and Mean Annual Payment,
2014 - 2018

Degree of Disability (%)	Year				
	2014	2015	2016	2017r	2018p
Total	133	107	139	104	103
00.00 - 04.99	57	44	72	43	49
05.00 - 09.99	39	34	43	33	34
10.00 - 14.99	22	16	13	21	6
15.00 - 19.99	12	10	6	3	10
20.00 - 24.99	3	3	5	4	4
Male	121	100	127	97	92
00.00 - 04.99	53	41	65	39	46
05.00 - 09.99	35	31	40	30	29
10.00 - 14.99	19	15	11	21	4
15.00 - 19.99	11	10	6	3	9
20.00 - 24.99	3	3	5	4	4
Female	12	7	12	7	11
00.00 - 04.99	4	3	2	4	3
05.00 - 09.99	4	3	8	3	5
10.00 - 14.99	3	1	2	0	2
15.00 - 19.99	1	0	0	0	1
20.00 - 24.99	0	0	0	0	0
Mean Annual Payment (BZ\$)	\$4,173	\$4,547	\$3,703	\$4,048	\$4,035

Source: Social Security Board

Note: Mean annual payment refers to the average cost per allowed claim.

Table 3.23
Survivors' Benefit Awarded to Children for Death Benefit
During the Year by Sex and Mean Annual Payment,
(Death due to Employment Injury)
2014 - 2018

Selected Characteristics	Year				
	2014	2015	2016	2017r	2018p
Sex					
Total	15	18	7	19	12
Male	7	11	3	13	7
Female	8	7	4	6	5
Mean Annual Payment (BZ\$)	\$2,106	\$1,993	\$1,718	\$2,312	\$1,911

Source: Social Security Board

Note: Mean annual payment refers to the average annual cost per allowed claim.

Table 3.24
'Survivors' Benefit at Year End for Children Receiving Death Benefit
by Age Group, Sex and Mean Annual Payment,
(Death due to Employment Injury)
2014 - 2018

Age Group	Year				
	2014	2015	2016	2017r	2018p
Total	206	191	181	174	164
00 - 04	8	7	6	7	8
05 - 09	25	27	25	27	24
10 - 14	76	72	64	66	53
15 - 16	40	39	33	31	42
17 - 21	46	32	39	29	30
22+	11	14	14	14	7
Male	109	99	98	87	87
00 - 04	5	4	3	4	6
05 - 09	12	16	16	19	16
10 - 14	38	36	31	35	27
15 - 16	21	18	18	13	22
17 - 21	26	19	24	11	14
22+	7	6	6	5	2
Female	97	92	83	87	77
00 - 04	3	3	3	3	2
05 - 09	13	11	9	8	8
10 - 14	38	36	33	31	26
15 - 16	19	21	15	18	20
17 - 21	20	13	15	18	16
22+	4	8	8	9	5
Mean Annual Payment (BZ\$)	\$1,885	\$1,945	\$2,034	\$2,100	\$2,122

Source: Social Security Board

Notes: Mean annual payment refers to the average annual cost per allowed claim.

¹Includes all children in receipt of a Social Security Death Benefit.

Table 3.25
'Survivors' Benefit at Year End for Spouses Receiving
Death Benefit by Sex and Mean Annual Payment,
(Death due to Employment Injury)
2014 - 2018

Selected Characteristics	Year				
	2014	2015	2016	2017r	2018p
Sex					
Total	89	86	84	86	86
Male	0	0	0	0	0
Female	89	86	84	86	86
Mean Annual Payment (BZ\$)	\$4,512	\$4,635	\$4,743	\$4,864	\$4,915

Source: Social Security Board

Notes: Mean annual payment refers to the average annual cost per allowed claim.

¹Includes all persons classified as spouses receiving a Social Security Death Benefit.

Table 3.26
Employment Injury by Cause and Nature of Injury,
2014 - 2018

Selected Characteristics	Year				
	2014	2015	2016	2017r	2018p
Total	1,888	1,922	1,842	1,783	1,746
Cause					
Other Accidents Including Late Effects	1,234	1,247	1,286	1,235	1,132
Accidental Falls	495	516	399	415	463
Transport Accidents	102	111	86	99	110
Accidents Caused by Fire or Flames	24	14	18	15	14
Accidental Poisoning	9	10	6	2	8
Other Violence	6	12	25	3	6
Homicide and Injury Purposefully Inflicted by Other Persons	1	2	4	1	3
Misadventures During Medical Care	0	2	1	1	2
Injury Undetermined Whether Accidentally or Purposefully Inflicted	0	0	0	6	1
Drugs, Medicaments Causing Adverse Effects	0	0	1	0	0
Missing Codes	17	8	16	6	7
Nature of Injury					
Open Wounds and Injury to Blood Vessels	619	552	669	699	612
Other Injuries, Early Complications of Trauma	525	585	482	369	430
Dislocations, Sprains and Strains	331	398	288	346	339
Fractures	143	150	165	163	154
Foreign Bodies Entering Orifice	84	88	85	62	59
Late Effects of Injuries, Poisoning, Toxic Effects and Other External Causes	54	47	34	35	51
Burns	57	38	47	39	47
Concussion	0	0	0	47	33
Poisoning and Toxic Effects	2	4	6	4	8
Intercranial and Internal injuries, Including Nerves	67	56	61	13	7
Complications of Medical and Surgical Care	1	0	0	5	0
Missing Codes	5	4	5	1	6

Source: Social Security Board

Table 3.27
Employment Injury by Industry,
2014 - 2018

Industry	Year				
	2014	2015	2016	2017r	2018p
Total	1,888	1,922	1,842	1,783	1,746
Agriculture	596	583	475	446	373
Construction	294	264	298	291	301
Manufacturing	204	235	236	251	246
Wholesale and Retail Trade; Repair of Motor Vehicles and Motorcycles	146	157	203	151	174
Public Administration and Defence; Compulsory Social Security	126	134	123	127	148
Accommodation and Food Service Activities	154	160	150	166	147
Transportation and Storage	51	45	63	67	53
Administrative and Support Service Activities	42	52	36	32	42
Education	22	27	16	20	33
Professional, Scientific and Technical Activities	13	22	28	32	32
Human Health and Social Work Activities	41	27	36	32	26
Water Supply; Sewerage, Waste Management and Remediation Activities	29	17	23	22	25
Activities of Households as Employers; Undifferentiated Goods & Service Producing Activities of Households for Own Use	19	29	19	23	24
Forestry and Logging	6	13	19	17	21
Fishing and Aquaculture	54	60	28	22	19
Information and Communication	10	9	22	17	19
Mining and Quarrying	15	12	10	10	16
Other Service Activities	9	17	14	13	15
Electricity, Gas, Steam and Air Condition Supply	17	18	6	6	9
Financial and Insurance Activities	6	4	6	5	8
Real Estate Activities	5	12	15	14	7
Arts, Entertainment and Recreation	26	20	14	15	5
Activities of Extra-Territorial Organizations and Bodies	2	5	1	4	3
Do Not Know or Not Stated	1	0	1	0	0

Source: Social Security Board

Note: Classification of Industry as per International Standard Industrial Classification of Economic Activities Revision 4.

Table 3.28
Number of Non-Contributory Pensioners at Year End by District and Sex,
2014 - 2018

District	Year				
	2014	2015	2016	2017r	2018p
Total	2,777	2,513	2,214	2,018	1,863
Corozal	426	381	324	303	283
Orange Walk	583	530	489	463	439
Belize City	518	448	373	324	278
Cayo	646	585	517	467	440
Stann Creek	284	261	228	198	179
Toledo	320	308	283	263	244
Female	1,828	1,646	1,461	1,347	1,239
Corozal	258	236	197	182	171
Orange Walk	363	330	308	292	277
Belize City	374	318	268	241	205
Cayo	438	393	351	318	301
Stann Creek	192	178	161	147	132
Toledo	203	191	176	167	153
Male	949	867	753	671	624
Corozal	168	145	127	121	112
Orange Walk	220	200	181	171	162
Belize City	144	130	105	83	73
Cayo	208	192	166	149	139
Stann Creek	92	83	67	51	47
Toledo	117	117	107	96	91

Source: Social Security Board

Note: Figures above represent the Number of Recipients that received at least one payment in reference year.

Table 3.29
Total Expenditure, Non-Contributory Pensioners by Branch,
2014 - 2018
(BZ\$)

Branch	Year				
	2014	2015	2016	2017r	2018p
Total	\$3,006,100	\$2,721,600	\$2,494,000	\$2,274,300	\$2,062,200
Belize City	\$521,300	\$464,000	\$401,500	\$341,200	\$289,500
Belmopan	\$232,800	\$219,800	\$207,800	\$195,700	\$182,300
Corozal	\$463,600	\$408,000	\$371,300	\$337,900	\$302,700
Dangriga	\$193,100	\$167,900	\$156,200	\$139,500	\$127,700
Independence	\$118,900	\$100,700	\$92,500	\$79,600	\$65,700
Orange Walk	\$634,500	\$593,100	\$563,000	\$533,600	\$496,000
Punta Gorda	\$362,600	\$342,100	\$323,300	\$302,200	\$277,800
San Pedro	\$14,300	\$10,800	\$8,400	\$6,300	\$5,100
Santa Elena	\$465,000	\$415,200	\$370,000	\$338,300	\$315,400

Source: Social Security Board

Note: NCP Expenditure includes total payment made for all approved NCP recipients during January - December in reference year.

Table 3.30
Number of Non-Contributory Pensioners by Age Group, Year and District,
2014 - 2018

Age Group & Year	District						Total
	Corozal	Orange Walk	Belize	Cayo	Stann Creek	Toledo	
2014							
Total	426	583	518	646	284	320	2,777
65 - 69	9	24	17	23	14	15	102
70 - 74	85	121	78	110	43	57	494
75 - 79	132	161	145	157	89	98	782
80 - 84	83	134	127	159	76	84	663
85 - 89	71	101	86	128	38	43	467
90 - 94	32	30	44	50	22	15	193
95 - 99	12	11	15	16	1	5	60
100 & Over	2	1	6	3	1	3	16
2015							
Total	381	530	448	585	261	308	2,513
65 - 69	9	24	12	20	14	15	94
70 - 74	60	87	52	91	38	50	378
75 - 79	130	157	117	139	71	91	705
80 - 84	82	121	128	145	78	79	633
85 - 89	66	95	77	122	41	49	450
90 - 94	21	33	41	50	14	16	175
95 - 99	9	11	15	15	4	7	61
100 & Over	4	2	6	3	1	1	17
2016							
Total	324	489	373	517	228	283	2,214
65 - 69	7	22	10	15	11	16	81
70 - 74	40	70	35	68	28	41	282
75 - 79	117	150	93	127	64	81	632
80 - 84	79	110	107	130	80	76	582
85 - 89	59	95	81	111	34	47	427
90 - 94	14	34	31	50	8	16	153
95 - 99	5	8	13	13	3	5	47
100 & Over	3	0	3	3	0	1	10
2017r							
Total	303	463	324	467	198	263	2,018
65 - 69	6	13	7	11	6	9	52
70 - 74	29	54	26	43	24	30	206
75 - 79	99	153	80	125	55	70	582
80 - 84	86	108	93	125	72	81	565
85 - 89	59	85	71	104	30	51	400
90 - 94	19	42	32	43	9	15	160
95 - 99	3	8	13	15	2	6	47
100 & Over	2	0	2	1	0	1	6
2018p							
Total	283	439	278	440	179	244	1,863
65 - 69	7	14	4	8	4	4	41
70 - 74	22	45	22	38	22	29	178
75 - 79	92	125	60	104	49	58	488
80 - 84	77	123	82	122	64	80	548
85 - 89	55	80	58	98	27	48	366
90 - 94	22	41	37	57	11	17	185
95 - 99	5	10	13	12	2	7	49
100 & Over	3	1	2	1	0	1	8

Source: Social Security Board

Table 3.31
Appeals Heard by an Appeal Tribunal by Branch Office, Benefit
and Outcome of Appeal,
2014 - 2018

Selected Characteristics	Year				
	2014	2015	2016	2017r	2018p
Branch Office	45	46	39	44	48
Corozal	4	5	8	10	10
Orange Walk	1	0	1	2	1
Belize	20	21	16	19	21
San Pedro	6	0	2	3	1
Belmopan	9	9	4	5	3
Santa Elena	3	5	5	1	5
Dangriga	1	1	1	1	0
Independence	1	1	1	2	4
Punta Gorda	0	4	1	1	3
Benefit	45	46	39	44	48
Short Term	11	17	12	12	20
Sickness	6	12	8	6	14
Maternity Allowance	5	2	4	3	6
Maternity Grant	0	3	0	3	0
Long Term	17	17	14	21	16
Retirement	3	2	1	3	3
Survivors	4	5	10	14	5
Invalidity	8	10	3	4	7
Funeral Grant (NC)	2	0	0	0	1
Employment Injury	16	12	13	11	12
Injury	9	8	8	6	7
Disablement	7	4	5	5	5
Death Benefit	0	0	0	0	0
Funeral Grant (EI)	0	0	0	0	0
Other	1	0	0	0	0
Refund of Contributions	1	0	0	0	0
Outcome of Appeal	45	46	39	44	48
Ruling for SSB	31	32	26	23	31
Ruling for Appellant	14	12	11	16	15
Cases Pending/adjourned	0	2	1	2	1
Abandoned/Withdrawn	0	0	1	3	1

Source: Social Security Board

INVESTMENTS

This section presents data on investments, investment income, investment per capita, inflation rate, and rates of return on investments. The main source of data is the Social Security Board's Investment Services databases and also audited financials. The only exceptions are the data on inflation rate and on population which were gotten from the SIB.

Investments made by SSB play a major role in sustaining and developing Belize's economy. SSB investments are made across the spectrum of Belize's economic sectors and are based on the type of economic activity carried out by the investment recipient. These economic sectors include: Banking, Agriculture, Education, Housing, Utilities, Tourism, Financial Institutions, and Other. SSB generates revenue from contributions made by the insured persons. Contributions collected are used to meet operating expenses and to pay out benefits expenditure; any surplus is invested as per stipulation and guidelines of the Act.

In this section, investment data are presented yearly and cumulatively. Investments are the total investments made in a particular year while the total investment as at December 31 is the increase in the investment by successive yearly additions.

Table 4.1
Investment Portfolio Allocations by Sector as at December 31,
2014 - 2018
(BZ\$)

SECTOR	Year									
	2014		2015		2016		2017r		2018p	
	Quantity	%	Quantity	%	Quantity	%	Quantity	%	Quantity	%
Total	\$410,154,498	100.0	\$440,260,035	100.0	\$424,983,429	100.0	\$444,127,113	100.0	\$456,447,173	100.0
Utilities	\$214,119,277	52.2	\$214,899,892	48.8	\$195,192,834	45.9	\$247,727,910	55.8	\$256,138,490	56.1
Financial Institutions	\$134,638,143	32.8	\$148,964,089	33.8	\$148,511,025	34.9	\$117,186,239	26.4	\$128,264,867	28.1
Agriculture	\$34,232,744	8.3	\$43,169,590	9.8	\$40,445,773	9.5	\$42,032,312	9.5	\$36,607,300	8.0
Tourism	\$11,340,542	2.8	\$18,411,729	4.2	\$26,496,700	6.2	\$24,433,046	5.5	\$25,729,003	5.6
Housing	\$10,712,589	2.6	\$10,049,055	2.3	\$9,313,406	2.2	\$8,689,485	2.0	\$8,601,194	1.9
Education	\$1,681,357	0.4	\$1,484,744	0.3	\$1,193,650	0.3	\$929,866	0.2	\$750,397	0.2
Other	\$8,452,348	2.1	\$8,019,099	1.8	\$8,047,540	1.9	\$7,646,947	1.7	\$5,544,427	1.2
Less Provision for Loss on Investment	(\$5,022,500)	(1.2)	(\$4,738,164)	(1.1)	(\$4,217,499)	(1.0)	(\$4,518,692)	(1.0)	(\$5,188,505)	(1.2)

Source: Social Security Board

Note: Total Investment may not add up due to rounding. Decrease in Investment 2016 relates to a restatement of SSB's financial statement.

Table 4.2
Investment Indicators,
2014 - 2018

Indicators	Year				
	2014	2015	2016	2017r	2018p
Population Estimate	358,899	368,310	377,969	385,766	395,882
Investment (BZ\$)	\$410,154,498	\$440,260,035	\$424,983,429	\$444,127,113	\$456,447,173
Increase in Investments (BZ\$)	\$24,769,729	\$30,105,537	(\$15,276,606)	\$19,143,684	\$12,320,060
Net Investment Income (BZ\$)	\$26,186,332	\$24,791,972	\$26,268,696	\$23,888,586	\$20,453,617
Investment Per Capita (BZ\$)	\$69.02	\$81.74	(\$40.42)	\$49.63	\$31.12
Investment Income Per Capita (BZ\$)	\$72.96	\$67.31	\$69.50	\$61.93	\$51.67
Inflation Rate	1.2	(0.9)	0.7	1.1	0.3
Nominal Rate of Return on Investments in Percent	6.8	6.0	6.3	5.7	4.6
Real Rate of Return on Investments in Percent	5.5	7.0	5.5	4.5	4.3

Source: Social Security Board and Statistical Institute of Belize

Note: Decrease in Investment 2016 relates to a restatement of SSB's financial statement

SELF-EMPLOYED PERSONS

This section presents statistics on Self-Employed persons in Belize. Indicators include registration, contribution and benefit payments of the self-employed. The principal source of the data is the Social Security Board's (SSB) Registration, Benefit and Contribution databases.

In SSB's pursuit of its goal to help promote the extension of social security coverage in line with the objectives and strategies of SSB and the International Social Security Association (ISSA), SSB has included a new section to its Statistical Abstract, namely, Social Security data on the number of self-employed.

In February 2003, SSB implemented the self-employment scheme under which self-employed persons may voluntarily contribute to the Social Security Fund. SSB defines a self-employed as someone who is gainfully occupied in employment in Belize, is not an employed person, and is between ages eighteen to sixty years. Self-employed insured persons are responsible for their entire payment of 7% of their declared weekly income ranging from \$55.00 to \$320.00. For a self-employed to qualify for any benefit, no less than 26 contributions need to be paid into the self-employed scheme and all other qualifying conditions for any benefit under the SSB Regulations need to be met.

Table 5.1
Self-Employed by Selected Characteristics,
2014 - 2018

Selected Characteristics	Year				
	2014	2015	2016	2017r	2018p
Number of Persons in Labour Force	151,317	153,689	162,254	164,935	172,086
Number of Self Employed Persons in the Labour Force	31,364	31,169	39,026	39,160	43,403
Newly Registered	403	404	521	451	515
Number of Active Insured Self Employed Persons	1,094	1,195	1,390	1,460	1,556
Contributions Paid (BZ\$)	\$495,641	\$573,775	\$667,280	\$747,772	\$828,256
% of Self Employed in the Labour Force	0.7%	0.8%	0.9%	0.9%	0.9%
% of Self Employed in the Employed Force	3.5%	3.8%	3.6%	3.7%	3.6%

Source: Social Security Board

Note: N/A - Not Available

Table 5.2
Newly Registered Self-Employed by District,
2014 - 2018

District	Year				
	2014	2015	2016	2017r	2018p
Total	403	404	521	451	515
Corozal	30	38	53	32	42
Orange Walk	44	42	59	54	54
Belize	138	146	171	174	196
Cayo	92	80	98	93	89
Stann Creek	75	68	84	79	103
Toledo	24	30	56	19	31

Source: Social Security Board

Table 5.3
Active Insured Self-Employed by Selected Characteristics,
2014 - 2018

Selected Characteristics	Year				
	2014	2015	2016	2017r	2018p
Total	1,094	1,195	1,390	1,460	1,556
District					
Corozal	131	127	147	159	184
Orange Walk	130	145	169	183	191
Belize	285	335	394	431	461
Cayo	256	274	304	305	323
Stann Creek	206	227	268	250	277
Toledo	86	87	108	132	120
Age Group					
18 - 19	2	3	4	2	3
20 - 24	39	37	34	31	27
25 - 29	61	75	106	89	88
30 - 34	122	125	155	151	167
35 - 39	130	157	163	165	177
40 - 44	159	173	213	221	224
45 - 49	165	191	208	208	242
50 - 54	202	207	241	288	284
55 - 59	187	198	231	258	298
60	27	29	35	47	46
Marital Status					
Married	523	589	679	717	755
Single	359	356	398	398	431
Divorced	9	13	15	16	14
Common Law	178	201	258	291	315
Widow	16	25	25	25	24
Legally Separated	9	11	15	13	17

Source: Social Security Board

Table 5.4
Male Active Insured Self-Employed by Selected Characteristics,
2014 - 2018

Selected Characteristics	Year				
	2014	2015	2016	2017r	2018p
Total	518	557	640	651	685
District					
Corozal	85	69	76	77	84
Orange Walk	76	89	101	96	98
Belize	116	141	160	174	183
Cayo	109	126	139	143	148
Stann Creek	90	98	113	108	118
Toledo	42	34	51	53	54
Age Group					
18 - 19	2	1	3	1	1
20 - 24	18	19	16	15	12
25 - 29	24	37	43	36	37
30 - 34	61	61	81	73	70
35 - 39	59	77	80	83	92
40 - 44	84	84	92	95	95
45 - 49	75	88	95	97	109
50 - 54	91	93	114	115	117
55 - 59	90	81	100	114	136
60	14	16	16	22	16
Marital Status					
Married	252	288	334	332	341
Single	159	147	167	159	162
Divorced	1	2	2	3	3
Common Law	98	111	128	150	172
Widow	4	4	3	3	2
Legally Separated	4	5	6	4	5

Source: Social Security Board

Table 5.5
Female Active Insured Self-Employed by Selected Characteristics,
2014 - 2018

District	Year				
	2014	2015	2016	2017r	2018p
Total	576	638	750	809	871
District					
Corozal	46	58	71	82	100
Orange Walk	54	56	68	87	93
Belize	169	194	234	257	278
Cayo	147	148	165	162	175
Stann Creek	116	129	155	142	159
Toledo	44	53	57	79	66
Age Group					
18 - 19	0	2	1	1	2
20 - 24	21	18	18	16	15
25 - 29	37	38	63	53	51
30 - 34	61	64	74	78	97
35 - 39	71	80	83	82	85
40 - 44	75	89	121	126	129
45 - 49	90	103	113	111	133
50 - 54	111	114	127	173	167
55 - 59	97	117	131	144	162
60	13	13	19	25	30
Marital Status					
Married	271	301	345	385	414
Single	200	209	231	239	269
Divorced	8	11	13	13	11
Common Law	80	90	130	141	143
Widow	12	21	22	22	22
Legally Separated	5	6	9	9	12

Source: Social Security Board

Table 5.6
Self-Employed Contributions Collected and their Percentage Distribution by Average Weekly Insurable Earnings,
2014 - 2018
(BZS)

District	Year									
	2014		2015		2016		2017r		2018p	
	Quantity	%	Quantity	%	Quantity	%	Quantity	%	Quantity	%
Total	\$495,641	100.0	\$573,775	100.0	\$667,280	100.0	\$747,772	100.0	\$828,256	100.0
Under \$70.00	\$17,636	3.6	\$19,376	3.4	\$20,013	3.0	\$20,265	2.7	\$20,463	2.5
\$70.00 - \$109.99	\$66,279	13.4	\$67,619	11.8	\$70,583	10.6	\$71,634	9.6	\$71,772	8.7
\$110.00 - \$139.99	\$9,288	1.9	\$9,205	1.6	\$10,880	1.6	\$14,475	1.9	\$18,174	2.2
\$140.00 - \$179.99	\$61,597	12.4	\$72,226	12.6	\$77,103	11.6	\$87,277	11.7	\$93,298	11.3
\$180.00 - \$219.99	\$109,444	22.1	\$132,036	23.0	\$169,557	25.4	\$193,180	25.8	\$211,788	25.6
\$220.00 - \$259.99	\$20,647	4.2	\$27,301	4.8	\$34,980	5.2	\$36,683	4.9	\$51,193	6.2
\$260.00 - \$299.99	\$10,745	2.2	\$16,340	2.8	\$18,094	2.7	\$21,806	2.9	\$21,352	2.6
\$300.00 and Over	\$200,004	40.4	\$229,673	40.0	\$266,070	39.9	\$302,452	40.4	\$340,216	41.1

Source: Social Security Board

Table 5.7
Number of Benefits Awarded to Self-Employed Insured Persons
During the Year by Branch/Benefit,
2014 - 2018

Branch/Benefit	Year				
	2014	2015	2016	2017r	2018p
Total	201	222	264	318	308
Short Term	158	178	210	244	233
Sickness	137	162	191	214	208
Maternity Allowance	9	9	7	13	12
Maternity Grant	12	7	12	17	13
Long Term	31	38	42	58	60
Retirement	31	33	39	48	49
Survivors	0	0	0	5	5
Invalidity	0	3	3	1	1
Funeral Grant (NC)	0	2	0	4	5
Non-Contributory Pensions	0	0	0	0	0
Employment Injury	12	6	12	16	15
Injury Benefit	12	4	11	15	15
Disablement Grant	0	1	0	1	0
Death	0	1	1	0	0
Funeral Grant (EI)	0	0	0	0	0

Source: Social Security Board

Notes: NC - Natural Causes.

EI - Employment Injury

Table 5.8
Benefits Expenditure Paid to Self-Employed Insured Persons by Branch/Benefit,
2014 - 2018
(BZ\$)

Branch/Benefit	Year				
	2014	2015	2016	2017r	2018p
Total	\$821,974	\$990,254	\$1,179,812	\$1,489,886	\$1,641,735
Short Term	\$93,030	\$100,643	\$80,164	\$108,308	\$93,544
Sickness	\$70,637	\$81,597	\$61,444	\$76,957	\$66,128
Maternity Allowance	\$18,794	\$16,946	\$15,120	\$26,251	\$23,516
Maternity Grant	\$3,600	\$2,100	\$3,600	\$5,100	\$3,900
Long Term	\$686,121	\$837,059	\$1,042,514	\$1,307,026	\$1,471,932
Retirement	\$597,663	\$726,672	\$902,634	\$1,128,117	\$1,332,965
Survivors	\$43,944	\$61,385	\$87,980	\$117,036	\$84,122
Invalidity	\$44,513	\$47,002	\$51,900	\$57,873	\$47,345
Funeral Grant (NC)	\$0	\$2,000	\$0	\$4,000	\$7,500
Non-Contributory Pensions	\$0	\$0	\$0	\$0	\$0
Employment Injury	\$42,823	\$52,552	\$57,134	\$74,552	\$76,259
Injury Benefit	\$13,786	\$4,929	\$9,022	\$16,829	\$10,974
Disablement Grant	\$29,037	\$32,903	\$34,503	\$42,559	\$43,523
Death	\$0	\$14,720	\$13,608	\$15,163	\$21,762
Funeral Grant (EI)	\$0	\$0	\$0	\$0	\$0

Source: Social Security Board
Notes: NC - Natural Causes.
EI - Employment Injury

Table 5.9
Ratio of Sickness Benefit Cases Paid to Active Insured Persons by Selected Characteristics,
2014 - 2018

Contributors	Year				
	2014	2015	2016	2017r	2018p
Total Active Insured Persons (AIP)					
No. of Sickness Cases Paid	28,973	30,928	38,139	39,546	33,011
No. of AIP	98,841	102,407	104,198	105,698	108,269
No. of Sickness Cases Paid/No. of AIP	0.29	0.30	0.37	0.37	0.30
Self-Employed (SE)					
No. of Sickness Cases Paid	137	162	221	214	208
No. of SE Contributors	1,094	1,195	1,390	1,460	1,556
No. of Sickness Cases Paid/No. of SE Contributors	0.13	0.14	0.16	0.15	0.13
Other Contributors					
No. of Sickness Cases Paid	28,836	30,766	37,918	39,332	32,803
No. of Other Contributors	97,747	101,212	102,808	104,238	106,713
No. of Sickness Cases Paid/No. of Other Contributors	0.30	0.30	0.37	0.38	0.31

Source: Social Security Board

MIGRANT WORKERS

This section presents statistics on Migrant Workers in Belize. Indicators include the registration, contribution and benefit payments of migrant workers. The principal source of the data is the Social Security Board's (SSB) Registration, Benefit and Contribution databases.

In response to the high demand for migrant data from key stakeholders like International Organization of Migration (IOM) Belize, Department of Immigration and Nationality Services, Labour Department and Belize Trade and Investment Development Service (Beltraide), SSB has created a section on the number of migrant workers by country of birth, age, sex among other things since 2017. The statistics that are presented in this section were compiled based on the following definition: a migrant worker is someone who is gainfully occupied in employment in Belize who was not born in the country of Belize. Migrant workers who have legal status to reside and work in Belize and are insured persons may contribute to the Fund and receive all Social Security benefits as born Belizeans once they meet the qualifying conditions.

Table 6.1
Migrant Workers by Selected Characteristics,
2014 - 2018

Selected Characteristics	Year				
	2014	2015	2016	2017r	2018p
Total Registered	61,337	64,461	66,840	69,233	71,203
Newly Registered	2,631	3,124	2,379	2,393	1,970
Number of Active Migrant Workers	16,722	17,527	17,507	17,620	17,598
Contributions Paid (BZ\$)	\$11,209,202	\$11,842,264	\$11,879,252	\$12,573,972	\$13,000,277

Source: Social Security Board

Table 6.2
Number of Migrant Workers by Nationality,
2014 - 2018

Nationality	Year				
	2014	2015	2016	2017r	2018p
Total	16,722	17,527	17,507	17,620	17,598
Central America	13,998	14,734	14,530	14,339	14,348
Guatemala	7,682	8,137	8,025	7,904	7,897
Honduras	3,106	3,232	3,155	3,088	3,068
El Salvador	2,848	2,972	2,965	2,969	2,979
Nicaragua	329	355	346	339	370
Costa Rica	17	21	24	24	17
Panama	16	17	15	15	17
North America	1,039	1,084	1,106	1,185	1,139
Mexico	488	515	516	586	557
United States Of America	456	476	493	513	500
Canada	95	93	97	86	82
Bermuda	0	0	0	0	0
Asia	733	733	874	1,040	1,072
India	247	234	251	275	290
China (Mainland)	152	154	258	399	410
Philippines	93	88	98	99	105
Taiwan	67	70	74	86	86
China (Republic of Taiwan)	53	58	57	60	61
Other	121	129	136	121	120
Caribbean	426	445	455	468	478
Jamaica	172	182	173	168	174
Cuba	66	75	78	84	84
Guyana	58	57	60	59	59
Haiti	43	40	45	53	56
Trinidad And Tobago	36	33	36	38	39
Other	51	58	63	66	66
Africa	228	213	205	199	192
Nigeria	164	144	129	122	120
Republic of South Africa	21	29	33	33	29
Ghana	18	15	14	12	13
Zimbabwe	3	4	4	9	7
Cameroon	4	3	4	4	3
Other	18	18	21	19	20
Europe	232	241	246	281	262
United Kingdom	134	129	122	120	111
Germany	21	18	19	45	38
Netherlands (Holland)	4	6	18	14	16
France	9	10	10	9	15
Denmark	8	9	7	8	5
Other	56	69	70	85	77
South America	65	76	90	102	102
Colombia	30	34	40	39	42
Venezuela	6	12	16	26	24
Bolivia	5	6	8	7	7
Brazil	7	6	6	7	7
Ecuador	5	5	6	6	8
Other	12	13	14	17	14
Oceania	0	0	1	6	5
Australia	0	0	0	5	5
Fiji	0	0	1	1	0
Do Not Know or Not Stated	1	1	0	0	0

Source: Social Security Board

Table 6.3
Number of CARICOM Migrant Workers by Sex and Nationality,
2014 - 2018

Sex	Year				
	2014	2015	2016	2017r	2018p
Total CARICOM Migrants	344	351	354	362	371
Jamaica	172	182	173	168	174
Co-operative Republic of Guyana	58	57	60	59	59
Republic of Haiti	43	40	45	53	56
Republic of Trinidad & Tobago	36	33	36	38	39
St. Vincent & the Grenadines	8	9	10	11	8
Dominica	11	11	9	9	11
St. Lucia	2	3	4	5	5
Antigua & Barbuda	2	2	3	4	4
Barbados	1	2	2	4	4
Bahamas	3	5	4	3	3
Grenada	5	4	4	3	4
Federation of St. Kitts & Nevis	2	2	2	3	2
Republic of Suriname	1	1	2	2	2
Male CARICOM Migrants	173	176	178	195	197
Jamaica	81	87	87	89	91
Republic of Haiti	36	34	33	42	45
Co-operative Republic of Guyana	28	29	27	27	28
Republic of Trinidad & Tobago	13	10	11	12	12
St. Vincent & the Grenadines	4	4	5	6	4
Dominica	5	5	5	5	5
Antigua & Barbuda	2	2	3	4	4
Barbados	0	1	2	3	1
St. Lucia	1	1	1	2	2
Grenada	2	2	2	2	3
Bahamas	1	1	1	1	0
Federation of St. Kitts & Nevis	0	0	0	1	1
Republic of Suriname	0	0	1	1	1
Female CARICOM Migrants	171	175	176	167	174
Jamaica	91	95	86	79	83
Co-operative Republic of Guyana	30	28	33	32	31
Republic of Trinidad & Tobago	23	23	25	26	27
Republic of Haiti	7	6	12	11	11
St. Vincent & the Grenadines	4	5	5	5	4
Dominica	6	6	4	4	6
St. Lucia	1	2	3	3	3
Bahamas	2	4	3	2	3
Federation of St. Kitts & Nevis	2	2	2	2	1
Barbados	1	1	0	1	3
Grenada	3	2	2	1	1
Republic of Suriname	1	1	1	1	1
Antigua & Barbuda	0	0	0	0	0

Source: Social Security Board

Table 6.4
Active Insured Migrant Workers by Selected Characteristics,
2014 - 2018

Selected Characteristics	Year				
	2014	2015	2016	2017r	2018p
Total	16,722	17,527	17,507	17,620	17,598
District					
Corozal	882	837	843	791	772
Orange Walk	956	991	1,072	1,137	1,137
Belize	5,483	5,396	5,956	5,862	5,888
Cayo	3,956	4,272	4,298	4,418	4,490
Stann Creek	5,254	5,816	4,538	4,107	4,632
Toledo	191	215	800	1,305	679
Age Group					
14 - 24	2,219	2,318	2,233	2,082	2,015
25 - 34	4,814	4,936	4,859	4,855	4,715
35 - 44	4,659	4,845	4,861	4,852	4,850
45 - 54	3,088	3,347	3,421	3,559	3,649
55+	1,942	2,081	2,133	2,272	2,368
Marital Status					
Single	7,056	7,584	7,426	7,327	7,414
Married	5,739	5,789	5,933	6,210	6,141
Common Law	3,611	3,838	3,824	3,775	3,742
Legally Separated	120	119	116	121	118
Widow	112	112	115	99	95
Divorced	84	85	93	88	88

Source: Social Security Board

Table 6.5
Male Active Insured Migrant Workers by Selected Characteristics,
2014 - 2018

Selected Characteristics	Year				
	2014	2015	2016	2017r	2018p
Total	11,471	12,124	11,991	11,979	11,926
District					
Corozal	639	592	590	549	531
Orange Walk	741	776	819	832	833
Belize	3,229	3,188	3,599	3,478	3,504
Cayo	2,593	2,882	2,885	3,009	3,059
Stann Creek	4,138	4,540	3,527	3,170	3,519
Toledo	131	146	571	941	480
Age Group					
14 - 24	1,602	1,702	1,648	1,528	1,448
25 - 34	3,187	3,315	3,246	3,238	3,148
35 - 44	3,044	3,161	3,114	3,072	3,094
45 - 54	2,127	2,321	2,329	2,401	2,429
55+	1,511	1,625	1,654	1,740	1,807
Marital Status					
Single	4,765	5,205	5,014	4,881	4,893
Married	4,039	4,108	4,184	4,369	4,324
Common Law	2,530	2,668	2,657	2,602	2,587
Legally Separated	60	62	62	57	50
Widow	45	47	42	44	47
Divorced	32	34	32	26	25

Source: Social Security Board

Table 6.6
Female Active Insured Migrant Workers by Selected Characteristics,
2014 - 2018

Selected Characteristics	Year				
	2014	2015	2016	2017r	2018p
Total	5,251	5,403	5,516	5,641	5,672
District					
Corozal	243	245	253	242	241
Orange Walk	215	215	253	305	304
Belize	2,254	2,208	2,357	2,384	2,384
Cayo	1,363	1,390	1,413	1,409	1,431
Stann Creek	1,116	1,276	1,011	937	1,113
Toledo	60	69	229	364	199
Age Group					
14 - 24	617	616	585	554	567
25 - 34	1,627	1,621	1,613	1,617	1,567
35 - 44	1,615	1,684	1,747	1,780	1,756
45 - 54	961	1,026	1,092	1,158	1,220
55+	431	456	479	532	561
Marital Status					
Single	2,291	2,379	2,412	2,446	2,521
Married	1,700	1,681	1,749	1,841	1,817
Common Law	1,081	1,170	1,167	1,173	1,155
Widow	67	65	73	77	71
Divorced	52	51	61	62	63
Legally Separated	60	57	54	42	45

Source: Social Security Board

Table 6.7
Active Insured Migrant Workers and their Percentage Distribution by Industry,
2014 – 2018

Industry	2014		2015		2016		2017r		2018p	
	Quantity	%	Quantity	%	Quantity	%	Quantity	%	Quantity	%
Total Active Insured Migrant Workers	16,722	100.0	17,527	100.0	17,507	100.0	17,620	100.0	17,598	100.0
Agriculture	4,972	29.7	5,297	30.2	4,726	27.0	4,461	25.3	4,454	25.3
Wholesale and Retail Trade; Repair of Motor Vehicles and Motorcycles	1,844	11.0	1,937	11.1	2,190	12.5	2,381	13.5	2,359	13.4
Accommodation and Food Service Activities	1,943	11.6	2,008	11.5	2,099	12.0	2,247	12.8	2,251	12.8
Construction	1,608	9.6	1,658	9.5	1,749	10.0	1,563	8.9	1,577	9.0
Manufacturing	1,212	7.2	1,464	8.4	1,388	7.9	1,332	7.6	1,313	7.5
Professional, Scientific and Technical Activities	484	2.9	464	2.6	687	3.9	711	4.0	826	4.7
Public Administration and Defence; Compulsory Social Security	716	4.3	748	4.3	743	4.2	776	4.4	770	4.4
Activities of Households as Employers; Undifferentiated Goods & Service Producing Activities of Households for Own Use	615	3.7	597	3.4	626	3.6	642	3.6	630	3.6
Administrative and Support Service Activities	578	3.5	588	3.4	545	3.1	578	3.3	592	3.4
Education	517	3.1	504	2.9	527	3.0	542	3.1	540	3.1
Human Health and Social Work Activities	351	2.1	358	2.0	368	2.1	403	2.3	418	2.4
Transportation and Storage	309	1.8	307	1.8	341	1.9	405	2.3	368	2.1
Other Service Activities	277	1.7	294	1.7	286	1.6	282	1.6	283	1.6
Financial and Insurance Activities	175	1.0	183	1.0	218	1.2	220	1.2	235	1.3
Arts, Entertainment and Recreation	249	1.5	244	1.4	233	1.3	231	1.3	212	1.2
Information and Communication	124	0.7	134	0.8	175	1.0	188	1.1	192	1.1
Fishing and Aquaculture	344	2.1	310	1.8	212	1.2	214	1.2	172	1.0
Real Estate Activities	77	0.5	108	0.6	112	0.6	141	0.8	111	0.6
Mining and Quarrying	102	0.6	110	0.6	86	0.5	97	0.6	93	0.5
Water Supply; Sewerage, Waste Management and Remediation Activities	112	0.7	67	0.4	71	0.4	75	0.4	68	0.4
Activities of Extra-Territorial Organizations and Bodies	46	0.3	55	0.3	42	0.2	53	0.3	53	0.3
Electricity, Gas, Steam and Air Condition Supply	29	0.2	33	0.2	40	0.2	41	0.2	36	0.2
Forestry and Logging	29	0.2	50	0.3	39	0.2	33	0.2	34	0.2
Do Not Know or Not Stated	9	0.1	9	0.1	4	0.0	4	0.0	11	0.1

Source: Social Security Board

Notes: The total number of Active Insured Persons shown is not equal to the sum of the Insured Persons in each industry during the respective years due to persons working in different industries during the year.

The sum of the percentages of Insured Persons in each industry does not add up to 100% during the respective years due to persons working in different industries during the year.
Classification of Industry as per International Standard Industrial Classification of Economic Activities Revision 4.

Table 6.8
Active Insured Migrant Workers and their Percentage Distribution by Average Weekly Insurable Earnings,
2014 - 2018

Weekly Earnings Group	Year									
	2014		2015		2016		2017r		2018p	
	Quantity	%	Quantity	%	Quantity	%	Quantity	%	Quantity	%
Total Migrants	16,722	100.0	17,527	100.0	17,507	100.0	17,620	100.0	17,598	100.0
Under \$70.00	997	6.1	901	5.3	750	4.3	777	4.7	731	4.7
\$70.00 - \$109.99	1,383	8.5	1,170	6.8	1,202	6.9	1,000	5.9	994	5.9
\$110.00 - \$139.99	1,382	8.5	1,200	7.0	1,153	6.6	1,033	5.8	1,043	5.8
\$140.00 - \$179.99	2,757	16.9	2,922	17.1	2,708	15.5	2,581	14.2	2,419	14.2
\$180.00 - \$219.99	2,280	14.0	2,372	13.9	2,465	14.1	2,406	13.3	2,332	13.3
\$220.00 - \$259.99	1,682	10.3	1,848	10.8	1,841	10.5	1,906	10.8	1,944	10.8
\$260.00 - \$299.99	952	5.8	1,143	6.7	1,117	6.4	1,168	6.4	1,178	6.4
\$300.00 and Over	4,907	30.0	5,532	32.4	5,835	33.3	6,264	36.1	6,455	36.1
**	382	1.8	439	1.9	436	2.5	485	2.8	502	2.8

Source: Social Security Board

Note: ** Applies to persons age 60 - 64 years who have received a retirement benefit and all persons 65 years and older.

Table 6.9
Number of Benefits Awarded to Migrant Workers During the Year by Branch/Benefit,
2014 - 2018

Branch/Benefit	Year				
	2014	2015	2016	2017r	2018p
Total	5,107	5,336	4,863	5,398	4,352
Short Term	4,348	4,488	4,086	4,681	3,644
Sickness	3,663	3,812	3,429	4,103	3,070
Maternity Allowance	169	170	171	157	165
Maternity Grant	516	506	486	421	409
Long Term	253	336	308	312	338
Retirement	88	125	115	102	157
Survivors	19	24	17	30	28
Invalidity	2	5	9	3	3
Funeral Grant (NC)	132	162	161	177	150
Non-Contributory Pensions	12	20	6	0	0
Employment Injury	506	512	469	405	370
Injury Benefit	501	504	468	399	366
Disablement	4	5	0	5	4
Death	1	2	1	1	0
Funeral Grant (EI)	0	1	0	0	0

Source: Social Security Board

Notes: NC - Natural Causes

EI - Employment Injury

Table 6.10
Benefits Expenditure Paid to Migrant Workers by Branch/Benefit,
2014 - 2018
(BZ\$)

Branch/Benefit	Year				
	2014	2015	2016	2017r	2018p
Total	\$6,689,270	\$7,532,018	\$8,160,235	\$8,999,872	\$9,420,681
Short Term	\$1,604,573	\$1,740,322	\$1,533,942	\$1,680,900	\$1,419,635
Sickness	\$1,054,674	\$1,177,360	\$994,195	\$1,164,709	\$870,768
Maternity Allowance	\$393,900	\$409,061	\$393,047	\$390,491	\$424,967
Maternity Grant	\$156,000	\$153,900	\$146,700	\$125,700	\$123,900
Long Term	\$4,452,201	\$5,110,178	\$5,920,319	\$6,612,856	\$7,305,037
Retirement	\$2,903,901	\$3,534,688	\$4,227,689	\$4,849,618	\$5,509,615
Survivors	\$463,299	\$521,257	\$635,428	\$776,086	\$909,185
Invalidity	\$193,501	\$215,632	\$245,503	\$260,392	\$268,873
Funeral Grant (NC)	\$182,000	\$225,000	\$225,000	\$199,560	\$203,864
Non-Contributory Pensions	\$709,500	\$613,600	\$586,700	\$527,200	\$413,500
Employment Injury	\$632,496	\$681,518	\$705,974	\$706,116	\$696,009
Injury Benefit	\$287,155	\$299,831	\$300,955	\$270,954	\$258,695
Disablement	\$279,269	\$305,706	\$317,671	\$335,655	\$334,672
Death	\$66,072	\$74,481	\$87,347	\$99,507	\$102,643
Funeral Grant (EI)	\$0	\$1,500	\$0	\$0	\$0

Source: Social Security Board

Notes: NC - Natural Causes

EI - Employment Injury

Table 6.11
Ratio of Sickness Benefit Cases Paid to Migrant Workers by Selected Characteristics,
2014 - 2018

Migrant Workers	Year				
	2014	2015	2016	2017r	2018p
No. of Sickness Cases Paid	3,663	3,812	3,429	4,041	3,070
No. of Active Migrant Workers	16,722	17,527	17,507	17,620	17,598
No. of Sickness Cases Paid/No. of Active Migrant Workers	0.22	0.22	0.20	0.23	0.17

Source: Social Security Board



© SOCIAL SECURITY BOARD, 2018